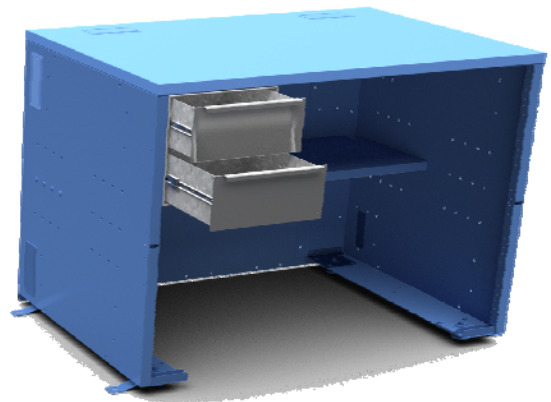
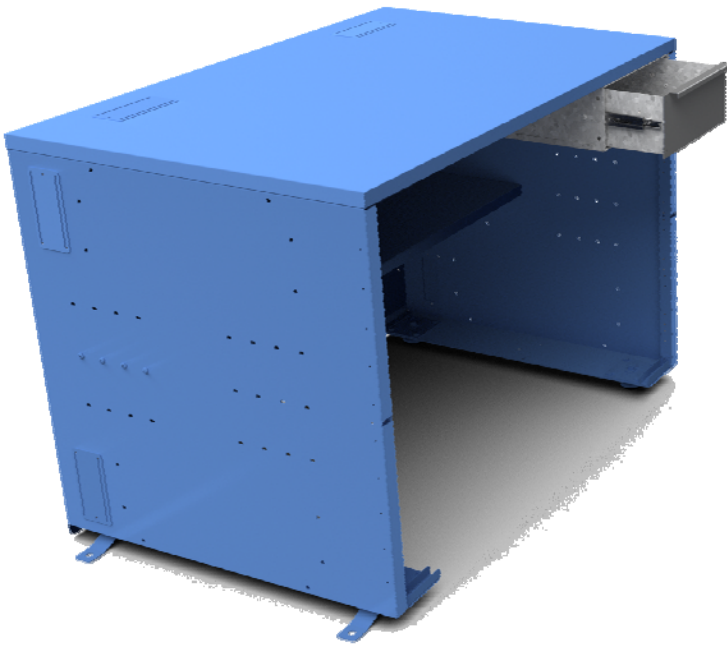


PQS

PRACTICAL QUALITY SYSTEMS
Fast Custom Manufacturing - Nationwide Installation Services

Half Size Drawer PN 60034 & Full Sized Drawer Frame with 2 Half Sized Drawers PN 60035



Half Size Drawer PN 60034 & Full Sized Drawer Frame with 2 Half Sized Drawers PN 60035

Product Specifications:

Half Size Drawer PN 60034

- Installs directly onto pre punched mounting locations below the left, right or center of any *Enclosure* desk top or below any *Work Table* or Shelf.
- Can also be mounted directly below a *Pull Out Work Surface*, a *Full Sized Drawer Frame*, or a *Half Sized Drawer Frame*.
- Features stainless steel drawer fronts with integral handles and a galvanized steel drawer frame assembly.
- All drawers are supported by pairs of heavy duty, ball bearing drawer slides.
- Multiple drawers can be secured with the optional *Multiple Drawer Lock Bar Kit* PN 60090 or single drawers can be secured with the optional *Single Drawer Lock Bar Kit* PN 60092.
- Both lock bars can be secured with any padlock either keyed or combination type.
- The Half Size Drawer (PN 60034) uses a half size drawer and drawer frame.
- The Full Sized Drawer Frame is comprised of two half size drawers stacked into a full size frame.
- Half size Drawer internal dimensions are 10.75"W x 12.55"D x 4.75"H

Engineering Drawing Reference Notes

To view and manipulate 3D models of any assembly; visit www.edrawingsviewer.com and download the free eDrawings viewer software, then open the eDrawing format files (.EASM) found in our *Engineering Drawings* folders.

For more product dimensional specifications; download the *Engineering Drawings* folder for files in DWG, PDF and EASM formats on our website from the tool bar on the individual product pages or from our *Product Resources* page.

User Manual Reference

Refer to manual 10010701-UM for assembly and installation instructions

User Manuals are available for download in PDF format on our website from the tool bar on the individual product pages or from our *Product Resources* page.