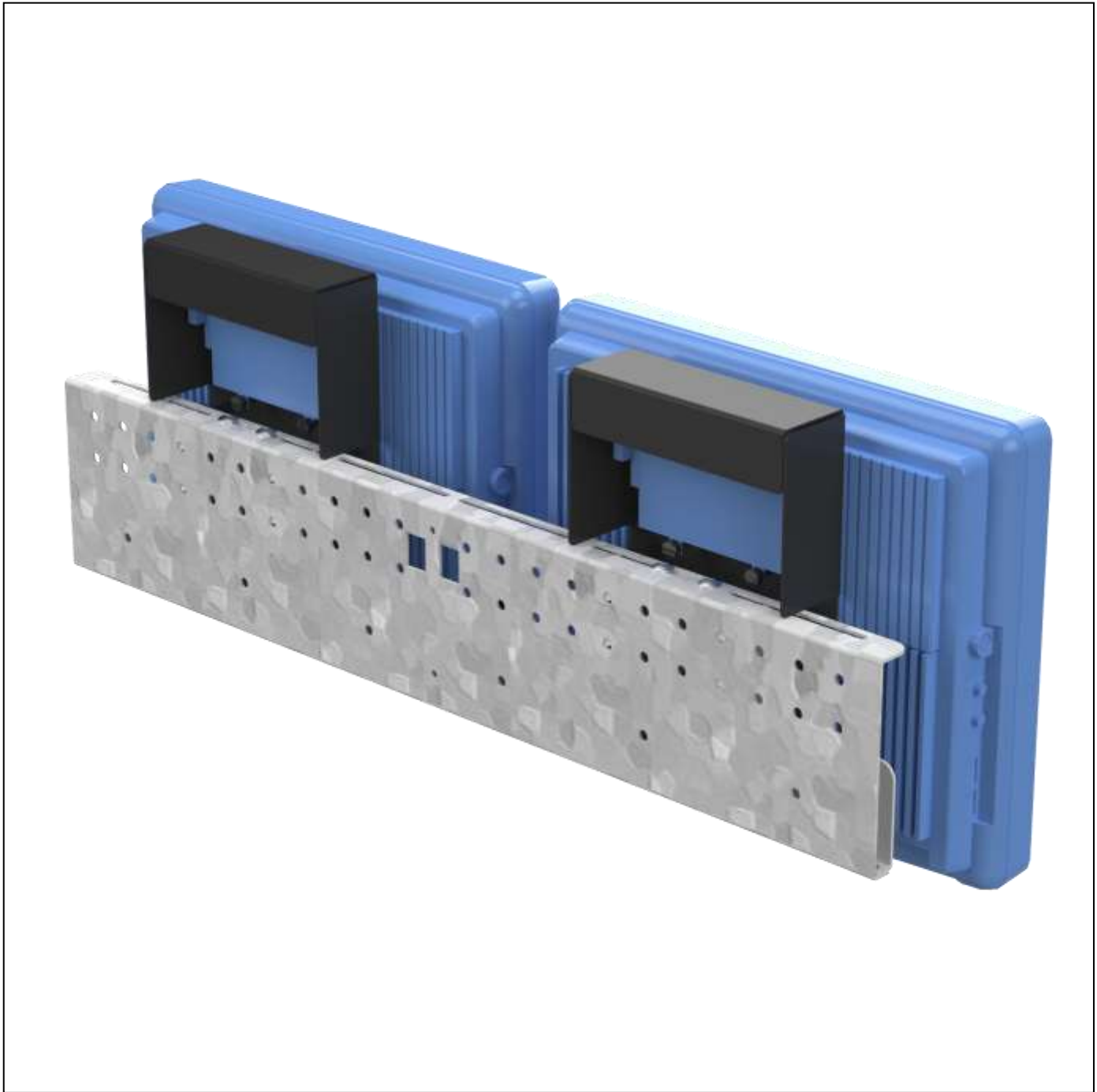


# PQS

PRACTICAL QUALITY SYSTEMS  
*Fast Custom Manufacturing - Nationwide Installation Services*

## Two Screen Flat Wall Mount for POSIFLEX KS6812 PN 80911-400



Note: 80911-400 shown with two POSIFLEX KS6812 touch screen terminals and external SATA hard drives installed.

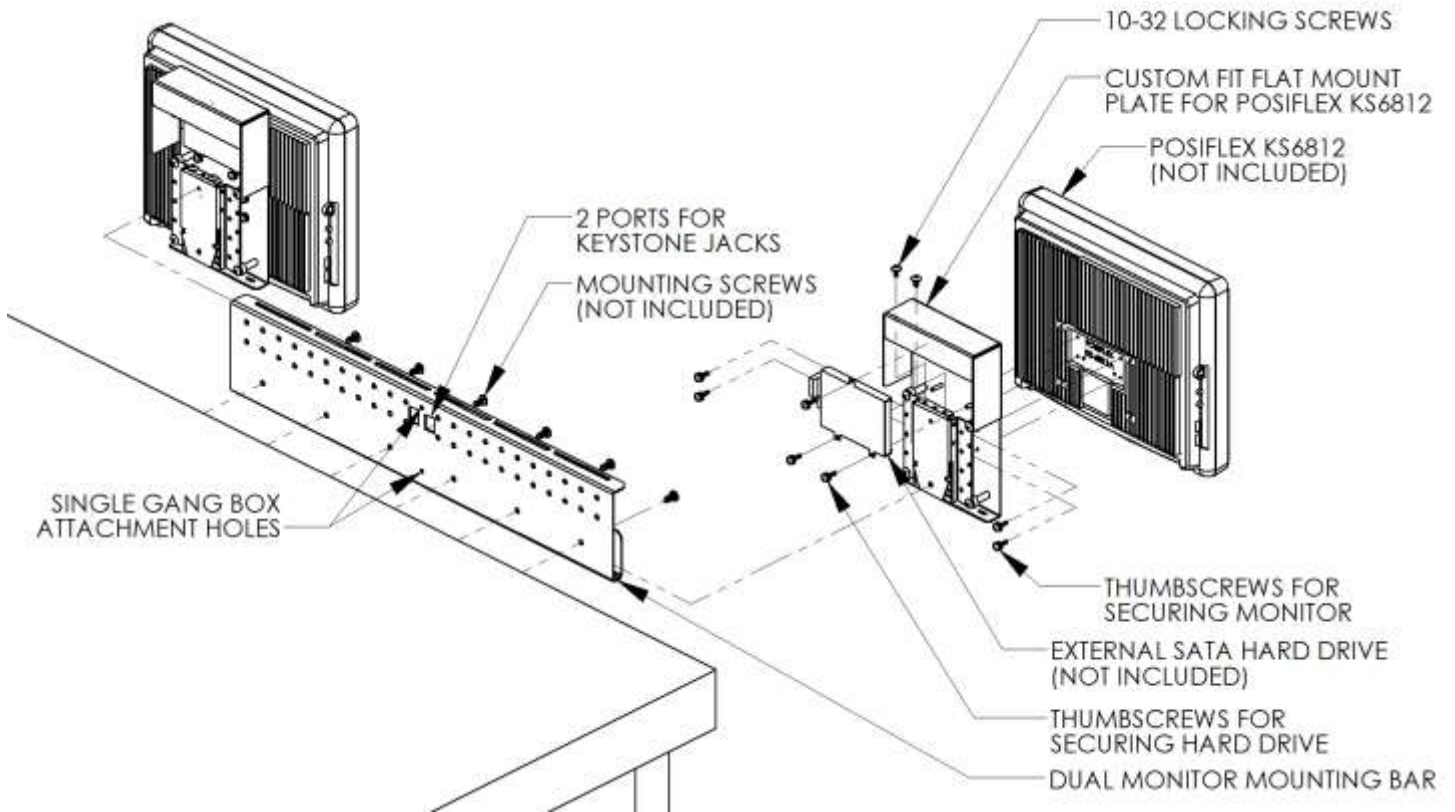
[info@practicalqualitysystems.com](mailto:info@practicalqualitysystems.com)

[WWW.PRACTICALQUALITYSYSTEMS.COM](http://WWW.PRACTICALQUALITYSYSTEMS.COM)

(818) 993-1022

**ALL PRODUCTS PATENT PENDING**

## Two Screen Flat Wall Mount for POSIFLEX KS6812 PN 80911-400



Note: 80911-400 shown with two POSIFLEX KS6812 touch screen terminals and external SATA hard drives installed.

## PRODUCT SPECIFICATIONS

- Supports two POSIFLEX KS6812 touch screen terminals.
- Attaches to a wall or any flat vertical surface.
- The Custom Fit pan and tilt head provides a semi-enclosed mounting location for the POSIFLEX KS6812's external SATA hard drive as well as mounting for other peripheral equipment.
- A single monitor can be positioned anywhere along the length of the mount bar.
- The mount bar's two outer holes are 16" apart to allow for fixing to vertical studs inside walls.
- 10-32 screws secure the monitors in place.
- Mounting bar includes two ports for keystone jacks as well as attachment holes for a single gang box.
- PQS also offers a *Flat Mount Bracket* for single POSIFLEX KS6812 touch screen terminal (see PN 80910-400).
- For assembly instructions see the *User Manual* which can be downloaded from the *Product Resources* page on our website.
- Most of our modular mounting systems can be easily reconfigured in the field for a different application by either adding or removing a few parts to create a support solution for any mounting location.
- Available to support all VESA and NON VESA compatible touch screens, terminals or flat panel monitors. Refer to the *Custom Fit Pan and Tilt Heads* page on our website found in the *Other Products* section for the most current list of options. If we don't have a compatible mount or pan and tilt head; send us a sample of your screen and we'll create a *Custom Fit* solution for you.

### Two Screen Flat Wall Mount for POSIFLEX KS6812 PN 80911-400

#### MOUNTING OPTIONS:

- Using our *Custom Fit* pan and tilt head for POSIFLEX KS 6812 touch screen terminals (PN 80881-400) your POSIFLEX can be mounted onto any of the following mounting systems. They are also available with pan and tilt heads for 75, 100 and 200mm VESA compatible screens as well as *Custom Fit* pan and tilt heads for all other non VESA compatible screens.
- Refer to the *Custom Fit Pan and Tilt Heads* page on our website found in the *Other Products* section for the most current list of options. If we don't have a compatible pan and tilt head send us a sample of your screen and we'll create a *Custom Fit* solution for you.

