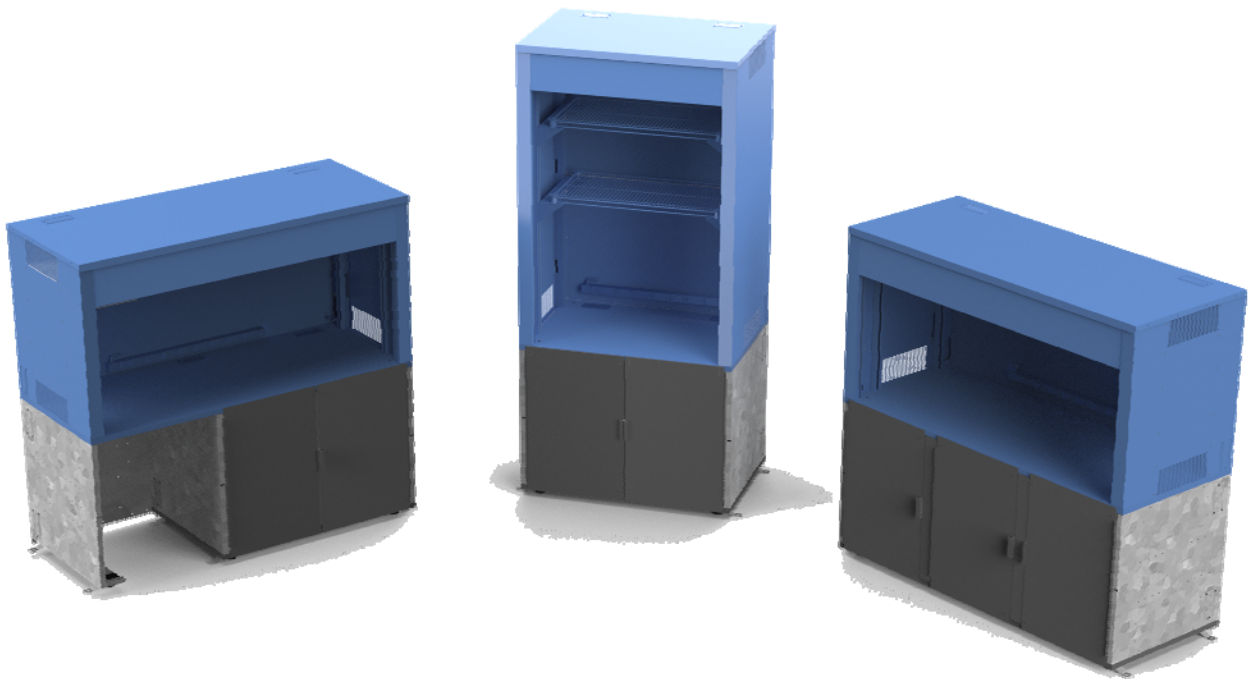




**PRACTICAL QUALITY SYSTEMS**  
*Fast Custom Manufacturing - Nationwide Installation Services*

**Lower Cabinet Kits for Countertop Enclosures PN 60113, 60062, 60063**



Lower Cabinet Kits for countertop enclosures: 45" cabinet for 72" enclosure (PN 60113), 45" cabinet for 45" enclosure (PN 60062), 72" cabinet for 72" enclosure (PN 60063)

## Lower Cabinet Kits for Countertop Enclosures PN 60113, 60062, 60063

### Product Specifications:

#### Lower Cabinet Kit 45"W for 72" W Counter Top Enclosures PN 60113

- Converts any 72" Wide counter top enclosure into a free standing type with a 45" Wide Cabinet with two doors.
- Includes two galvanized *Side Support* assemblies, a *Lower Cabinet* assembly with two doors that have stainless steel fronts, one galvanized *Lower Cabinet Bottom Assembly*, one galvanized *Lower Cabinet Back Panel* and two 44"W X 14" D shelves that create one 44"W X 28"D shelf.
- The shelf has three adjustable positions to create an 18" tall space above or below the shelf or two 14" tall spaces.
- The cabinet Doors feature heavy duty magnetic catches and integral door handles that can be secured with any padlock either keyed or combination type (not included). Cabinet interior dimensions measure approximately 30"H X 44"W X 30" D.
- When the 45" wide *Lower Cabinet* is installed below one side of a 72" Wide enclosure it creates a 26"W open space for a chair on the opposite side.

#### Lower Cabinet Kit for 45" W Counter Top Enclosures PN 60062

- Converts any counter top enclosure into a free standing type with a lower two door cabinet.
- Includes two galvanized *Side Support* assemblies, a *Lower Cabinet* assembly with two doors that have stainless steel fronts, one galvanized *Lower Cabinet Bottom* assembly, one galvanized *Lower Cabinet Back Panel* and two 44"W X 14" D shelves that create one 28"D shelf.
- The shelf has three adjustable positions to create an 18" tall space above or below the shelf or two 14" tall spaces.
- The cabinet Doors feature heavy duty magnetic catches and integral door handles that can be secured with any padlock either keyed or combination type (not included).
- Cabinet interior dimensions measure approximately 30"H X 44"W X 30" D

#### Lower Cabinet Kit for 72" W Counter Top Enclosures PN 60063

- Converts any 72" counter top enclosure into a free standing type with a lower three door cabinet.
- Includes three galvanized *Side Support* assemblies, a *Lower Cabinet* assembly with three doors that have stainless steel fronts, two door dividers, one galvanized *Lower Cabinet* bottom
- Assembly, one galvanized *Lower Cabinet* back panel and two 71"W X 14" D shelves that create one 28"D shelf.
- The shelf has three adjustable positions to create an 18" tall space above or below the shelf or two 14" tall spaces.
- The cabinet doors feature heavy duty magnetic catches and integral door handles that can be secured with any padlock either keyed or combination type (not included).
- Cabinet interior dimensions measure approximately 30"H X 71"W X 30" D

### Engineering Drawing Reference Notes

To view and manipulate 3D models of any assembly; visit [www.edrawingsviewer.com](http://www.edrawingsviewer.com) and download the free eDrawings viewer software, then open the eDrawing format files (.EASM) found in our *Engineering Drawings* folders.

For more product dimensional specifications; download the *Engineering Drawings* folder for files in DWG, PDF and EASM formats on our website from the tool bar on the individual product pages or from our *Product Resources* page.

### User Manual Reference

Refer to manual 10010703-UM for assembly and installation instructions

User manuals are available for download in PDF format on our website from the tool bar on the individual product pages or from our *Product Resources* page.