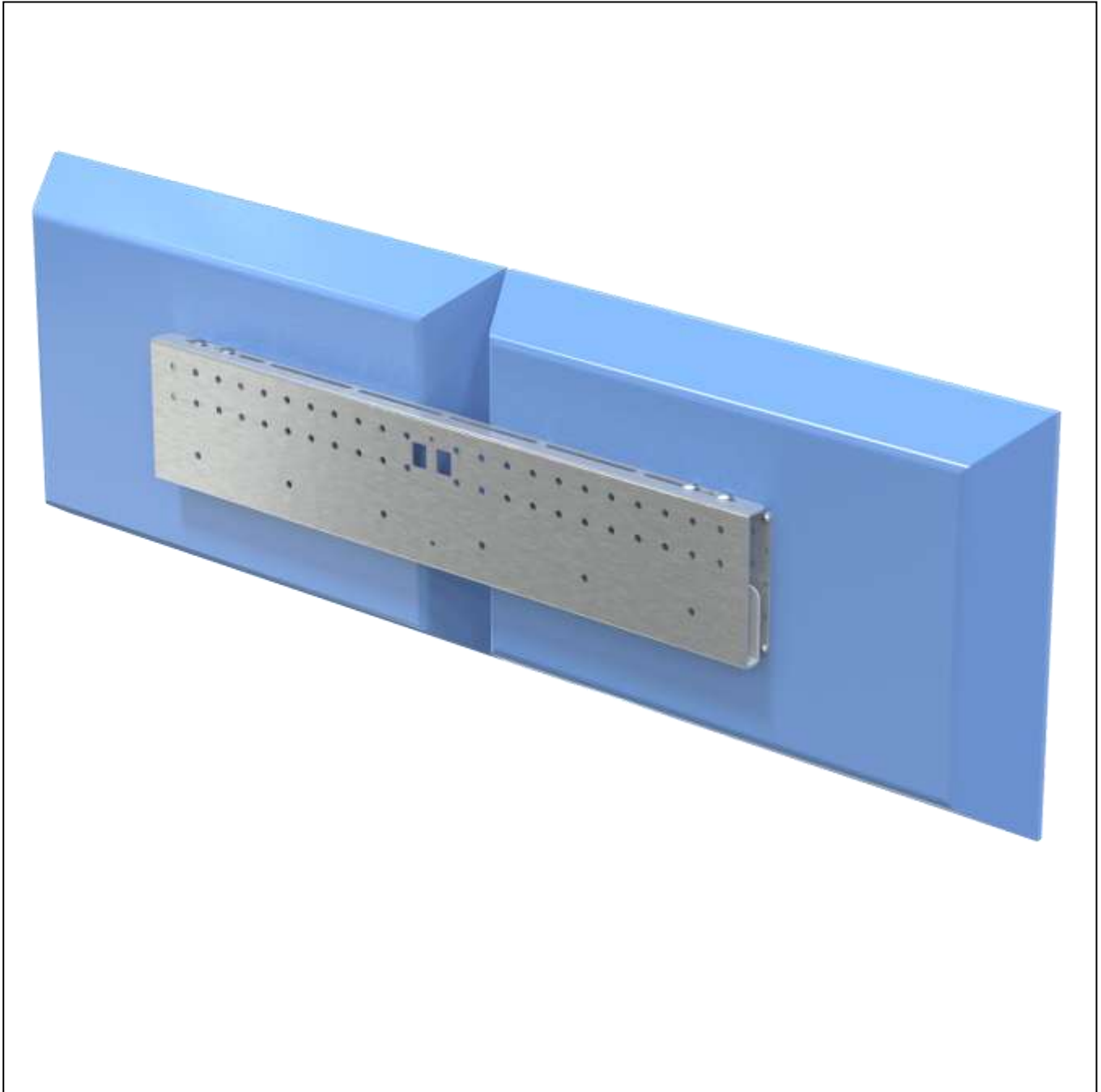


PQS

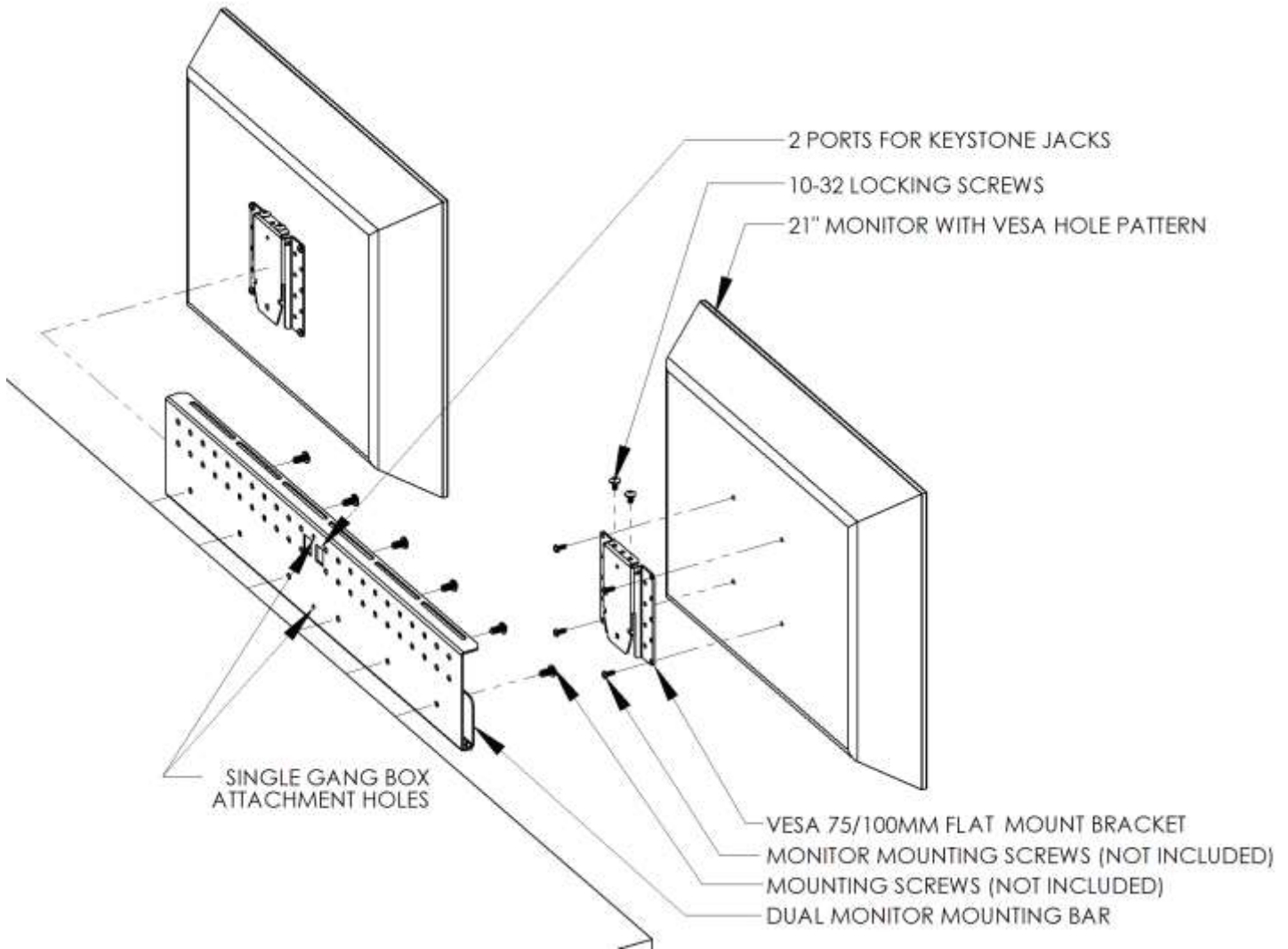
PRACTICAL QUALITY SYSTEMS
Fast Custom Manufacturing - Nationwide Installation Services

Two Screen Flat Wall Mount 75/100 VESA 80911 & 80911-SS



Note: 80911-SS shown with two 21" monitors mounted on VESA 75/100mm *Flat Mount Brackets*

Two Screen Flat Wall Mount 75/100 VESA 80911 & 80911-SS



Note: 80911-SS shown with two 21" monitors mounted on VESA 75/100mm *Flat Mount Brackets*.

PRODUCT SPECIFICATIONS

- Supports two touch screens, terminals, or flat panel monitors up to 21" in size diagonally.
- Available to support all VESA and NON VESA compatible touch screens, terminals or flat panel monitors. Refer to the *Custom Fit Pan and Tilt Heads* page on our website found in the *Other Products* section for the most current list of options. If we don't have a compatible mount or pan and tilt head; send us a sample of your screen and we'll create a *Custom Fit* solution for you.
- Attaches to a wall, any flat vertical surface or to a shelf.
- A single monitor can be positioned anywhere along the length of the mount bar.
- *Flat Mount Bracket* has 75mm and 100mm VESA patterns to mount to back of monitor.
- The mount bar's two outer holes are 16" apart to allow for fixing to vertical studs inside walls.
- 10-32 screws secure the monitors in place.
- Mounting bar includes two ports for keystone jacks as well as attachment holes for a single gang box.
- Mounting bracket PN 80911 is made of Galvanized Steel and PN 80911-SS is made of Stainless Steel.
- PQS also offers a *Flat Mount Bracket* for single VESA 75/100mm compatible monitors up to 21" (see PN 80910 & PN 80910-SS.)

Two Screen Flat Wall Mount 75/100 VESA 80911 & 80911-SS

- For larger monitors we offer single *Flat Mount Bracket* for VESA 100/200mm compatible monitors (see PN 80913).
- Most of our modular mounting systems can be easily reconfigured in the field for a different application by either adding or removing a few parts to create a support solution for any mounting location.

MOUNTING OPTIONS:

- All mounting systems can be mounted with any of the following mounting systems and are available with *Custom Fit Tilt* heads or mounting hole patterns for all non VESA compatible screens. Refer to the *Custom Fit Pan and Tilt Heads* page on our website found in the *Other Products* section for the most current list of options. If we don't have a compatible pan and tilt head send us a sample of your screen and we'll create a *Custom Fit* solution for you.

All of our screen pan and tilt heads can be used with any of the following mounting systems.

