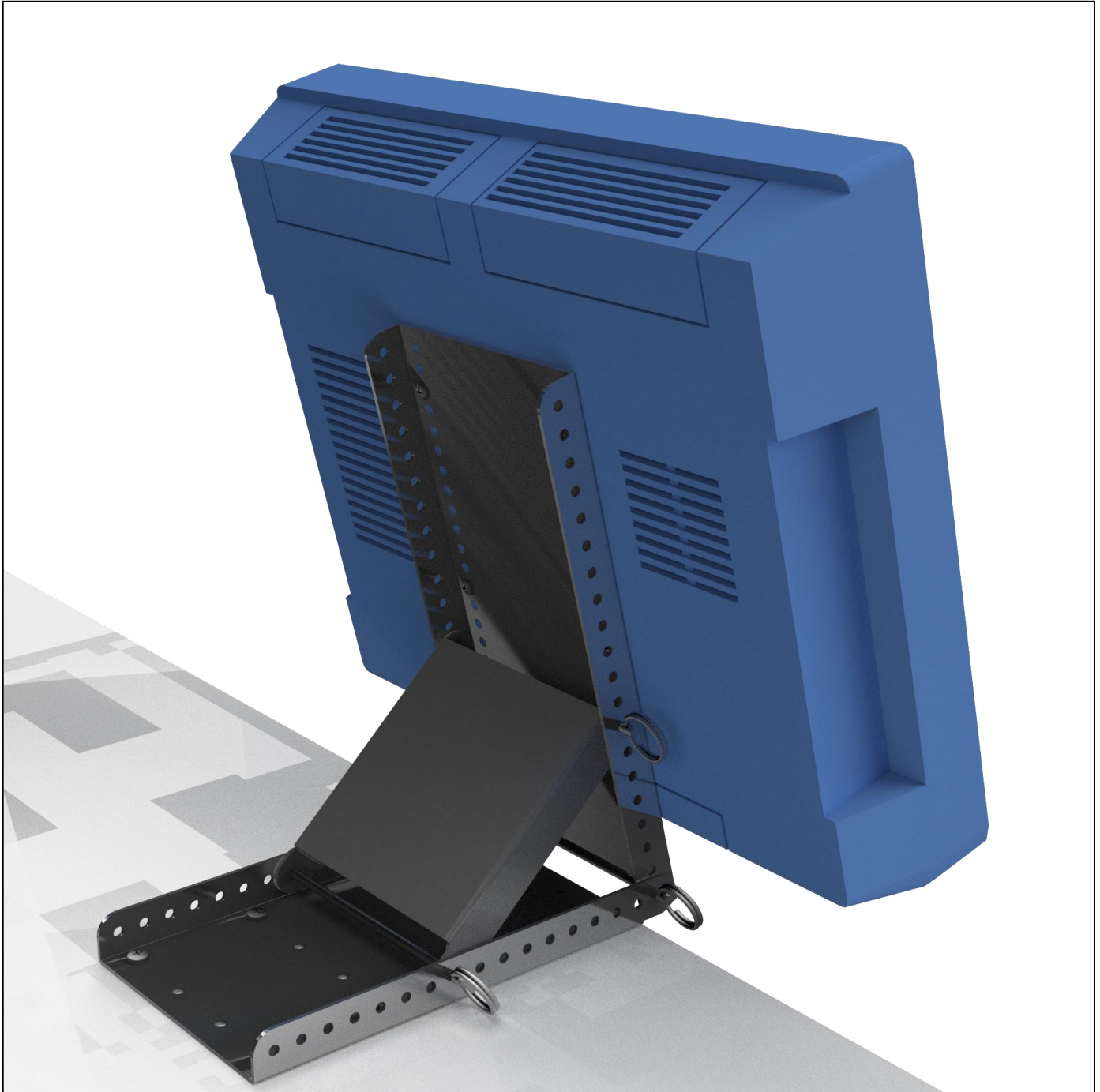


PQS

PRACTICAL QUALITY SYSTEMS
Fast Custom Manufacturing - Nationwide Installation Services

35 LB Tilting Shelf Edge Mount 100mm VESA PN 80941



NOTE: 35LB Shelf Edge Mount with shown with 15" terminal

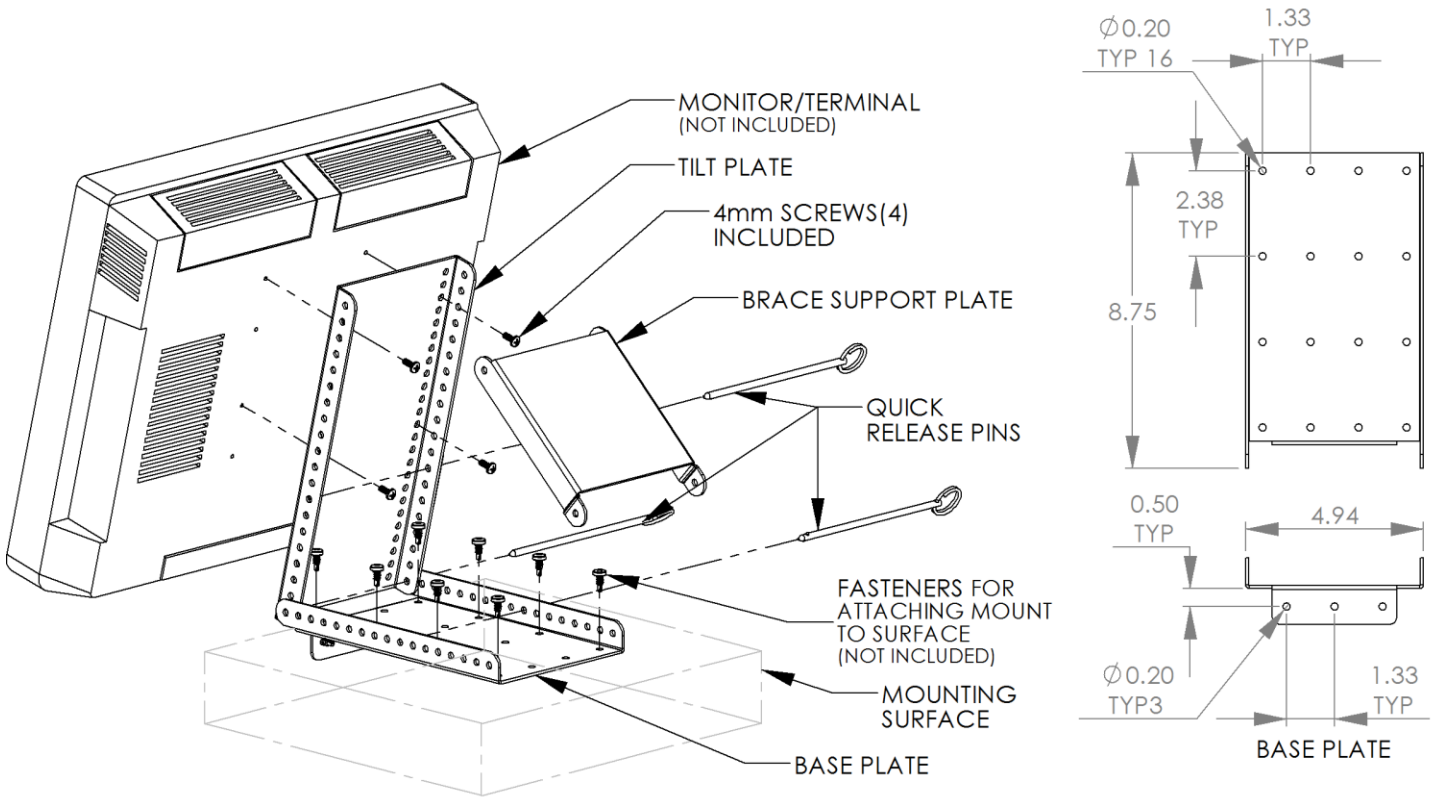
info@practicalqualitysystems.com

WWW.PRACTICALQUALITYSYSTEMS.COM

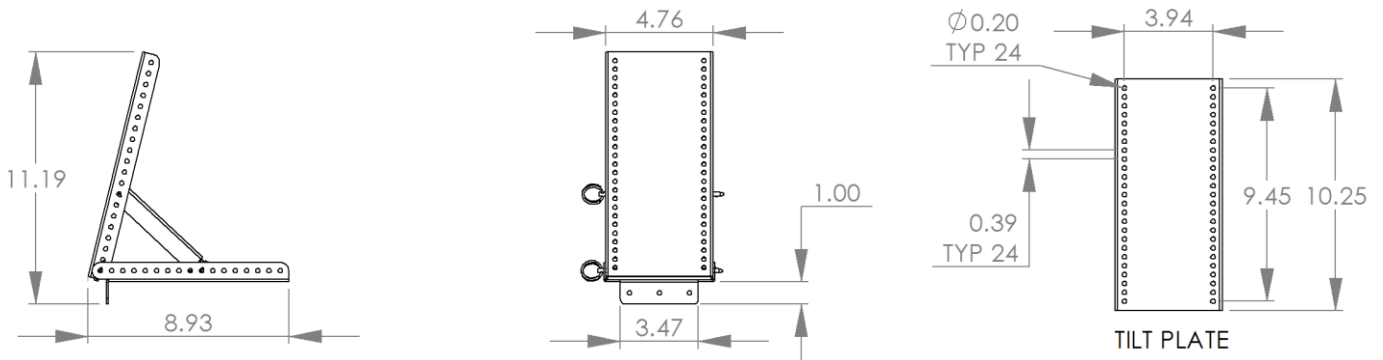
(818) 993-1022

ALL PRODUCTS PATENT PENDING

35 LB Tilting Shelf Edge Mount 100mm VESA PN 80941



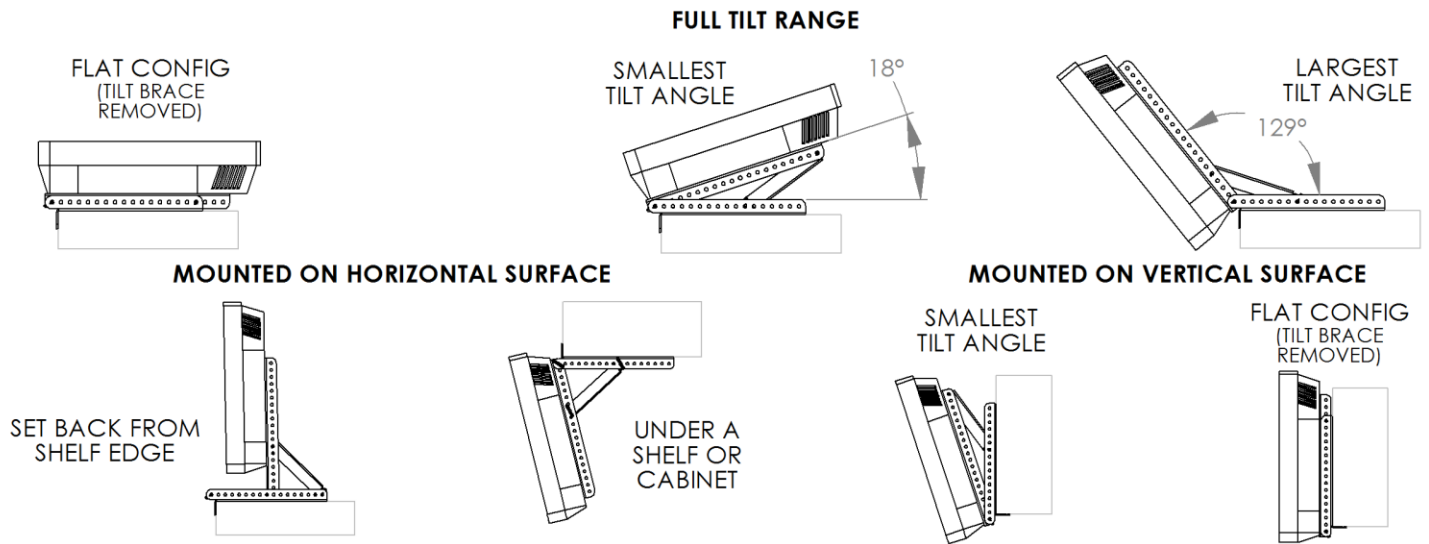
PRODUCT SPECIFICATIONS



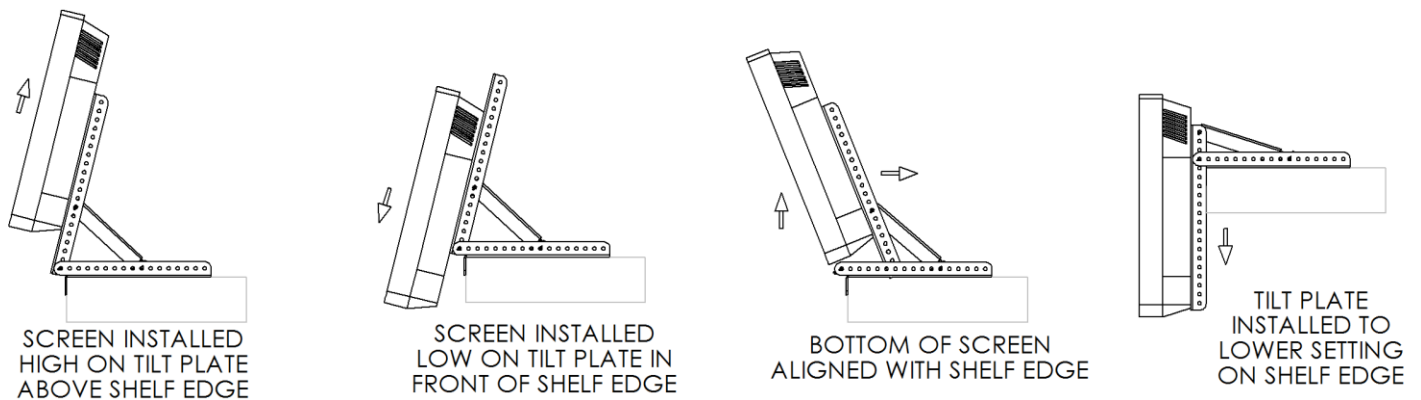
- **PQS** offers several mounting options for medium duty applications. All mounts available with 100mm VESA patterns.
- The assembly supports touch screens, terminals or flat panel monitors up to 35LBs.
- Attaches to a shelf or any flat horizontal surface edge.
- Adjusts without tools to lock the screen at any position or up and down allowing for a wide range of screen locations.
- Made of 14 gauge stainless steel to resist corrosion and blend with commercial kitchen environments.

35 LB Tilting Shelf Edge Mount 100mm VESA PN 80941

- This assembly can be oriented and installed in multiple configurations either horizontally or vertically.
- Tilt range is from 18 degrees to 129 degrees measured from the mounting surface.
- Removing the *Tilt Brace* allows you to align the *Tilt Plate* so that it's parallel to the mounting surface.



- The screen height can be adjusted two ways. One way is by simply adjusting the position of the screen along the *Tilt Plate*. The second way is by adjusting where the *Tilt Plate* attaches to the *Base Plate* as shown below.
- It is also possible to install the screen so that it is aligned or set back from the shelf edge as shown.



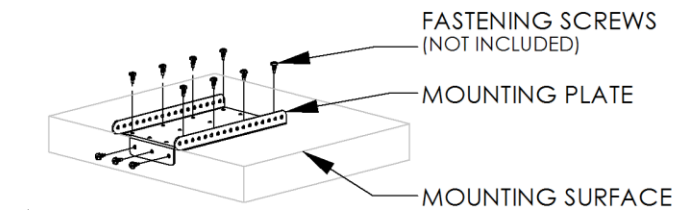
- To order this assembly use part# 80941. This product is also available in a wall mountable version. See part# 80942.
- To order this assembly with a *Custom Fit* hole pattern to accommodate NON VESA compatible screen; use part number 80941 and add the part number suffix found on the *Custom Fit Pan and Tilt Heads* page on our website.

The page can be found listed under the *Other Products* section. If the website doesn't show a suffix that represents your screen; then send us your screen and we'll create a *Custom Fit* solution for you.

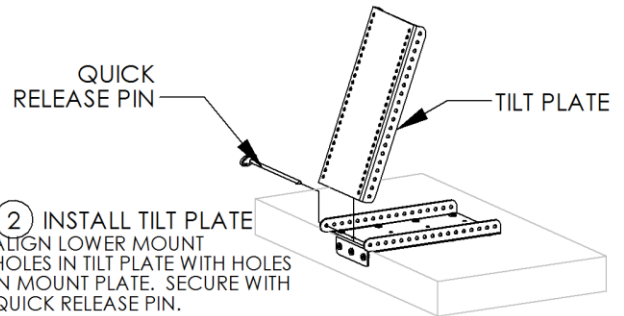
35 LB Tilting Shelf Edge Mount 100mm VESA PN 80941

INSTALLATION INSTRUCTIONS

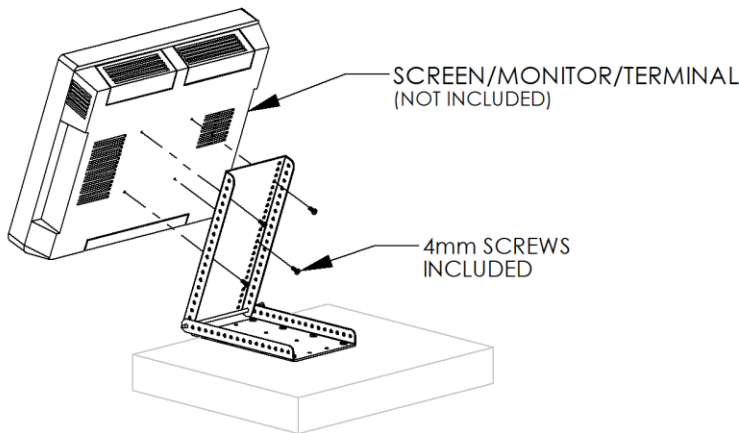
- The installation instructions below are similar for all configurations.



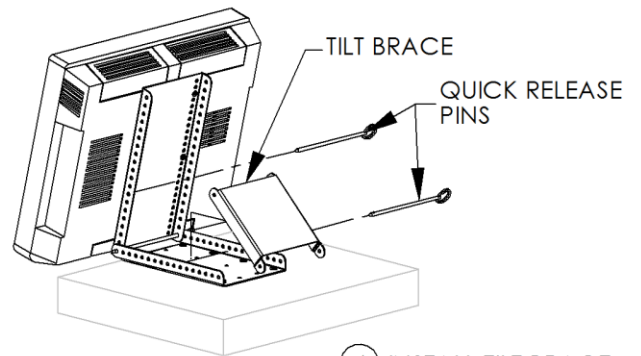
① **INSTALL MOUNT PLATE**
USE APPROPRIATE FASTENERS TO SECURE MOUNT PLATE TO MOUNTING SURFACE



② **INSTALL TILT PLATE**
ALIGN LOWER MOUNT HOLES IN TILT PLATE WITH HOLES IN MOUNT PLATE. SECURE WITH QUICK RELEASE PIN.



③ **INSTALL SCREEN TO TILT PLATE**
CENTER THE BACK OF SCREEN ON THE TILT PLATE. RAISE/LOWER THE SCREEN TO DESIRED HEIGHT. ALIGN WITH THE HOLES IN THE TILT PLATE THAT MOST CLOSELY MATCH THE DESIRED MOUNT HEIGHT. USE APPROPRIATE SCREWS TO MOUNT SCREEN IN PLACE.



④ **INSTALL TILT BRACE**
TILT SCREEN TO THE APPROXIMATE DESIRED POSITION. ORIENT TILT BRACE SO THAT THE WIDER END MATES TO THE MOUNT PLATE. FIND HOLES IN THE MOUNT PLATE AND TILT PLATE, TO ATTACH TILT BRACE TO, THAT MOST CLOSELY MATCHES THE DESIRED TILT. SECURE IN PLACE WITH QUICK RELEASE PINS.

35 LB Tilting Shelf Edge Mount 100mm VESA PN 80941

MOUNTING OPTIONS: 35LB CLASS MOUNTING PRODUCTS:

- For non-VESA compatible pan and tilt heads use 80941 and add the part number suffix found on the *Custom Fit Pan and Tilt Heads* page on our website. The page can be found listed under the "Other Products" section.
- **PQS** offers several mounting options for medium duty applications. All mounts available with 100mm VESA patterns. Most are also available with 200x200 & 200x100mm VESA mounting patterns.

