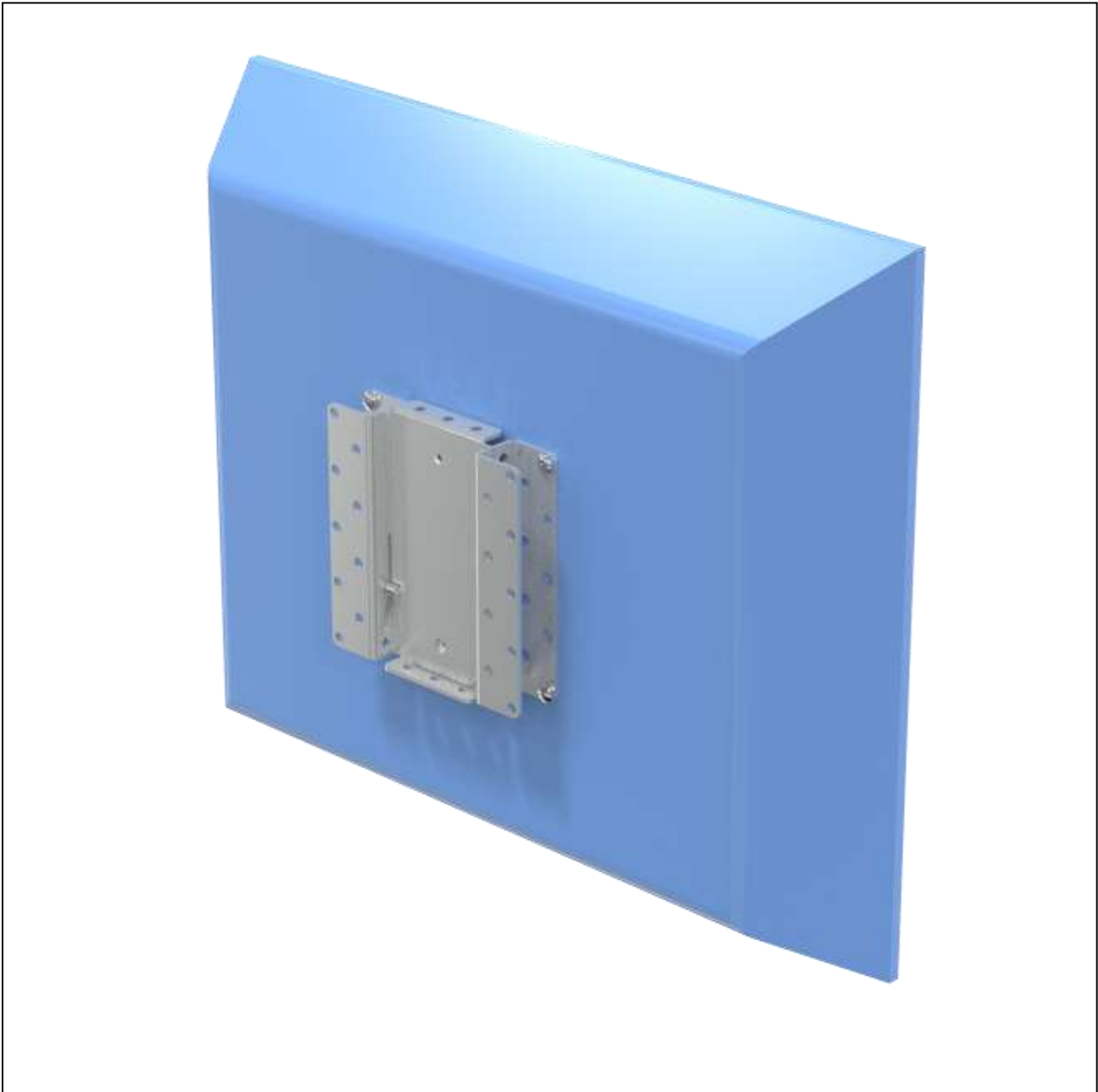


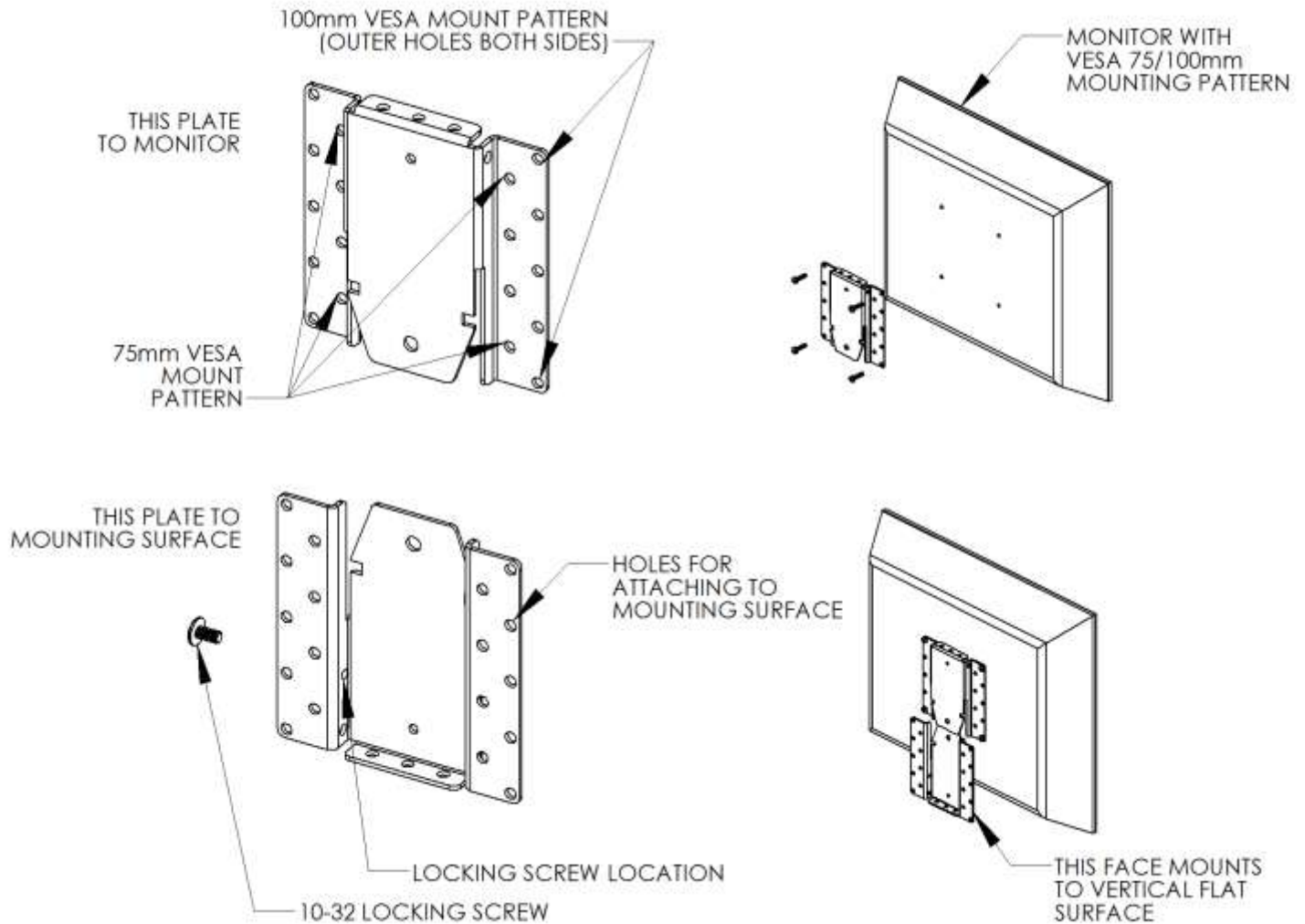
PQS

PRACTICAL QUALITY SYSTEMS
Fast Custom Manufacturing - Nationwide Installation Services

Flat Wall Mount 75/100 VESA PN 80910 & 80910-SS



NOTE: 80910-SS with a 75/100mm VESA pattern shown. All mounting systems are also available for NON VESA compatible screens.



NOTE: 80910 with a 75/100mm VESA pattern shown. All NON VESA compatible assemblies with will appear differently.

PRODUCT SPECIFICATIONS

- Available to support all VESA and NON VESA compatible touch screens, terminals or flat panel monitors. Refer to the *Custom Fit Pan and Tilt Heads* page on our website found in the *Other Products* section for the most current list of options. If we don't have a compatible mount or pan and tilt head; send us a sample of your screen and we'll create a *Custom Fit* solution for you.
- Attaches to a wall or any other flat vertical surface.
- Both mounting plates are identical and interchangeable. Either one can be mounted to the back of the monitor and to the flat surface that the monitor is to be mounted to.
- Bracket supports 75mm and 100mm VESA mounting hole patterns.
- 10-32 screws secure brackets in place at locking screw locations.
- Mounting bracket PN 80910 is made of Galvanized Steel and PN 80910-SS is made of Stainless Steel.
- PQS also offers a flat mount bracket for dual VESA 75/100mm compatible monitors up to 21" (see PN 80911 & PN 80911-SS).

Flat Wall Mount 75/100 VESA PN 80910 & 80910-SS

- For larger monitors we offer single flush mount bracket for VESA 100/200mm compatible monitors (see PN 80913).
- For assembly instructions see the *User Manual* which can be downloaded from the *Product Resources* page on our website.

MOUNTING OPTIONS:

- All mounting systems are available with *Custom Fit Tilt Heads* for all non VESA compatible screens. Refer to the *Custom Fit Tilt Head* page on our website for a current list of all non VESA compatible tilt heads. If we don't currently have a tilt head to fit your screen, we can create one for you.

