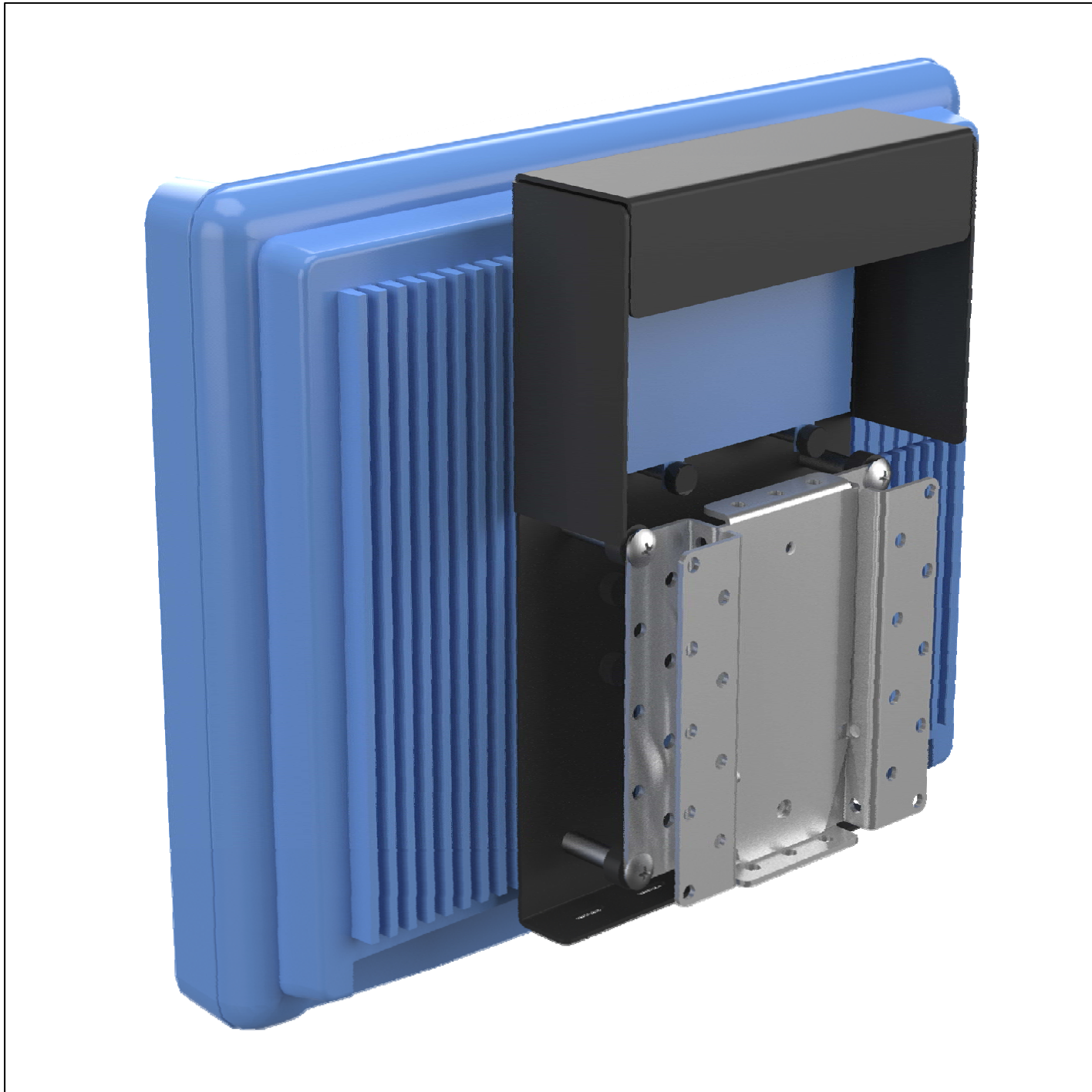


PQS

PRACTICAL QUALITY SYSTEMS

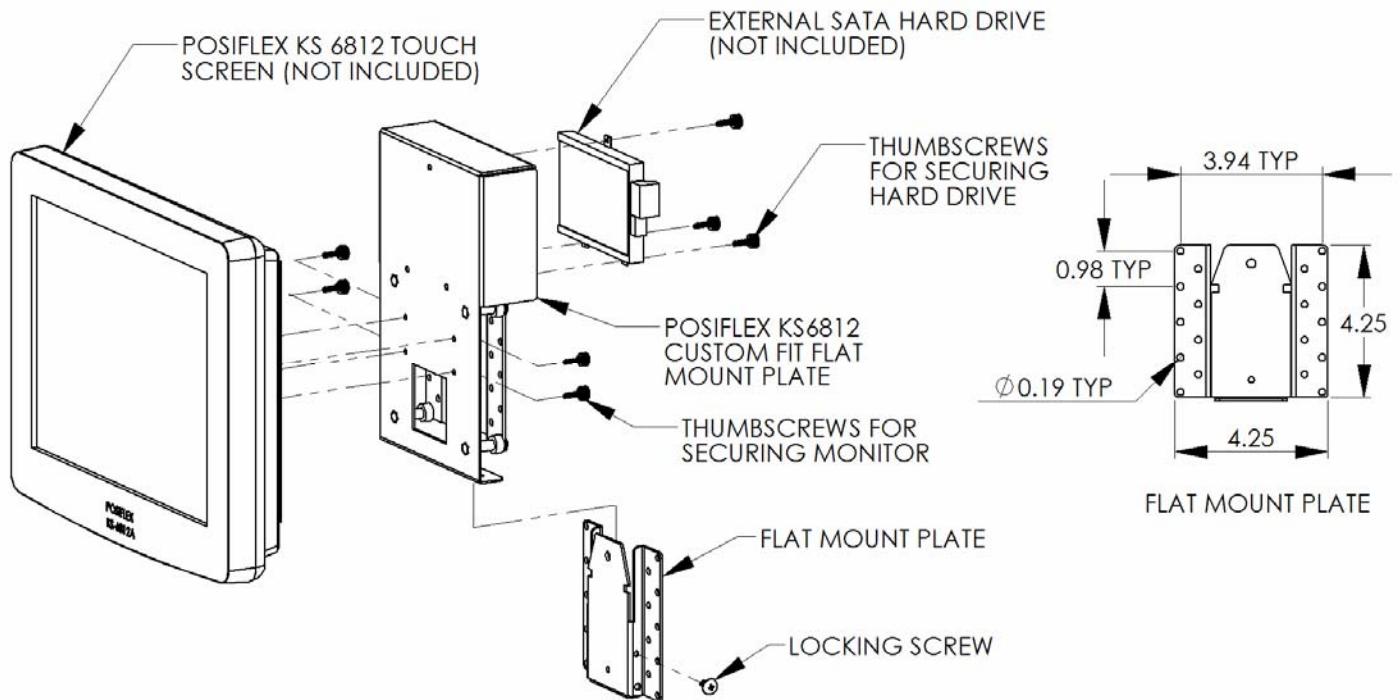
Fast Custom Manufacturing - Nationwide Installation Services

Custom Fit Flat Wall Mount for Posiflex KS6812 PN 80910-400



NOTE: 80910-400 shown with a Posiflex KS6812 Monitor, and its external SATA hard drive installed.

Custom Fit Flat Wall Mount for Posiflex KS6812 PN 80910-400



NOTE: 80910-400 shown with a Posiflex KS6812 Monitor, and its external SATA hard drive installed.

PRODUCT SPECIFICATIONS

- Supports a Posiflex KS6812 touch screen.
- Attaches to a wall or any other flat vertical surface.
- The *Custom Fit* mount provides a semi-enclosed secure mounting location for the Posiflex KS-6812's external SATA hard drive.
- Monitor and external SATA hard drive are secured using thumbscrews for easy removal.
- 10-32 screws secure brackets in place at locking screw locations.
- PQS also offers a flat mount bracket for dual Posiflex KS6812 monitors (see PN 80911-400).
- For assembly instructions see the *User Manual* which can be downloaded from the *Product Resources* page on our website.
- All mounting systems are available with *Custom Fit Pan and Tilt Heads* for all non VESA compatible screens. Refer to the *Custom Fit Pan and Tilt Heads* page on our website for a current list of all non VESA compatible pan and tilt heads. If we don't currently have a pan and tilt head to fit your screen, we can create one for you.

Custom Fit Flat Wall Mount for Posiflex KS6812 PN 80910-400

MOUNTING OPTIONS:

- PQS also offers flat mount brackets for monitors with 75/100mm (PN 80910) & 100/200mm (PN 80913) VESA compatible mounting configurations.
- This assembly is part of the *UVHM* system which includes many components that can be mixed and matched to create a support solution for any mounting location. Most of the *UVHM* assemblies can be easily reconfigured in the field for a different application by either adding or deleting a few parts.
- All of our screen pan and tilt heads including our *Custom Fit* products can be used with any of the following mounting systems.

