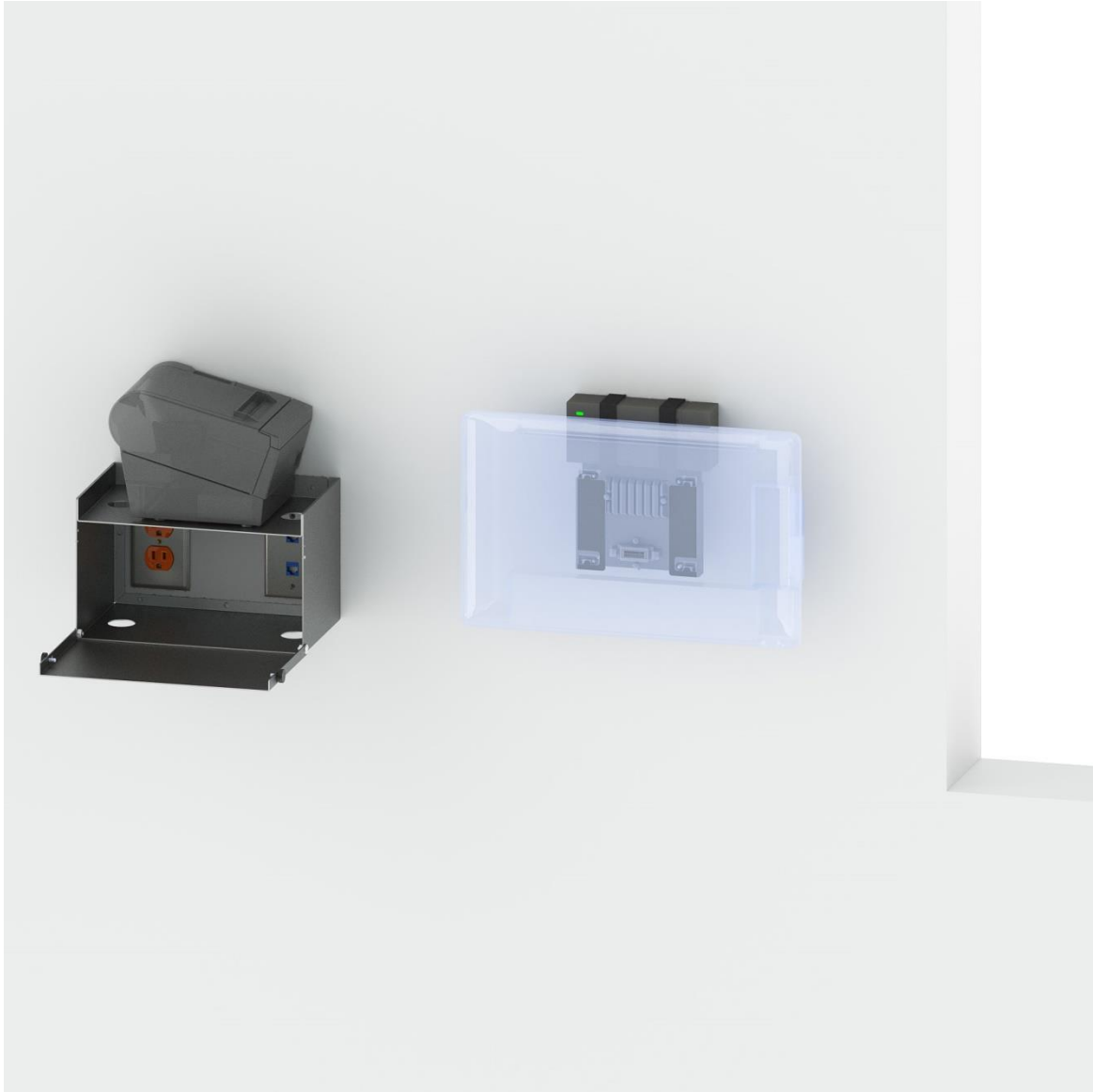
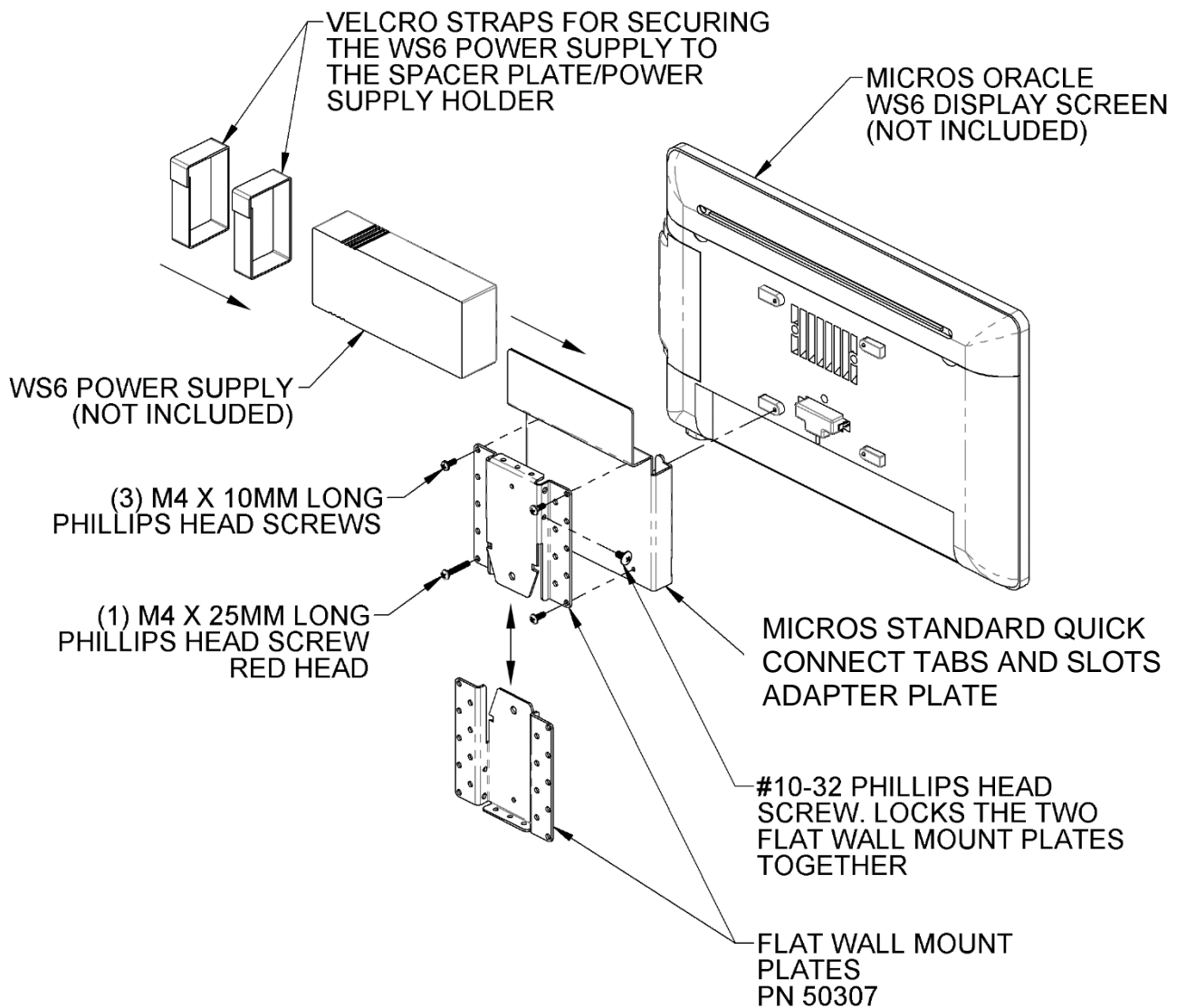


# PQS

PRACTICAL QUALITY SYSTEMS  
*Fast Custom Manufacturing - Nationwide Installation Services*

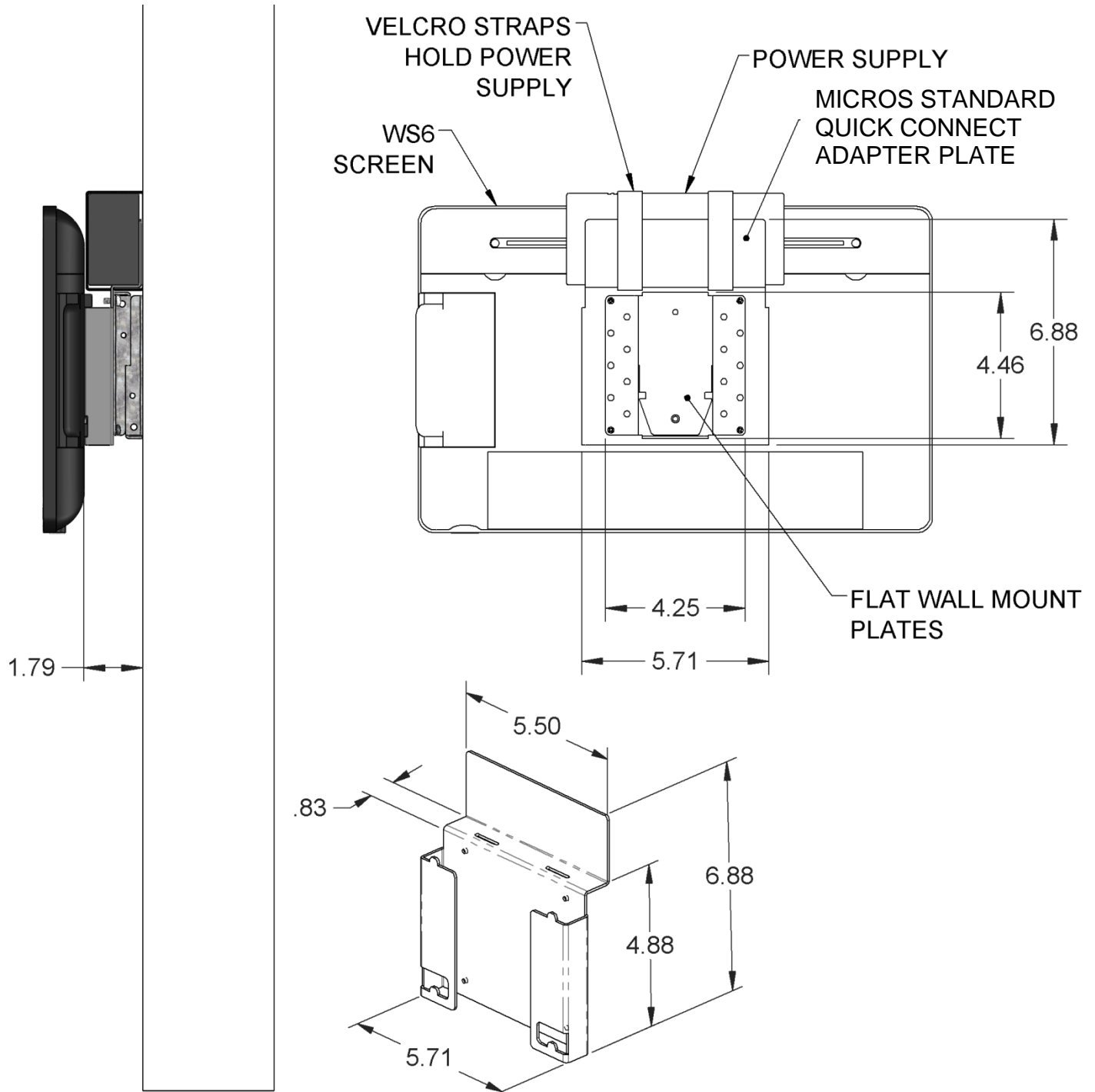


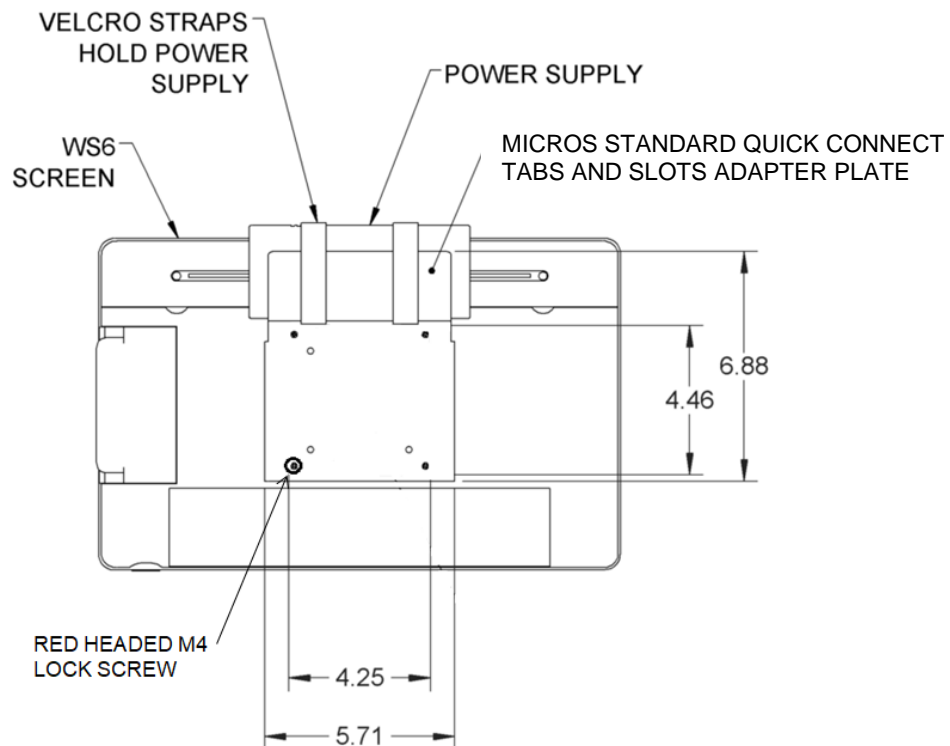
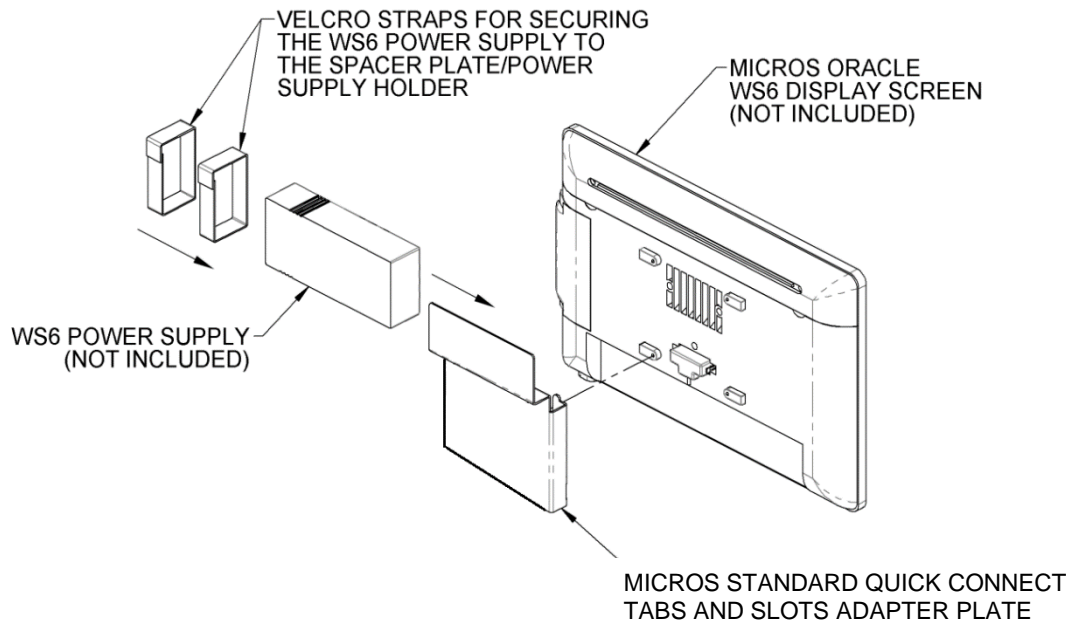
Terminal and printer are not included



### General Features

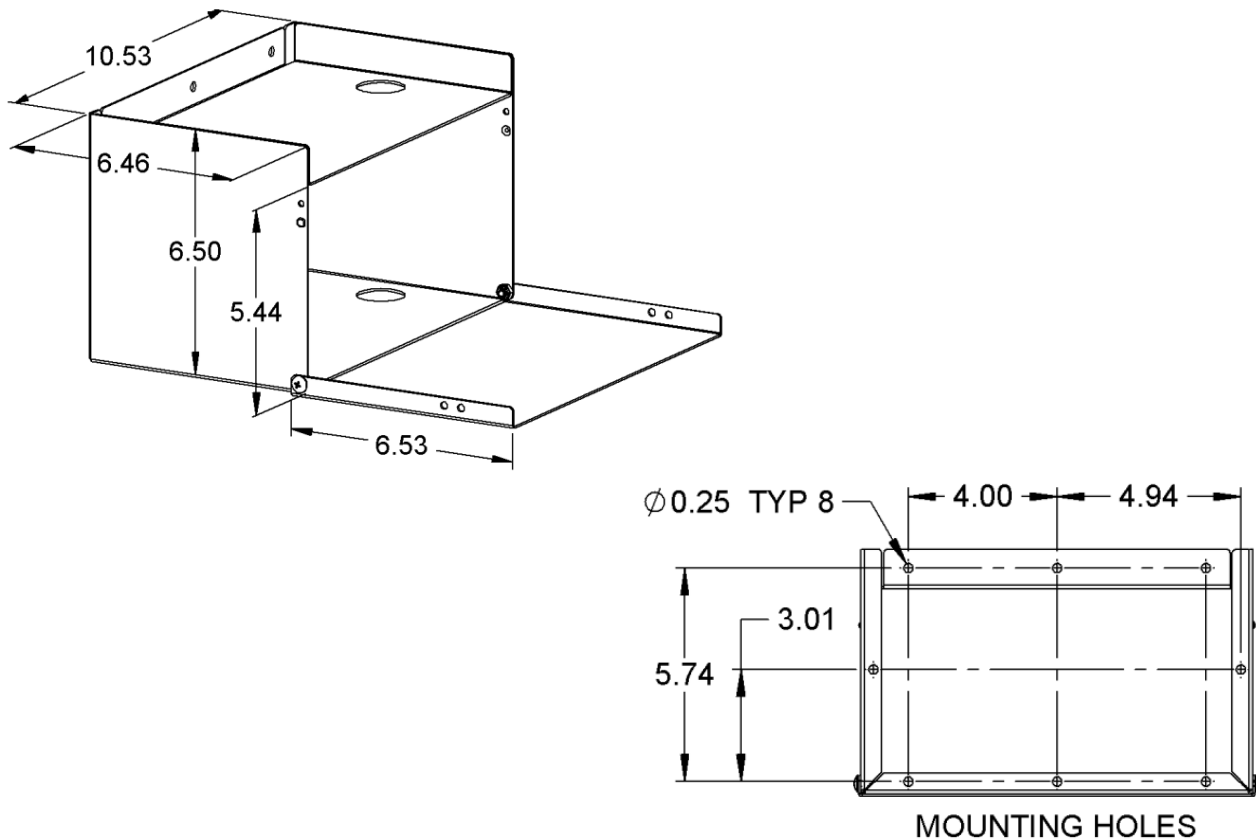
- One of these wall mounts supports all Oracle MICROS terminals with the MICROS Quick Connect tabs and slots mounting standard, the other wall mount supports a standard POS printer for Point of Sale / POS, Kitchen Display Systems / KDS in commercial kitchens, retail, restaurants, offices, industry, shops, medical, maritime, schools, laboratory and many other applications.
- Both of these mounting systems support up to 15 lbs.
- Includes Flat wall mount; PN 80910-GAL-MICROS with galvanized mounting plates and a printer wall mount with storage compartment PN 80691-BLK (also available in silver gray PN 80691-CH)
- Visit [kitchendisplaysystems.com](http://kitchendisplaysystems.com) for a free, easy to understand tutorial that covers all aspects of Kitchen Display Systems knowledge!
- For more information on the individual components included in this package please refer to the assembly sketches in this document and the downloadable product information sheets available on our website for each of the product pages for each part number.





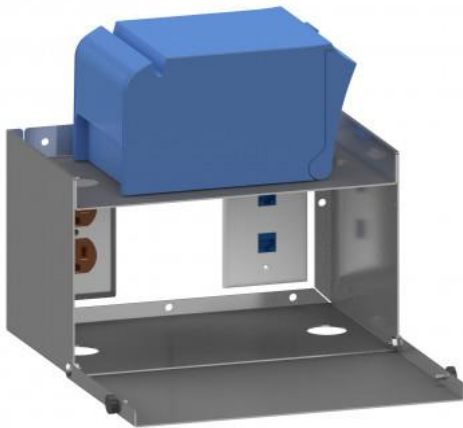
Install the Oracle MICROS External Power Supply PN 400351-038-PT or other model on the power supply holder and secure with the hook and loop straps.

Once the four taps on the Micros compatible adapter plate are properly inserted into the four slots on the back of the terminal; tighten the red headed lock screw to secure the WS6 or other terminal to the adaptor plate.

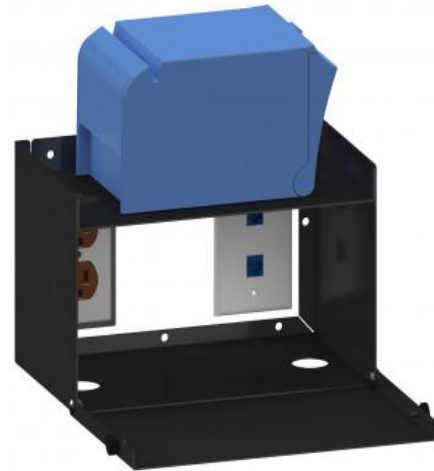


### General Features

- This printer wall mount can be used as a universal mounting bracket for Point of Sale / POS printers in commercial kitchens, retail, restaurants, offices, industry, shops, medical, maritime, schools, laboratory and many other applications.
- Designed with pre-punched mounting holes along the rear section to allow easy attachment to any wall or other flat vertical surface.
- Supports printers up to 6.5" wide and 10" long and up to 10 lbs.
- When used with most standard-length printers there is usually enough room inside the storage compartment to store the power supply and cords.
- Standard power and data outlets can be installed concealed on the wall within the cut out section of the rear panel of the storage compartment.
- Two detents allow the storage compartment door to be opened, closed and latched without tools or fasteners. Optionally; the included thumbscrews for a more secure closure. Two optional security screws (hardware kit PN 79901) can be installed in place of the thumbscrews for added security. Please request these screws upon ordering.
- For black powder coat finish order; PN 80691- BLK, for silver/ gray finish order PN 80691- CH.

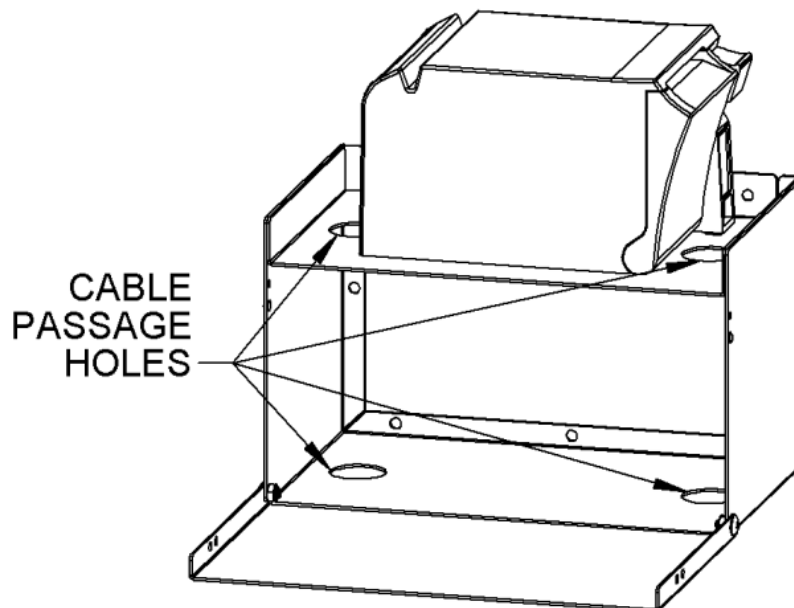


PN 80691-CH

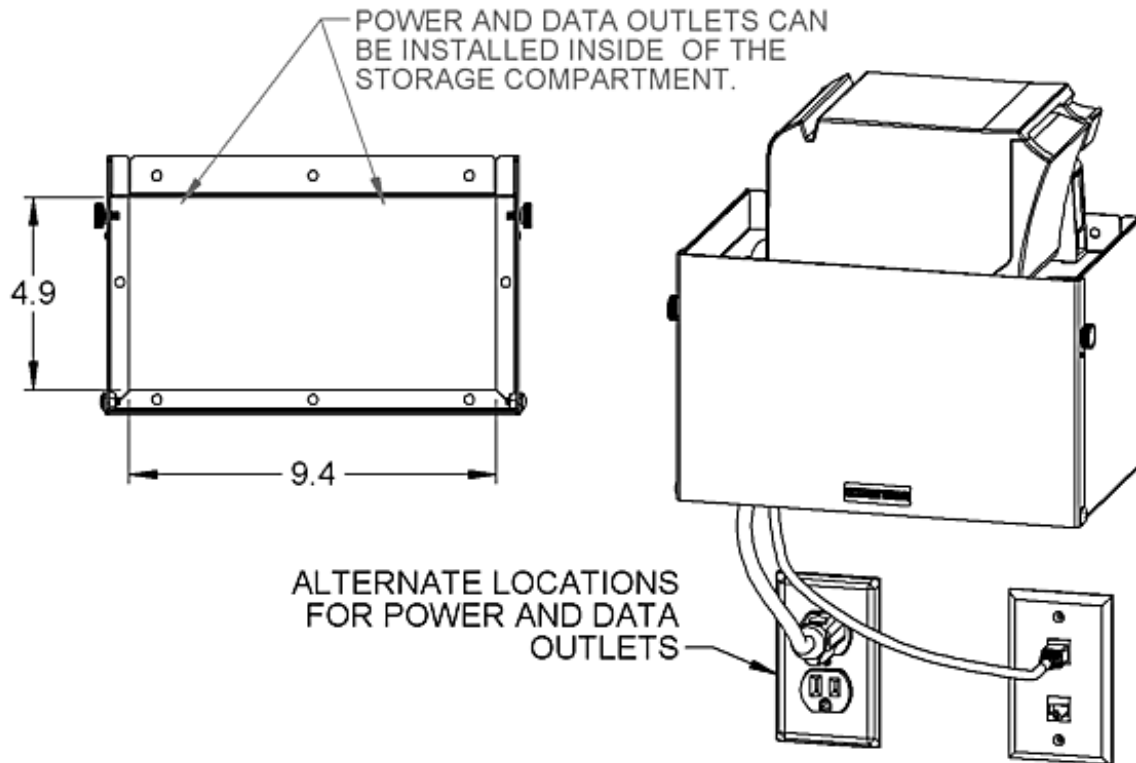


PN 80691-BLK

- The interior dimensions of the printer tray are 10¼" Long by 6½" Wide by 1" Tall
- The interior dimensions of the storage compartment are 10-3/8" Long by 6½" Wide by 5½" Tall
- The dimensions of the cut out section in the rear panel of the storage compartment are 9.4" Long by 4.9" Tall



- Two cable passage holes are located on the top of the printer tray to allow power and cable cables to be routed directly down into storage compartment and be completely concealed. Another two cable passage holes are located on the interior bottom panel of the storage compartment to allow access to outlets located adjacent to the assembly.



**Partial List of compatible printers that will fit the interior dimensions of the Flat Printer Tray:  
Which measures; 6½" W X 10¼" L X 1" D.**

Anser U2.  
Brother QL 800, Brother PTP700.  
Citizen CT-E351.  
Clover P500, Clover Mini.  
Custom America CT-E351.  
Dymo LabelWriter 450, Dymo LabelWriter Wireless, Dymo LabelManager PnP.  
Epson TM-T88V/VI, Epson TM- T20II, EpsonTM - L90, EpsonTM-U220 Type B & D.  
POS-X Evo HiSpeed.  
Rollo Printer.  
Sato FX3-LX, Sato WS2.  
Square Terminal.  
Star Micronics mC-Print3.



**Below is a partial list of Oracle MICROS compatible Terminals that use the MICROS Quick Connect tabs and slots mounting standard:**

Oracle MICROS Workstation 625X.  
Oracle MICROS Workstation 655X.  
Oracle MICROS Workstation 6 POS Terminal.  
Oracle MICROS Workstation 610.  
Oracle MICROS Workstation 620.  
Oracle MICROS Workstation 625.  
Oracle MICROS Workstation 650.  
Oracle MICROS Workstation 625.  
Oracle MICROS Workstation 655.  
Oracle MICROS Compact Workstation 310.  
Oracle MICROS Express Station 4 Series.  
Oracle MICROS Express Station 400.  
Oracle MICROS Express Station 410.

**We believe in ethical SEO relevancy; the following section was included to assist the all-knowing algorithms in locating this page; however, some humans like it too.**

- MICROS Wall mount, MICROS Wall mounting bracket, MICROS Wall mount bracket, MICROS Terminal Wall mount, MICROS Terminal Wall mounting bracket, MICROS Terminal Wall mount bracket.
- MICROS Point of Sale terminal Wall mount, MICROS KDS Wall mount, MICROS KDS Wall mounting bracket, MICROS KDS Wall mount bracket, MICROS Kitchen Display System Wall mount.

**Interactive Catalog of Mounting Systems for Workstation 610, Compact 310 & Express Station 400 + Printers**

These mounts are included in the [Mounting Systems for Workstation 610, Compact 310 & Express Station 400 & printers](#) product group pages on our website.

For more information; click on the images or descriptions to visit the individual product pages on our website.

PDF Product Information Sheets are available at the Product Attachments tab on each product page.

[Practical Quality Systems Home Page](#)



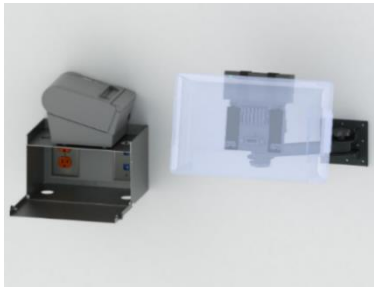
[PN 80003-MICROS - Wall Mount + two adjustable 8" arms + WS6 Pan - Tilt Head + printer tray + PS holder](#)



[PN 80014-MICROS - Countertop Stand for Oracle MICROS Workstation 6 and a Printer](#)



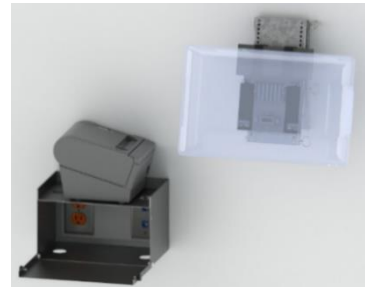
[PN 80247-MICROS - Under Counter Mount + two 3" risers + 2 adjustable 8" arms + WS6 Pan - Tilt Head + Flat Printer Tray + PS holder](#)



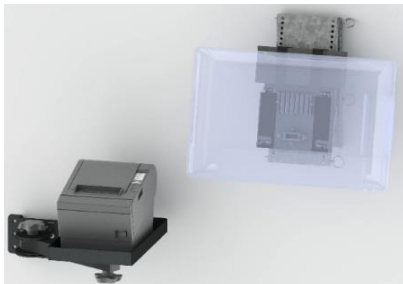
[PN 90500-MICROS - Oracle MICROS Workstation 6 wall mount + arm + printer shelf](#)



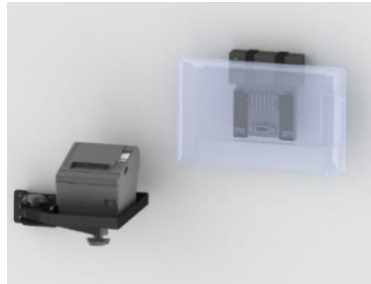
[PN 90510-MICROS - Oracle MICROS Workstation 6 flat wall mount and a printer shelf](#)



[PN 90520-MICROS - Oracle MICROS Workstation 6 tilting wall mount + printer shelf](#)



[PN 90530-MICROS - Oracle MICROS Workstation 6 tilting wall mount + printer tray with an arm](#)



[PN 90540-MICROS - Oracle MICROS Workstation 6 flat wall mount + printer tray with an arm](#)

### Interactive Catalog of Product Sub Groups

There are many individual products included in the various product sub groups featured on these pages.

Click on the images or descriptions to visit the individual product sub group pages on our website.

For Information about individual products; click on the "Product Attachments" tab on each of the individual product pages.

[Practical Quality Systems Home Page](#)



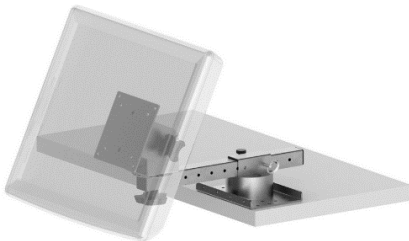
[Wall Mounts for Screens](#)



[Wall Mounts for POS Printers](#)



[Wall Mounts for Screens and POS Printers](#)



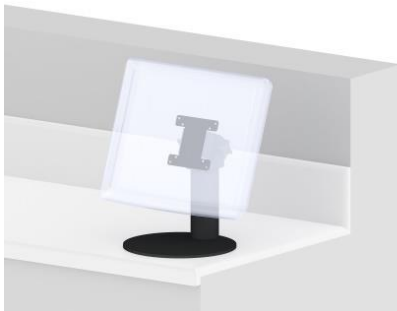
[Shelf Edge Mounts for Screens](#)



[Shelf Edge Mounts for POS Printers](#)



[Shelf Edge Mounts for Screens and POS Printers](#)



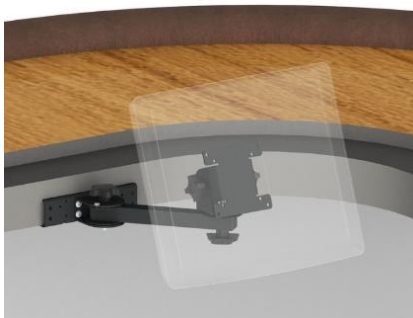
[Counter Top Mounts for Screens](#)



[Counter Top Mounts for POS Printers](#)



[Counter Top Mounts for Screens and POS Printers](#)



[Under Counter Mounts for Screens](#)



[Under Counter Mounts for POS Printers](#)



[Under Counter Mounts for Screens and POS Printers](#)

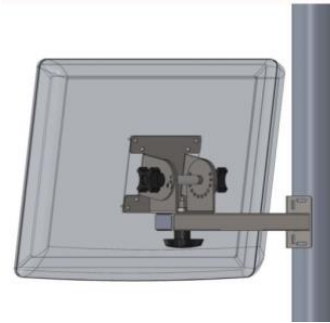
### Interactive Catalog of Product Sub Groups

There are many individual products included in the various product sub groups featured on these pages.

Click on the images or descriptions to visit the individual product sub group pages on our website.

For Information about individual products; click on the "Product Attachments" tab on each of the individual product pages.

[Practical Quality Systems Home Page](#)



[Pole Mounts for Screens](#)



[Pole Mounts for POS Printers](#)



[Ceiling Mounts for Screens](#)



[Oracle MICROS Mounting Systems](#)



[NCR Aloha KDS Mounting Solutions](#)



[QSR KDS Mounting Solutions](#)



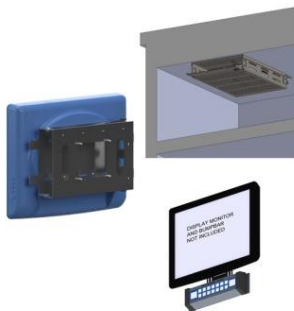
[Logic Controls Bematech KDS Mounting Solutions](#)



[Universal Kitchen Display System Mounting Packages](#)



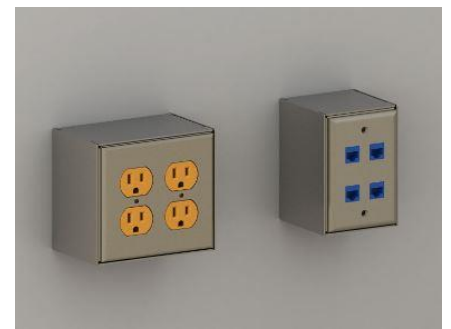
[Enclosures for Touchscreen, Monitors and Thin Clients](#)



[Back Of Screen VESA Mounts for Controllers, Thin Clients, Bump Bars, Tap+ Touch + EMV Readers](#)



[Stainless Steel Wireways](#)



[Stainless Steel Power and Data Outlet Monuments](#)

### Interactive Catalog of Product Sub Groups

There are many individual products included in the various product sub groups featured on these pages.

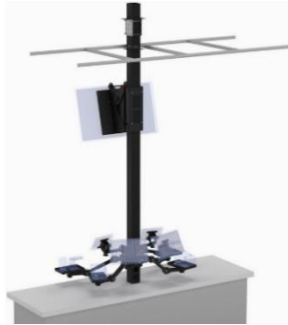
Click on the images or descriptions to visit the individual product sub group pages on our website.

For Information about individual products; click on the "Product Attachments" tab on each of the individual product pages.

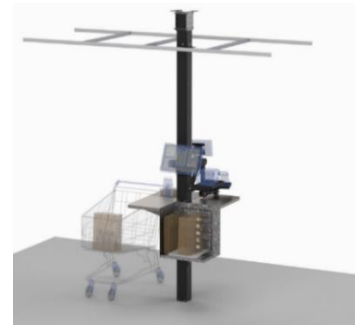
[Practical Quality Systems Home Page](#)



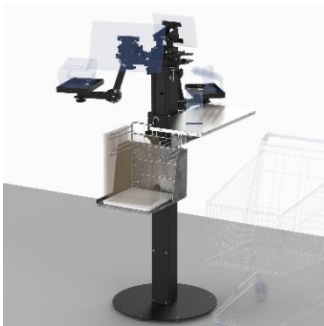
[Movable Countertop POS Stands](#)



[Direct Mount Countertop POS Stands](#)



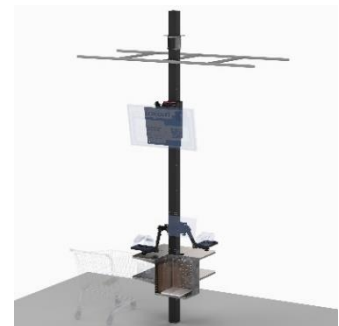
[POS Cashier Pole Stands](#)



[POS Cashier Floor Stands](#)



[POS Self-Check Out Kiosk Floor Stands](#)



[POS Self-Check Out Kiosk Pole Stands](#)



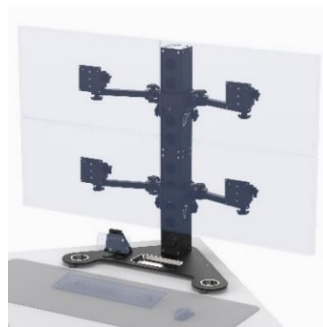
[Take Out Pickup Pole Stands](#)



[Take Out Pickup Floor Stands](#)



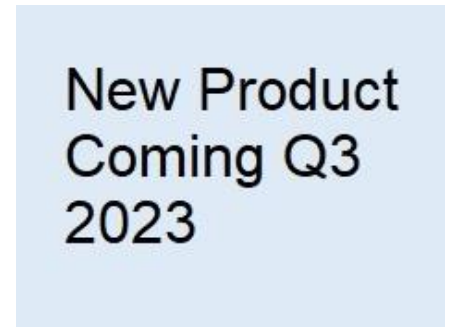
[Information Kiosk Floor Stands](#)



[Desktop Multi-Screen Pedestal Stands](#)



[4X4 Pole Clamp on Mounts](#)



[Mobile Cashier Stands](#)

### Interactive Catalog of Product Sub Groups

There are many individual products included in the various product sub groups featured on these pages.

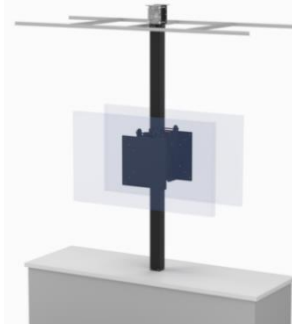
Click on the images or descriptions to visit the individual product sub group pages on our website.

For Information about individual products; click on the "Product Attachments" tab on each of the individual product pages.

#### [Practical Quality Systems Home Page](#)

New Product  
Coming Q3  
2023

Mobile Self-Check Out Stands



[Digital Signage Pole Stands](#)

New Product  
Coming Q3  
2023

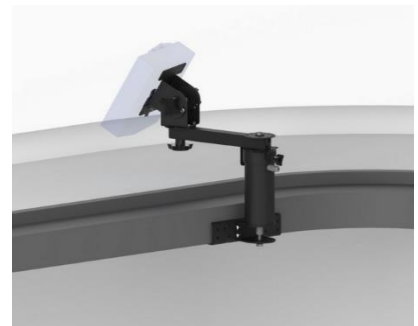
Stationary Podiums

New Product  
Coming Q3  
2023

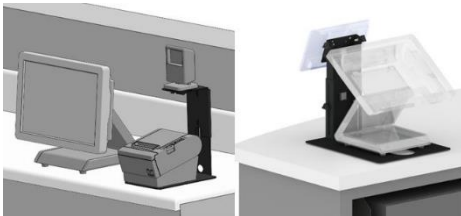
Stationary Podiums with Ceiling Feed Pole

New Product  
Coming Q3  
2023

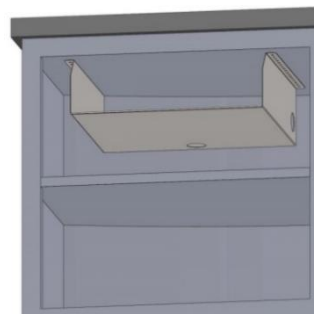
Mobile Podiums



[Ingenico Lane Reader Mounting Systems](#)



[Other Counter Top Mounts](#)



[Cash Drawer Mounting Solutions](#)