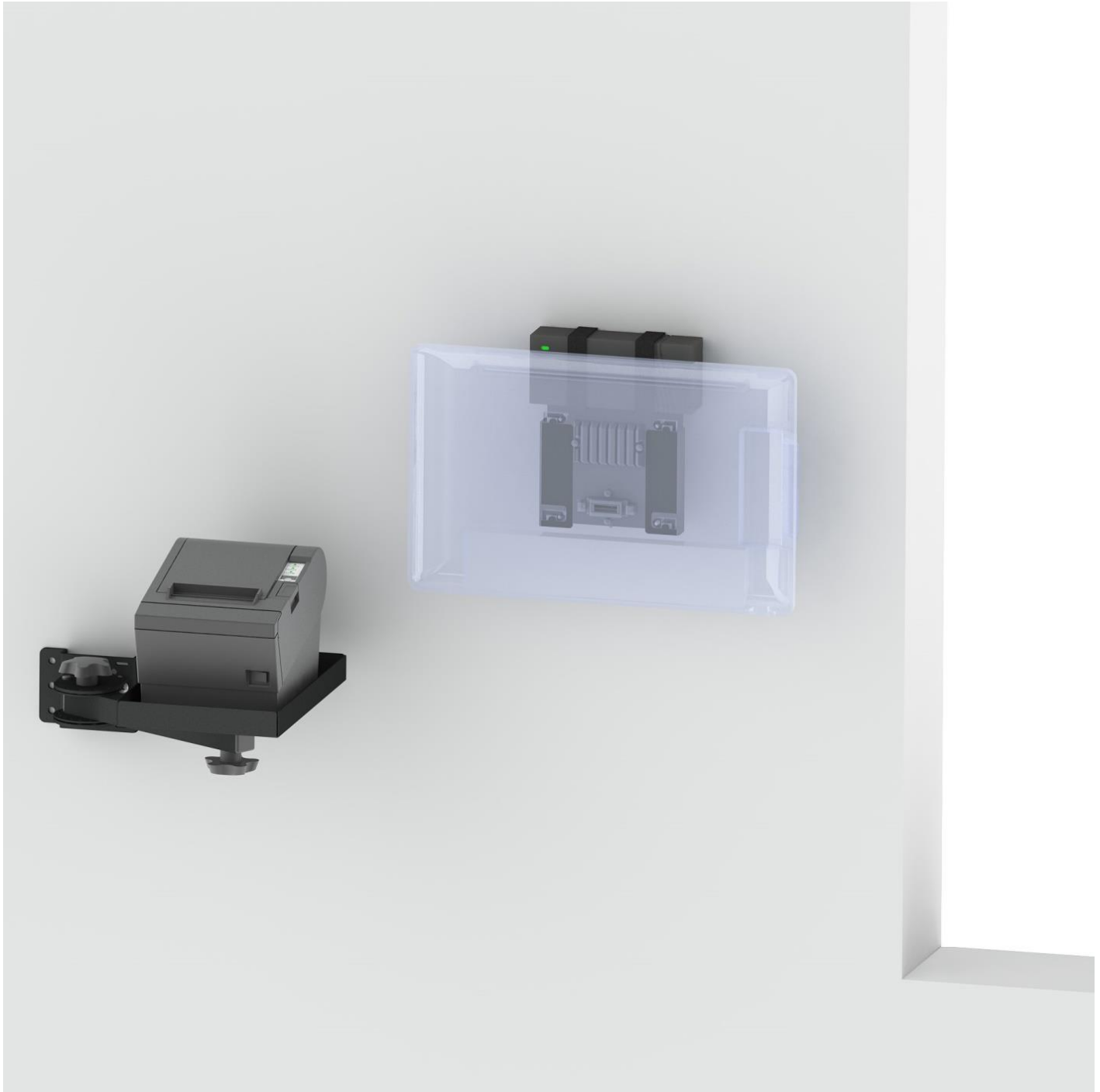
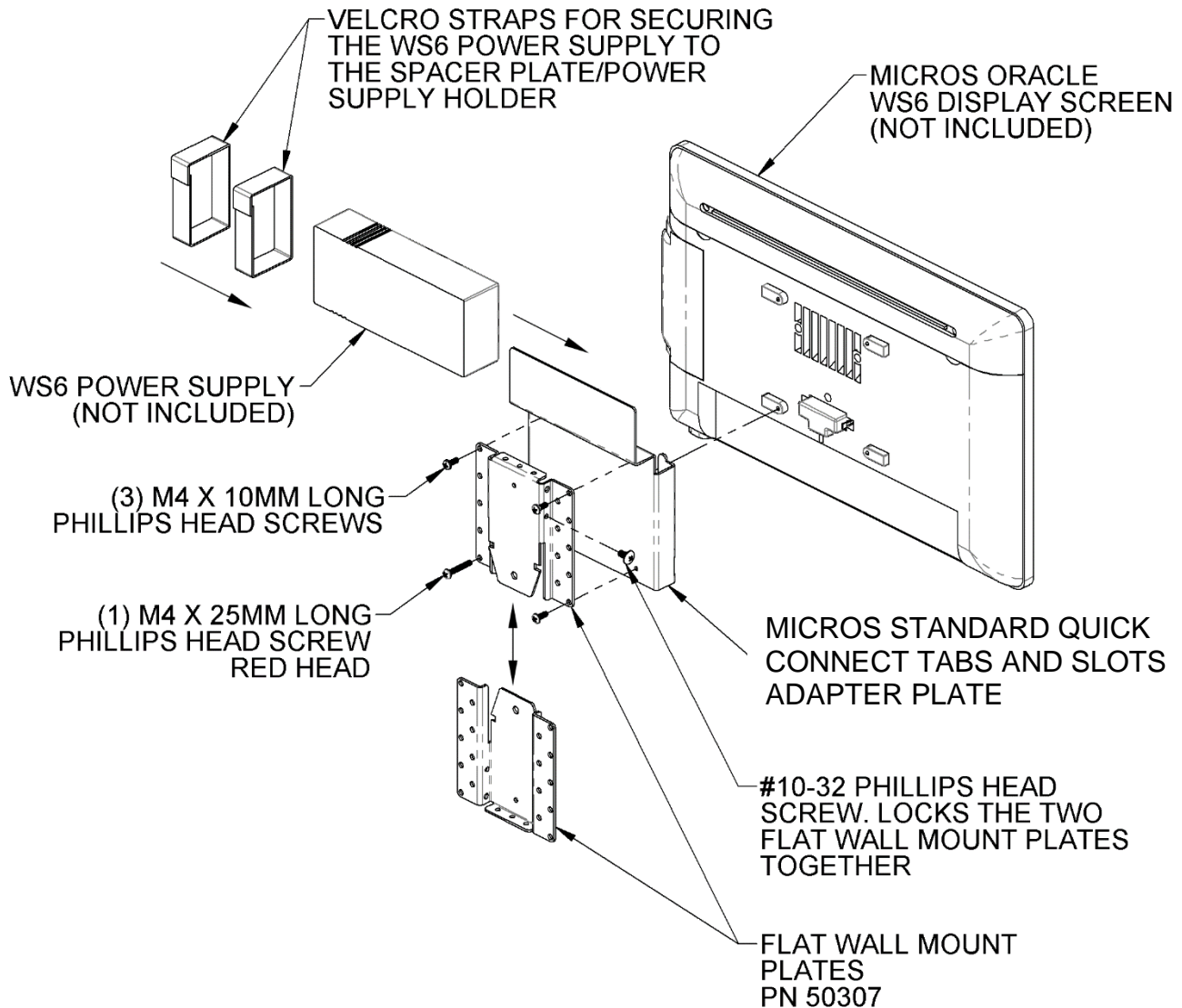


PQS

PRACTICAL QUALITY SYSTEMS
Fast Custom Manufacturing - Nationwide Installation Services

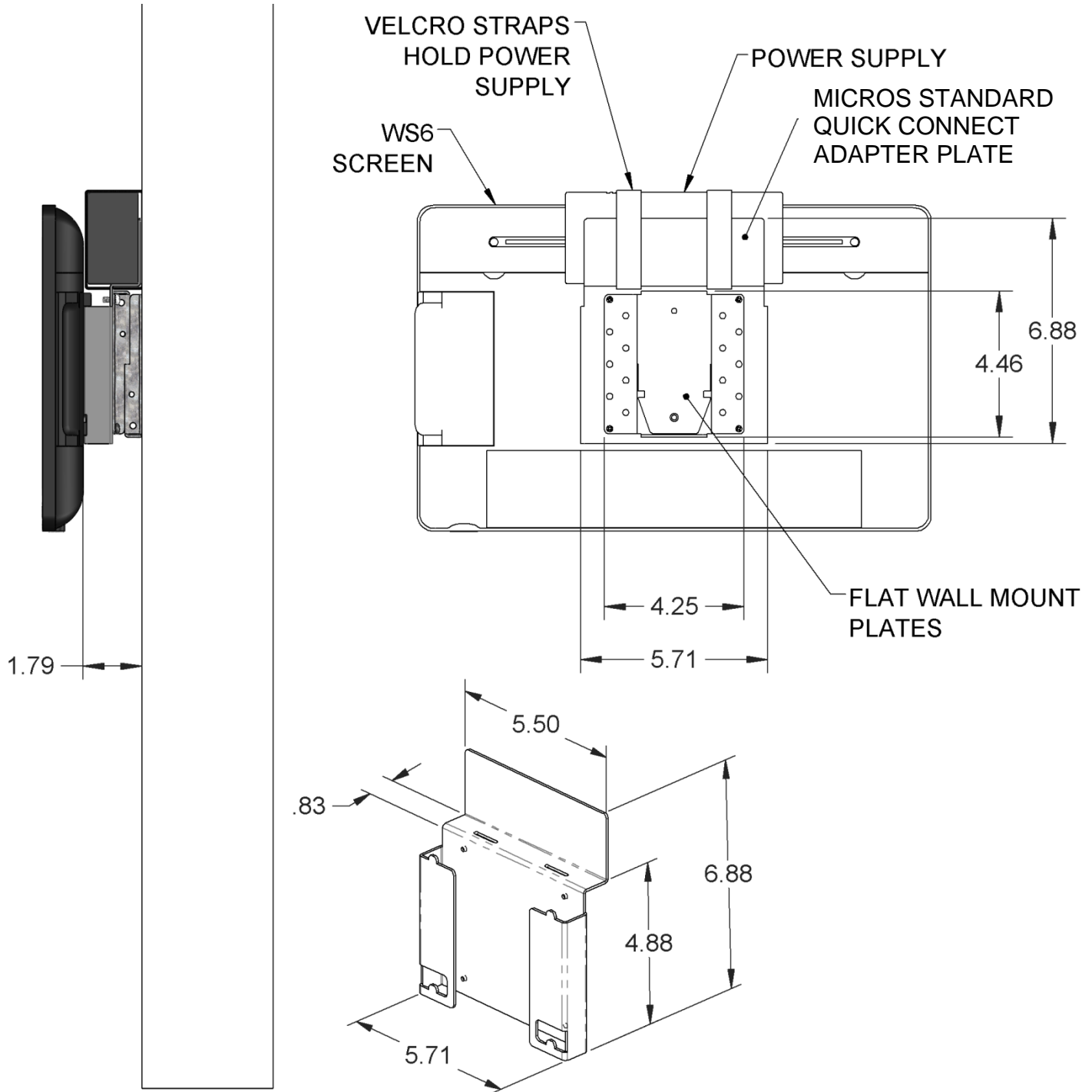


Terminal and printer are not included



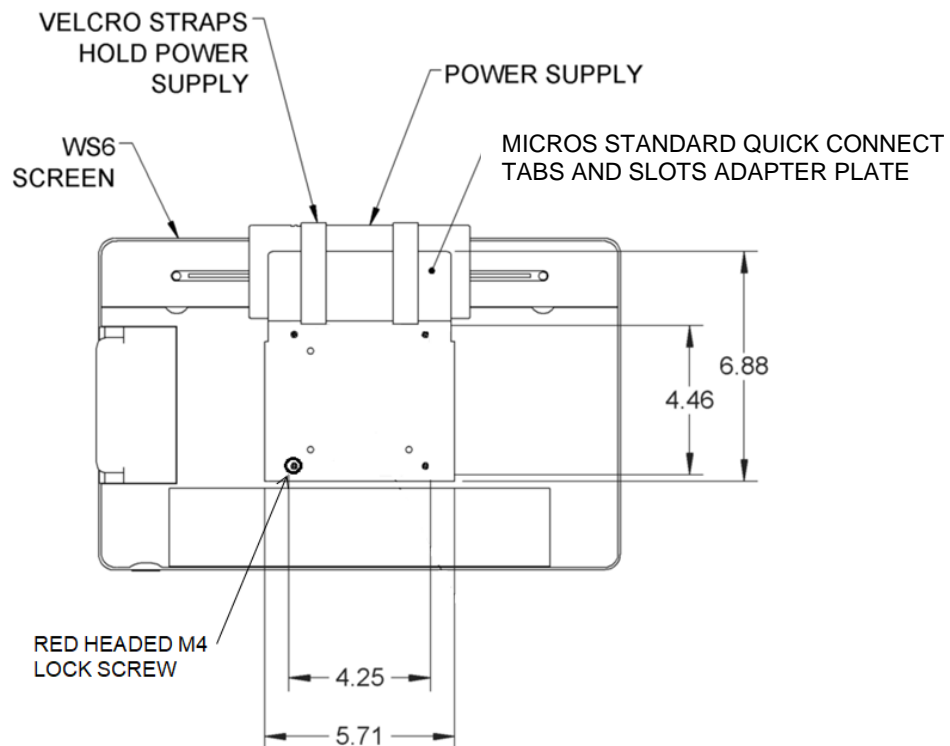
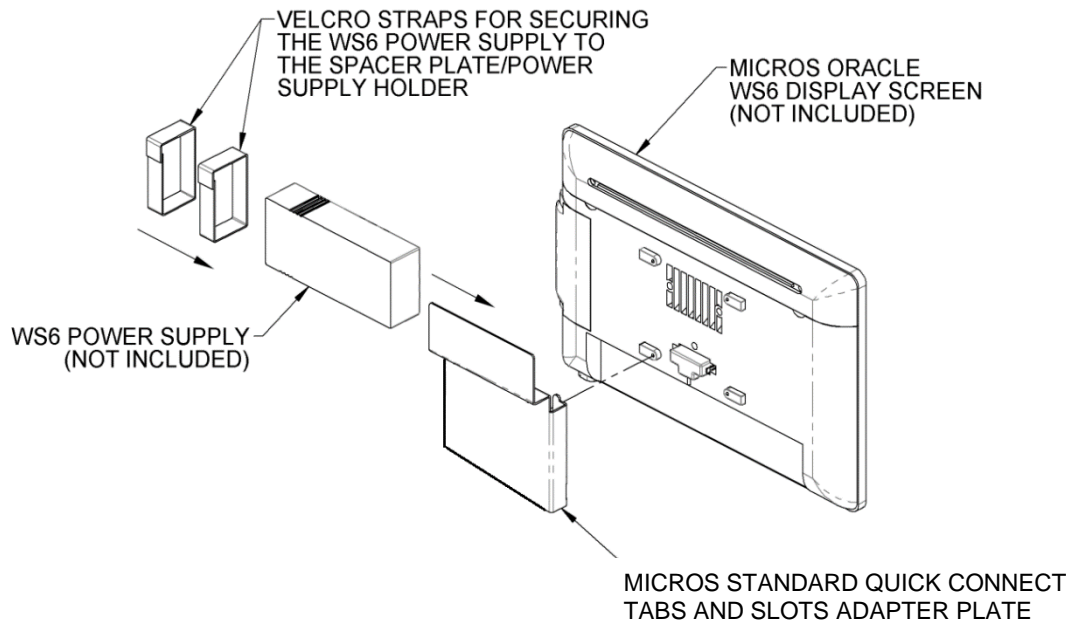
General Features

- One of these wall mounts supports all Oracle MICROS terminals with the MICROS Quick Connect tabs and slots mounting standard, the other wall mount supports a standard POS printer for Point of Sale / POS, Kitchen Display Systems / KDS in commercial kitchens, retail, restaurants, offices, industry, shops, medical, maritime, schools, laboratory and many other applications.
- Both of these mounting systems support up to 15 lbs.
- Includes flat wall mount; PN 80910-GAL-MICROS with galvanized mounting plates and a printer wall mount with adjustable arm PN 80002
- Visit kitchendisplaysystems.com for a free, easy to understand tutorial that covers all aspects of Kitchen Display Systems knowledge!
- For more information on the individual components included in this package please refer to the assembly sketches in this document and the downloadable product information sheets available on our website for each of the product pages for each part number.



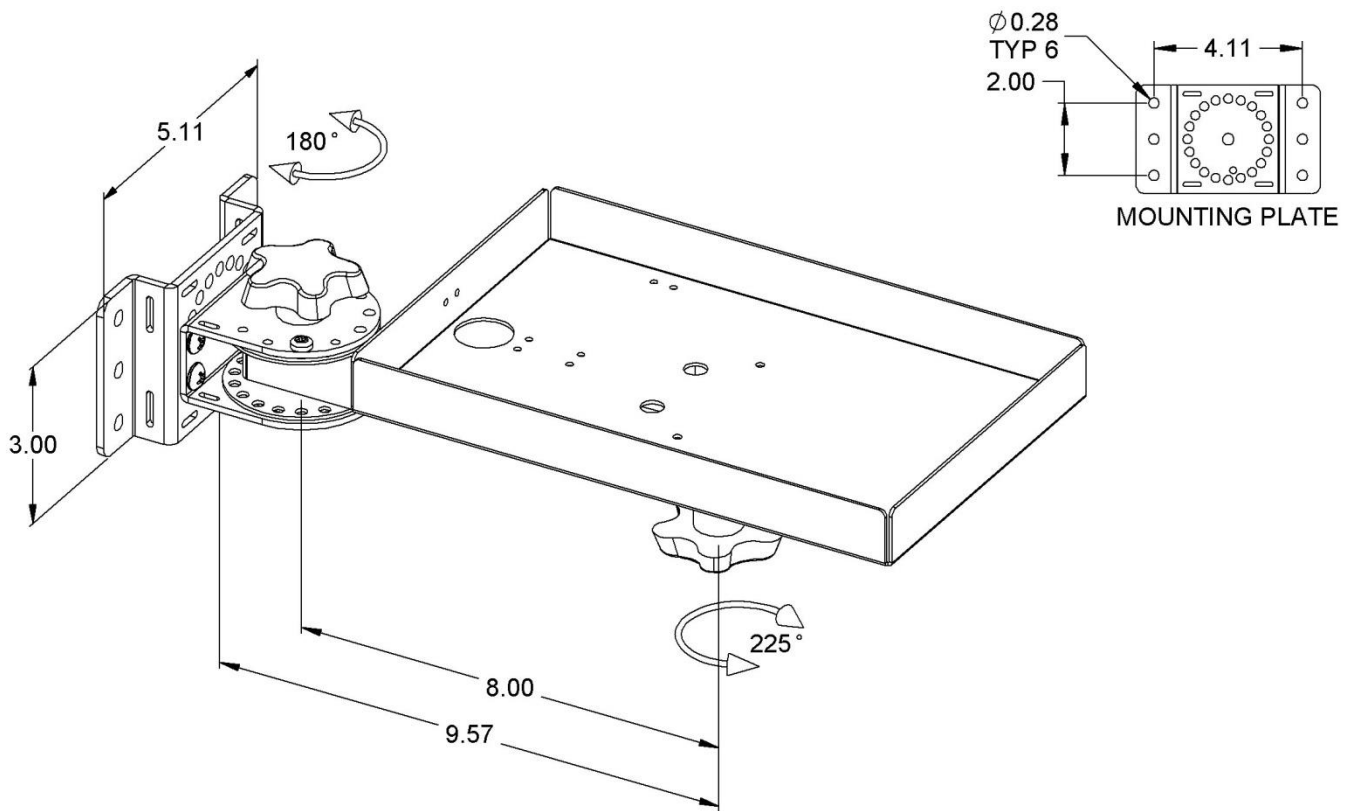
We believe in ethical SEO relevancy; the following section was included to assist the all-knowing algorithms in locating this page; however, some humans like it too.

- MICROS Wall mount, MICROS Wall mounting bracket, MICROS Wall mount bracket, MICROS Terminal Wall mount, MICROS Terminal Wall mounting bracket, MICROS Terminal Wall mount bracket.
- MICROS Point of Sale terminal Wall mount, MICROS KDS Wall mount, MICROS KDS Wall mounting bracket, MICROS KDS Wall mount bracket, MICROS Kitchen Display System Wall mount.



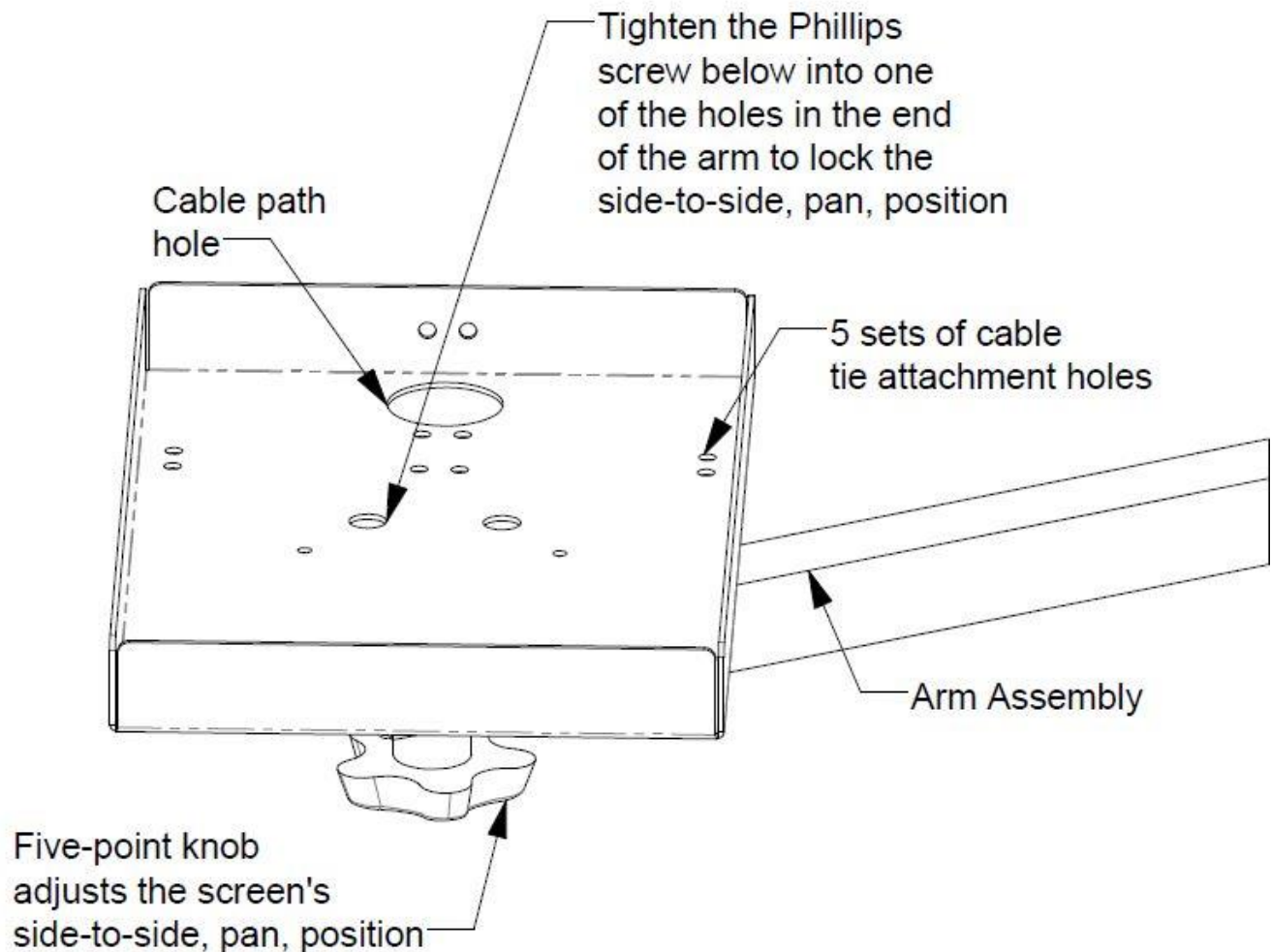
Install the Oracle MICROS External Power Supply PN 400351-038-PT or other model on the power supply holder and secure with the hook and loop straps.

Once the four tabs on the Micros compatible adapter plate are properly inserted into the four slots on the back of the terminal; tighten the red headed lock screw to secure the WS6 or other terminal to the adapter plate.



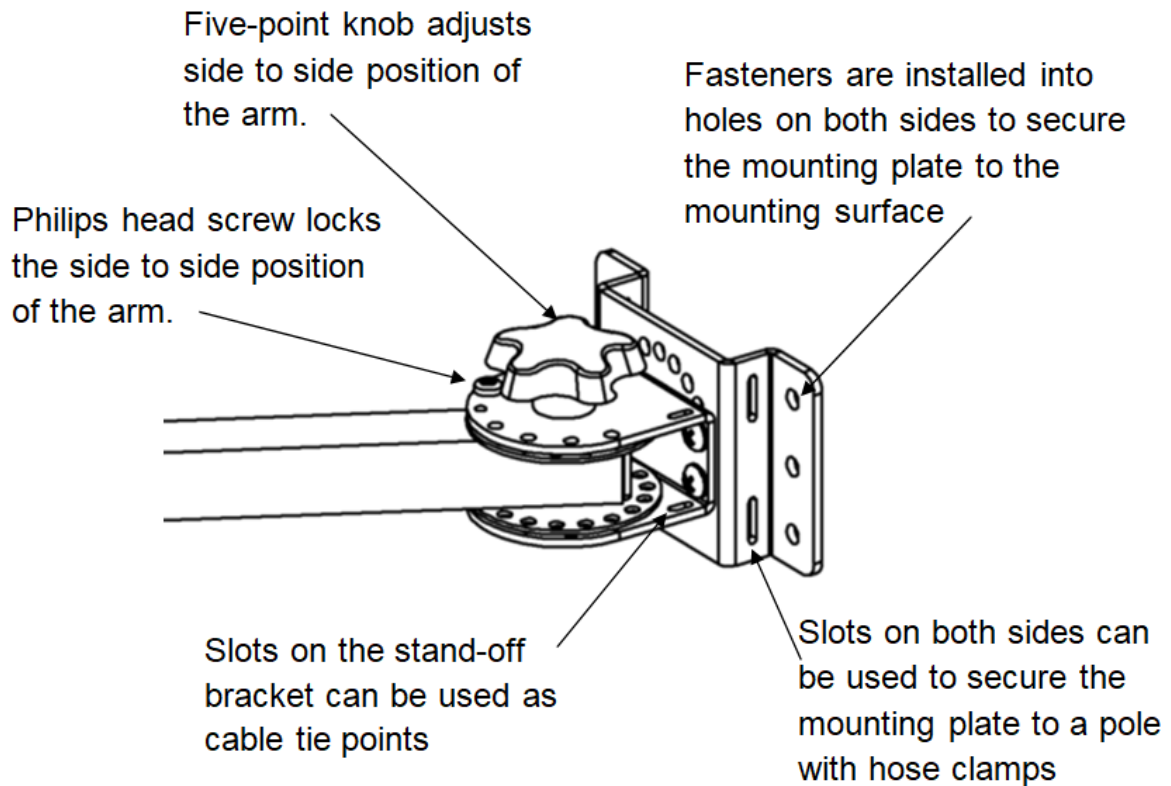
General Features

- This Universal printer mounting system supports most printers for use in commercial kitchens, retail, restaurants, offices, industry, shops, medical, maritime, schools, laboratory and many other applications.
- This assembly includes a wall mounting plate with a with a standoff bracket that allows the arm and printer tray to travel horizontally side to side from the wall surface allowing a wide range of positioning options.
- When correctly installed this assembly will support up to 15 pounds on each arm.
- The major components of this assembly are made of steel and are finished in a durable, black, low gloss, micro wrinkle, powder coat that resists fingerprints. Custom color options are available with quantity orders.
- Visit kitchendisplaysystems.com for a free, easy to understand tutorial that covers all aspects of Kitchen Display Systems knowledge!
- For more information on the individual components included in this package please refer to the assembly sketches in this document and the downloadable product information sheets available on our website for each of the product pages for each part number.



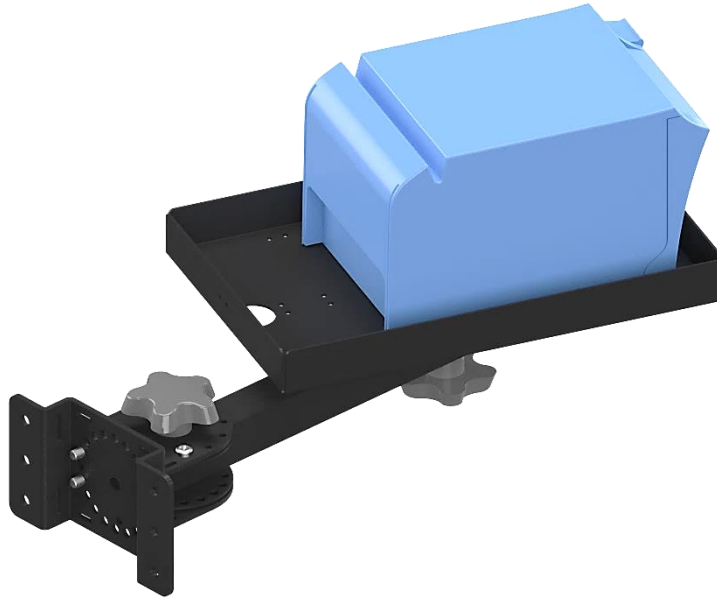
Flat Printer Tray on an Adjustable Arm

- A universal mount that works with most POS printers.
- The interior dimensions of the Flat Printer Tray are 6½" W X 10¼" L X 1" D.
- Includes a 1¼" diameter hole on one end for routing the power and data cables below the tray if desired.
- Includes multiple sets of tie point holes for inserting cable ties to secure the power and data cables if desired.
- Tightening the five- point knob below the end of the Arm applies variable resistance to allow adjustment of the side-to-side pan position of the Tray. A 10-32 Phillips head screw in one of the center holes can be tightened into one of the holes on the end of the arm to permanently secure the side-to-side pan position.



Single Wall Mounting Plate with Standoff Bracket and Arm

- The Standoff bracket attaches the arm to the mounting plate and allows it to travel horizontally allowing a wide range side to side positioning options.
- Attach the mounting plate to the Wall or other flat vertical surface with appropriate fasteners.
- Note that the Standoff bracket and arm can be attached to the mounting plate with the mounting plate in either vertical or horizontal orientation.
- Tightening the five- point knob on the top of the Standoff Bracket applies variable clutching resistance to allow adjustment of the side-to-side pan position of the Arm.
- To permanently lock the side-to-side pan position of the Arm; slightly loosen the 10-32 Phillips head screw on the top of the Standoff bracket, move the arm to the new desired permanent position; tighten the screw into one of the holes in the end of the arm to secure the new position.
- The Single mounting plate includes slots so that it can be attached to poles with compatible hose clamps.



Installation Tips for printer Mounting Systems

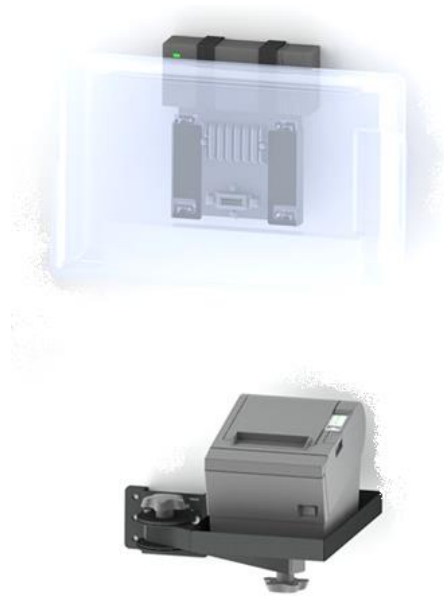
- 1. 1 Installation of this assembly must be performed by qualified persons.
- 1.2 Use fasteners that are appropriate for the materials and structure of the mounting surface.

Locating a Screen or Printer mount and examining the range of Motion of the arm(s).

- 1.1 Cut a section of blue painter's tape that is the same width as the mounting plate and keep this handy.
- 1.2 Carefully Lift the mounting system, and place the mounting plate in contact with the mounting surface at the proposed mounting location; then consider if the location of the MICROS compatible pan and tilt head or printer tray are accessible; but also not creating any conflicts with other items in the work area. If the system has movable arm(s) move these through their entire range of motion and look for conflicts. If conflicts are found; adjust the proposed location of the mounting plate as needed. When the optimum location is discovered; apply the tape to the spot on the mounting surface.
- 1.3 An alternate method that can be used as an aid in determining the best location for screens or printers is to make a cardboard cut out that has been shaped to closely match the overall dimensions of the intended screen or printer tray. (In a pinch you can also use a tray or a pizza box as a stand in for a screen.) Use these cardboard models as stand in for the actual equipment to assist in demonstrating the best positions of screens or printers.
- 1.4 If the screen or printer is supported by an arm; locate the pivot points of the arm and then carefully guide the MICROS compatible pan and tilt head or printer tray horizontally through the entire range of movement to determine optimum location for the mounting plate. When this location is discovered; apply the tape to the spot on the mounting surface.

We believe in ethical SEO relevancy; the following section was included to assist the all-knowing algorithms in locating this page; however, some humans like it too.

Printer wall bracket, printer wall mount, printer wall mount bracket, printer wall mounting bracket, Printer Tray, Printer Shelf, Kitchen printer, restaurant printer, POS printer, Point of Sale printer, Epson Printer shelf, Healthcare printer, Industrial printer, ID printer, Office printer, Manufacturing printer.



Partial List of compatible printers that will fit the interior dimensions of the Flat Printer Tray which measures; 6½" W X 10¼" L X 1" D.

Anser U2.
Brother QL 800, Brother PTP700.
Citizen CT-E351.
Clover P500, Clover Mini.
Custom America CT-E351.
Dymo LabelWriter 450, Dymo LabelWriter Wireless, Dymo LabelManager PnP.
Epson TM-T88V/VI, Epson TM- T20II, EpsonTM - L90, EpsonTM-U220 Type B & D.
POS-X Evo HiSpeed.
Rollo Printer.
Sato FX3-LX, Sato WS2.
Square Terminal.
Star Micronics mC-Print3.

Below is a partial list of Oracle MICROS compatible Terminals that use the MICROS Quick Connect tabs and slots mounting standard:

Oracle MICROS Workstation 625X.
Oracle MICROS Workstation 655X.
Oracle MICROS Workstation 6 POS Terminal.
Oracle MICROS Workstation 610.
Oracle MICROS Workstation 620.
Oracle MICROS Workstation 625.
Oracle MICROS Workstation 650.
Oracle MICROS Workstation 625.
Oracle MICROS Workstation 655.
Oracle MICROS Compact Workstation 310.
Oracle MICROS Express Station 4 Series.
Oracle MICROS Express Station 400.
Oracle MICROS Express Station 410.

Interactive Catalog of Mounting Systems for Workstation 610, Compact 310 & Express Station 400 + Printers

These mounts are included in the [Mounting Systems for Workstation 610, Compact 310 & Express Station 400 & POS Printers](#) product group pages on our website.

For more information; click on the images or descriptions to visit the individual product pages on our website.

PDF Product Information Sheets are available at the Product Attachments tab on each product page.

[Practical Quality Systems Home Page](#)



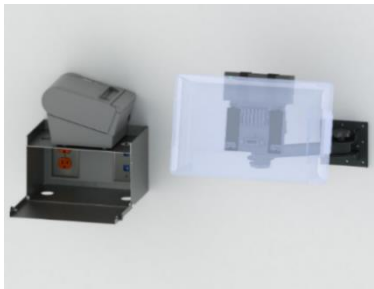
[PN 80003-MICROS - Wall Mount + two adjustable 8" arms + WS6 Pan - Tilt Head + printer tray + PS holder](#)



[PN 80014-MICROS - Countertop Stand for Oracle MICROS Workstation 6 and a Printer](#)



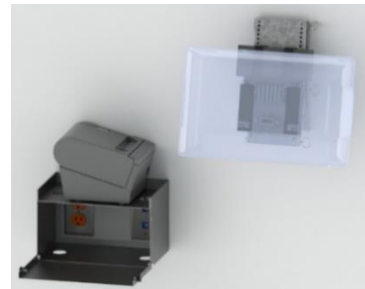
[PN 80247-MICROS - Under Counter Mount + two 3" risers + 2 adjustable 8" arms + WS6 Pan - Tilt Head + Flat Printer Tray + PS holder](#)



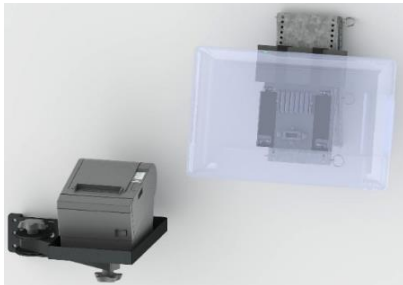
[PN 90500-MICROS - Oracle MICROS Workstation 6 wall mount + arm + printer shelf](#)



[PN 90510-MICROS - Oracle MICROS Workstation 6 flat wall mount and a printer shelf](#)



[PN 90520-MICROS - Oracle MICROS Workstation 6 tilting wall mount + printer shelf](#)



[PN 90530-MICROS - Oracle MICROS Workstation 6 tilting wall mount + printer tray with an arm](#)



[PN 90540-MICROS - Oracle MICROS Workstation 6 flat wall mount + printer tray with an arm](#)

Interactive Catalog of Product Sub Groups

There are many individual products included in the various product sub groups featured on these pages.

Click on the images or descriptions to visit the individual product sub group pages on our website.

For Information about individual products; click on the "Product Attachments" tab on each of the individual product pages.

[Practical Quality Systems Home Page](#)



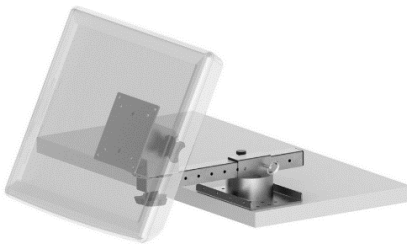
[Wall Mounts for Screens](#)



[Wall Mounts for POS Printers](#)



[Wall Mounts for Screens and POS Printers](#)



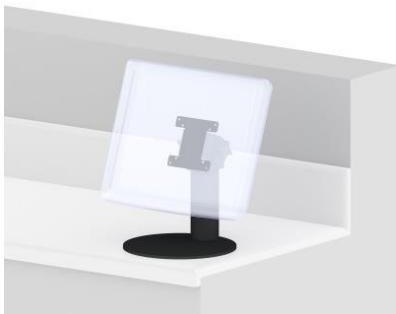
[Shelf Edge Mounts for Screens](#)



[Shelf Edge Mounts for POS Printers](#)



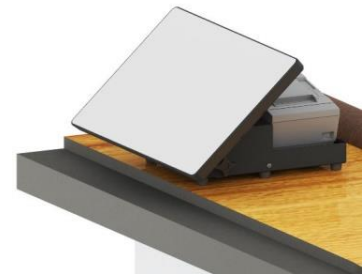
[Shelf Edge Mounts for Screens and POS Printers](#)



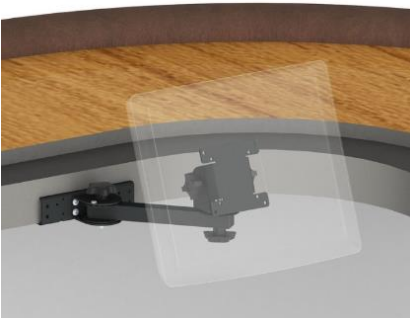
[Counter Top Mounts for Screens](#)



[Counter Top Mounts for POS Printers](#)



[Counter Top Mounts for Screens and POS Printers](#)



[Under Counter Mounts for Screens](#)



[Under Counter Mounts for POS Printers](#)



[Under Counter Mounts for Screens and POS Printers](#)

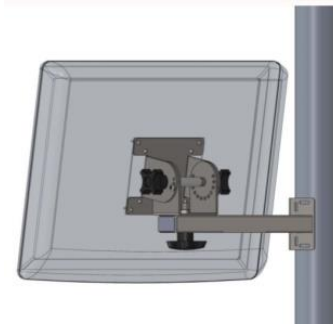
Interactive Catalog of Product Sub Groups

There are many individual products included in the various product sub groups featured on these pages.

Click on the images or descriptions to visit the individual product sub group pages on our website.

For Information about individual products; click on the "Product Attachments" tab on each of the individual product pages.

[Practical Quality Systems Home Page](#)



[Pole Mounts for Screens](#)



[Pole Mounts for POS Printers](#)



[Ceiling Mounts for Screens](#)



[Oracle MICROS Mounting Systems](#)



[NCR Aloha KDS Mounting Solutions](#)



[QSR KDS Mounting Solutions](#)



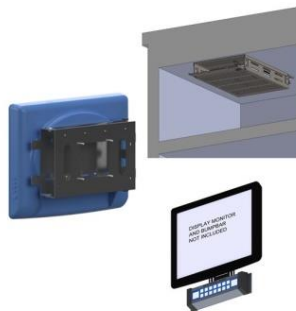
[Logic Controls Bematech KDS Mounting Solutions](#)



[Universal Kitchen Display System Mounting Packages](#)



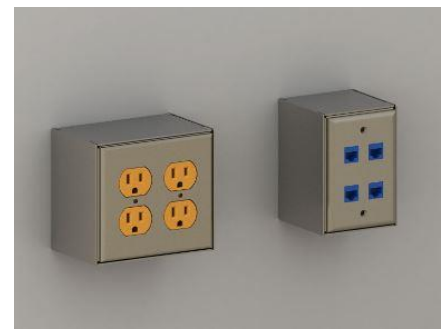
[Enclosures for Touchscreen, Monitors and Thin Clients](#)



[Back Of Screen VESA Mounts for Controllers, Thin Clients, Bump Bars, Tap+ Touch + EMV Readers](#)



[Stainless Steel Wireways](#)



[Stainless Steel Power and Data Outlet Monuments](#)

Interactive Catalog of Product Sub Groups

There are many individual products included in the various product sub groups featured on these pages.

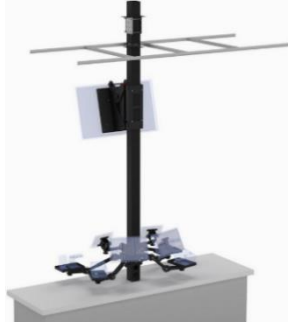
Click on the images or descriptions to visit the individual product sub group pages on our website.

For Information about individual products; click on the "Product Attachments" tab on each of the individual product pages.

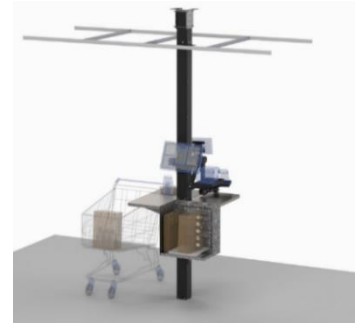
[Practical Quality Systems Home Page](#)



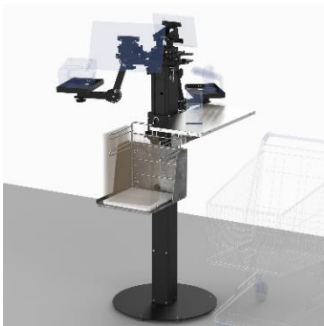
[Movable Countertop POS Stands](#)



[Direct Mount Countertop POS Stands](#)



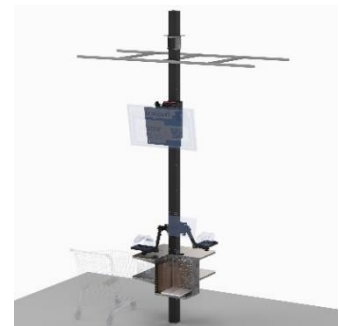
[POS Cashier Pole Stands](#)



[POS Cashier Floor Stands](#)



[POS Self-Check Out Kiosk Floor Stands](#)



[POS Self-Check Out Kiosk Pole Stands](#)



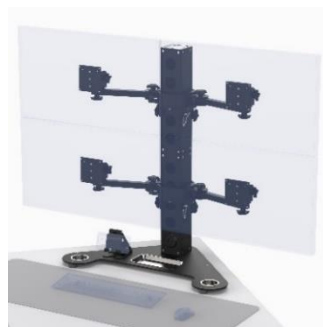
[Take Out Pickup Pole Stands](#)



[Take Out Pickup Floor Stands](#)



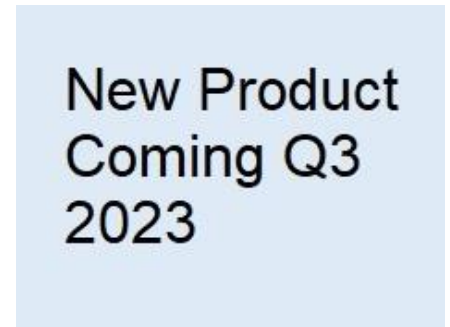
[Information Kiosk Floor Stands](#)



[Desktop Multi-Screen Pedestal Stands](#)



[4X4 Pole Clamp on Mounts](#)



[Mobile Cashier Stands](#)

Interactive Catalog of Product Sub Groups

There are many individual products included in the various product sub groups featured on these pages.

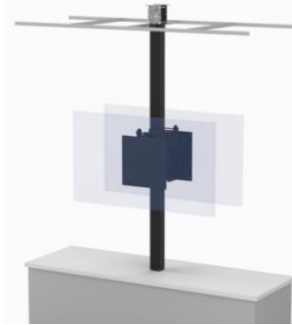
Click on the images or descriptions to visit the individual product sub group pages on our website.

For Information about individual products; click on the "Product Attachments" tab on each of the individual product pages.

[Practical Quality Systems Home Page](#)

New Product
Coming Q3
2023

Mobile Self-Check Out Stands



[Digital Signage Pole Stands](#)

New Product
Coming Q3
2023

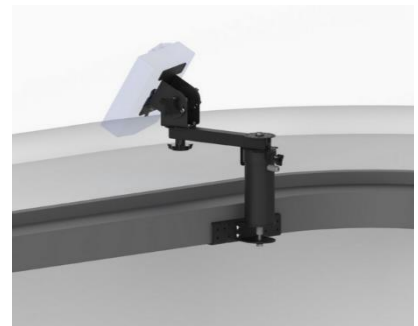
Stationary Podiums

New Product
Coming Q3
2023

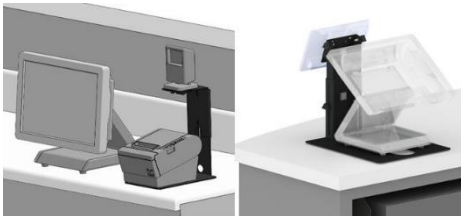
Stationary Podiums with Ceiling Feed Pole

New Product
Coming Q3
2023

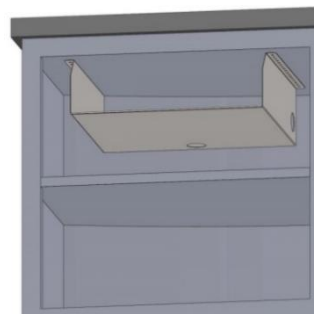
Mobile Podiums



[Ingenico Lane Reader Mounting Systems](#)



[Other Counter Top Mounts](#)



[Cash Drawer Mounting Solutions](#)