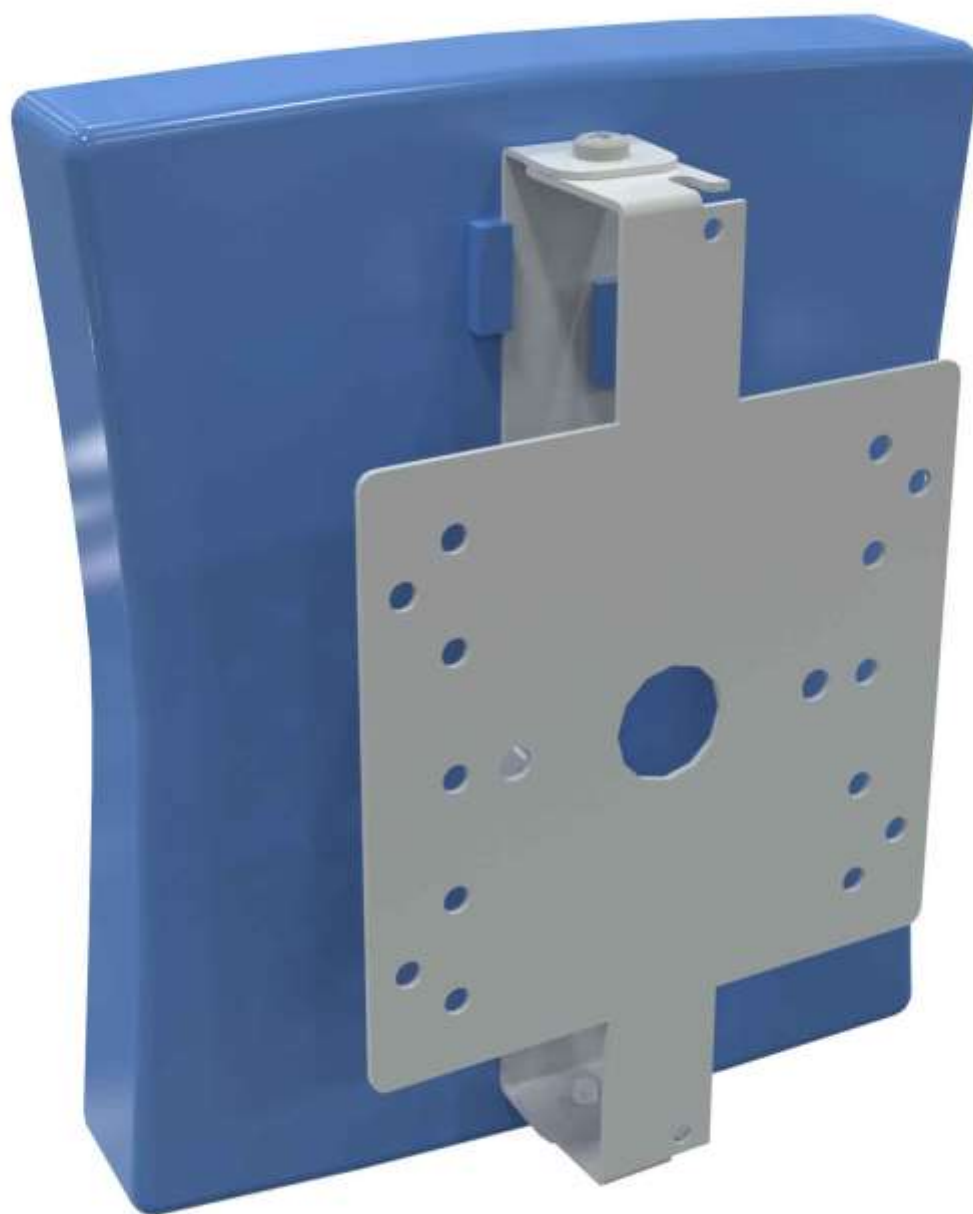


PQS

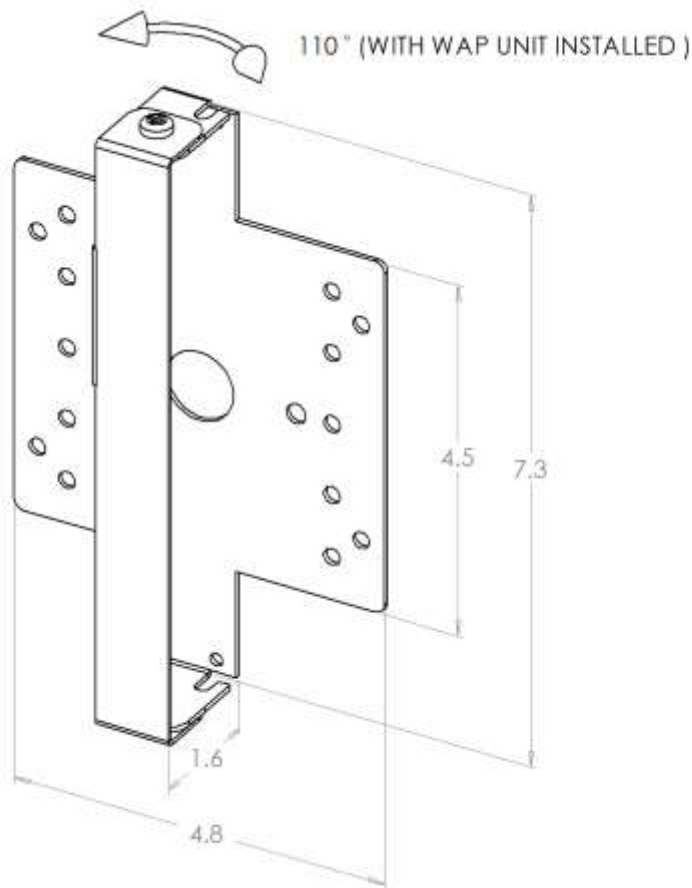
PRACTICAL QUALITY SYSTEMS

Fast Custom Manufacturing - Nationwide Installation Services

Symbol Wireless Access Point Universal Mount PN 80900



Symbol Wireless Access Point Universal Mount PN 80900



PRODUCT SPECIFICATIONS

General Features

- Features an integral Keystone port that accepts any standard data jack insert.
- When installed horizontally, the mount allows the Wireless Access Point to tilt up or down 30 degrees.
- Made entirely of galvanized steel to resist corrosion.

Mounting Features

- Attaches directly to any flat vertical or flat horizontal surface.
- Attaches to ANY Type of standard electrical junction box: single gang, double gang, 4S or 5S
- Attaches to any standard vertical suspended ceiling support wire.
- Attaches directly to any standard ½" conduit connector.
- Includes mounting holes for two standard "beam clamps" which can be added to permit the mount to be attached directly to any overhead beam.
- Attaches to the back of the Wireless Access Point unit without tools using the "TEE BAR" attachment points.