

# PQS

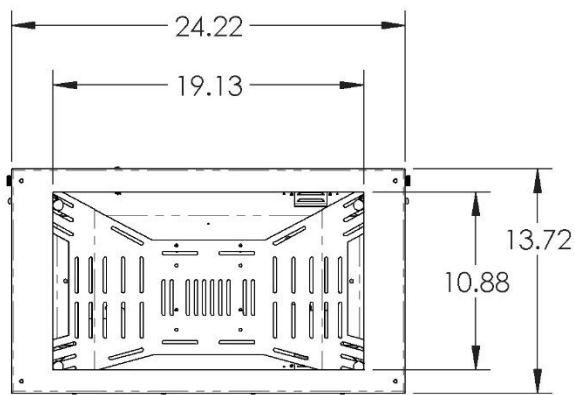
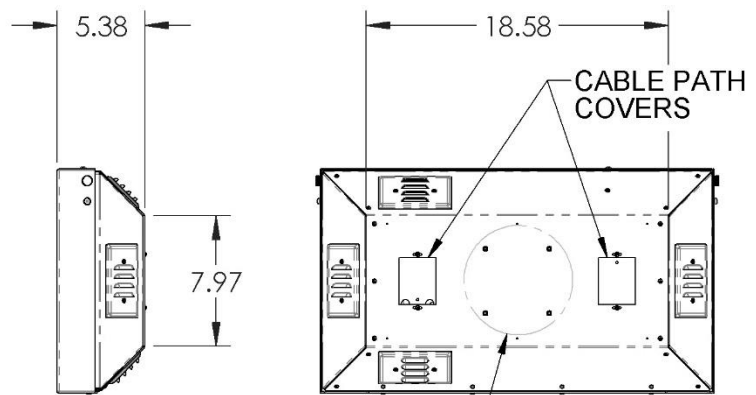
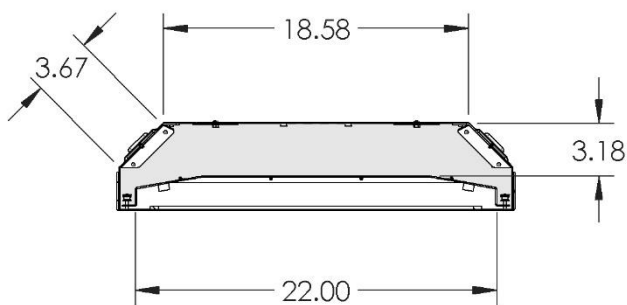
PRACTICAL QUALITY SYSTEMS  
*Fast Custom Manufacturing - Nationwide Installation Services*



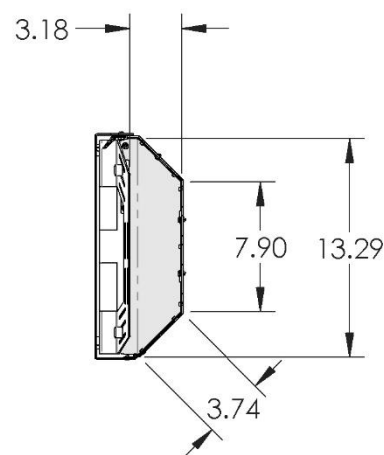
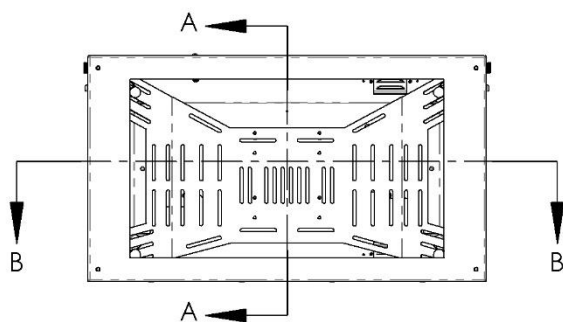
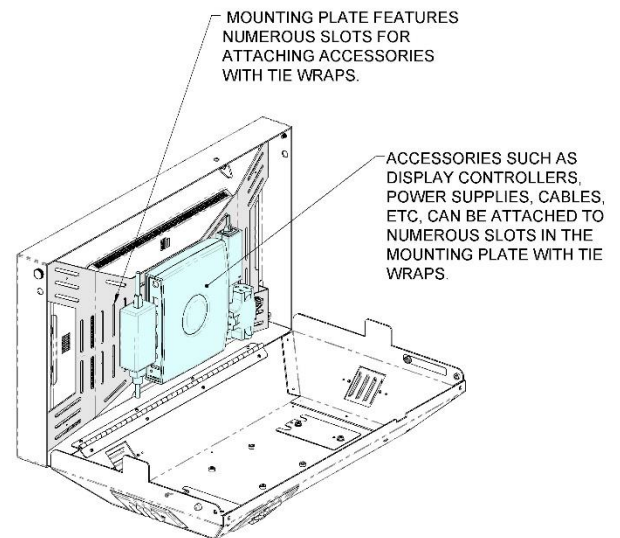
PN 80403-AL shown with a 22" ELO touchscreen and shelf/counter top mount PN 80131  
These items are not included.

**General Features**

- This enclosure is designed specifically for the Elo E107766, ELO 221L or ELO 22 I series touchscreens and is intended for Point of Sale / POS, Kitchen Display Systems / KDS in commercial kitchens, retail, restaurants, offices, industry, shops, medical, maritime, schools, laboratory and many other applications
- Meets NEMA Type 2 rating - Enclosures constructed for indoor use to provide a degree of protection to personnel against access to hazardous parts; to provide a degree of protection of the equipment inside the enclosure against ingress of solid foreign objects (falling dirt); and to provide a degree of protection with respect to harmful effects on the equipment due to the ingress of water (dripping and light splashing).
- Can be mounted in portrait or landscape orientation.
- No modification to the terminal's power cables, associated hardware or the terminal itself is required for installation.
- A heavy duty hinged front panel opens without tools and allows full access to the interior without removing the enclosure from the mounting system. Security screws are included and are to be used if your application requires controlled access to the inside of the enclosure.
- Includes a passive ventilation system. Four louvered vents allow air to enter the enclosure. In landscape orientation the louvers face downward to keep falling liquids and dust from entering.
- Close fitting neoprene gaskets surround the entire edge of the terminal's screen to seal it against liquid entry.
- Includes an internal mounting plate to hold power supplies, display controllers, and any extra cabling.

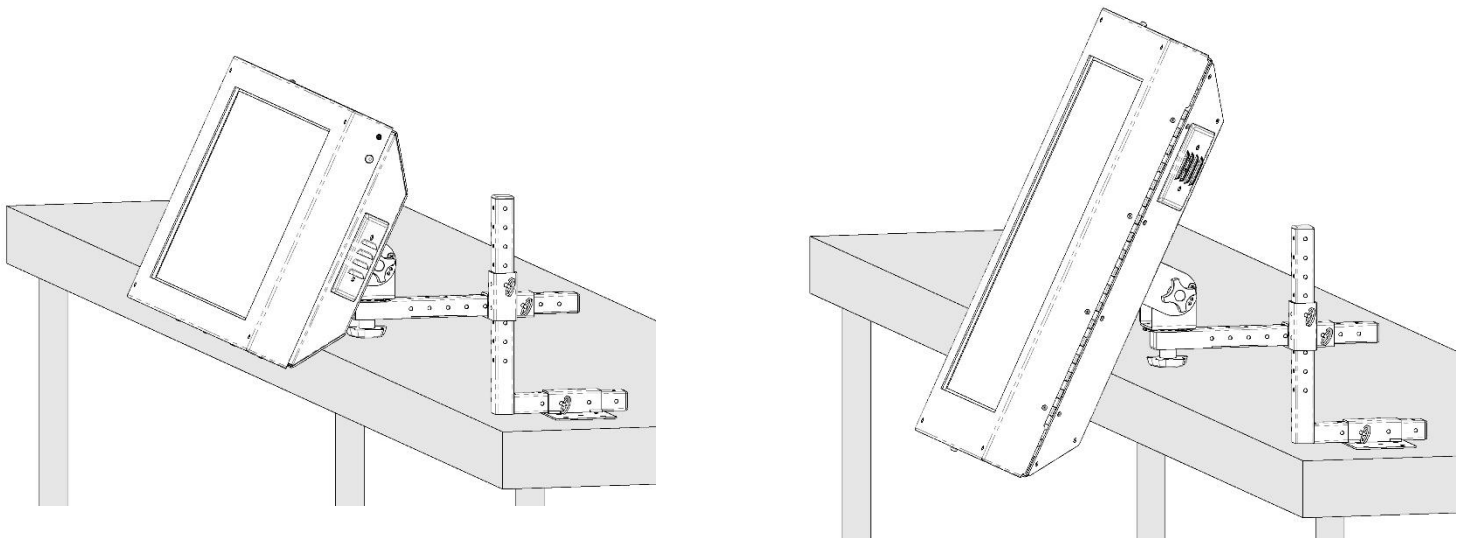
**Overall dimensions**100MM VESA  
MOUNTING PATTERN  
#10-32 THREADS

SECTION B-B

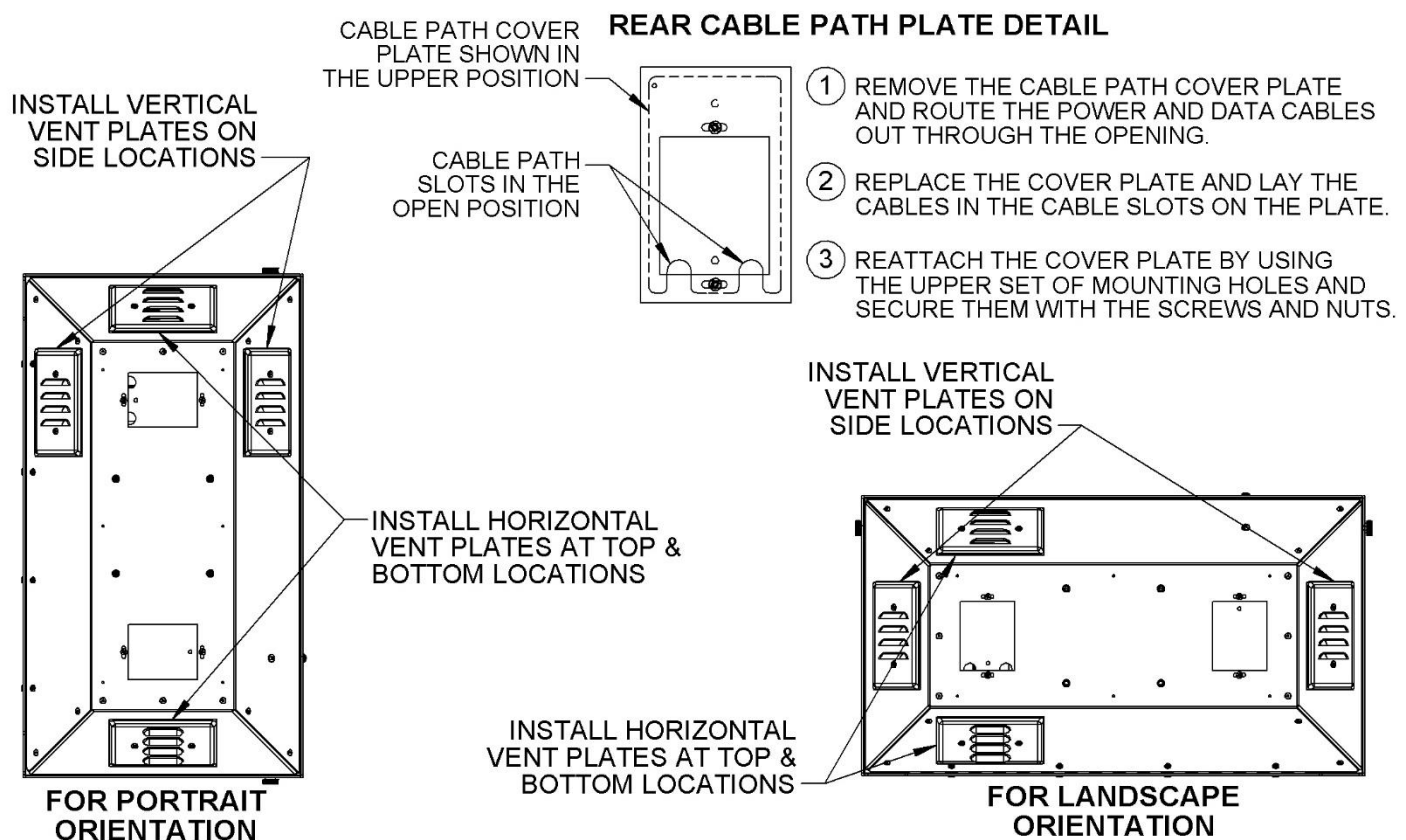


SECTION A-A

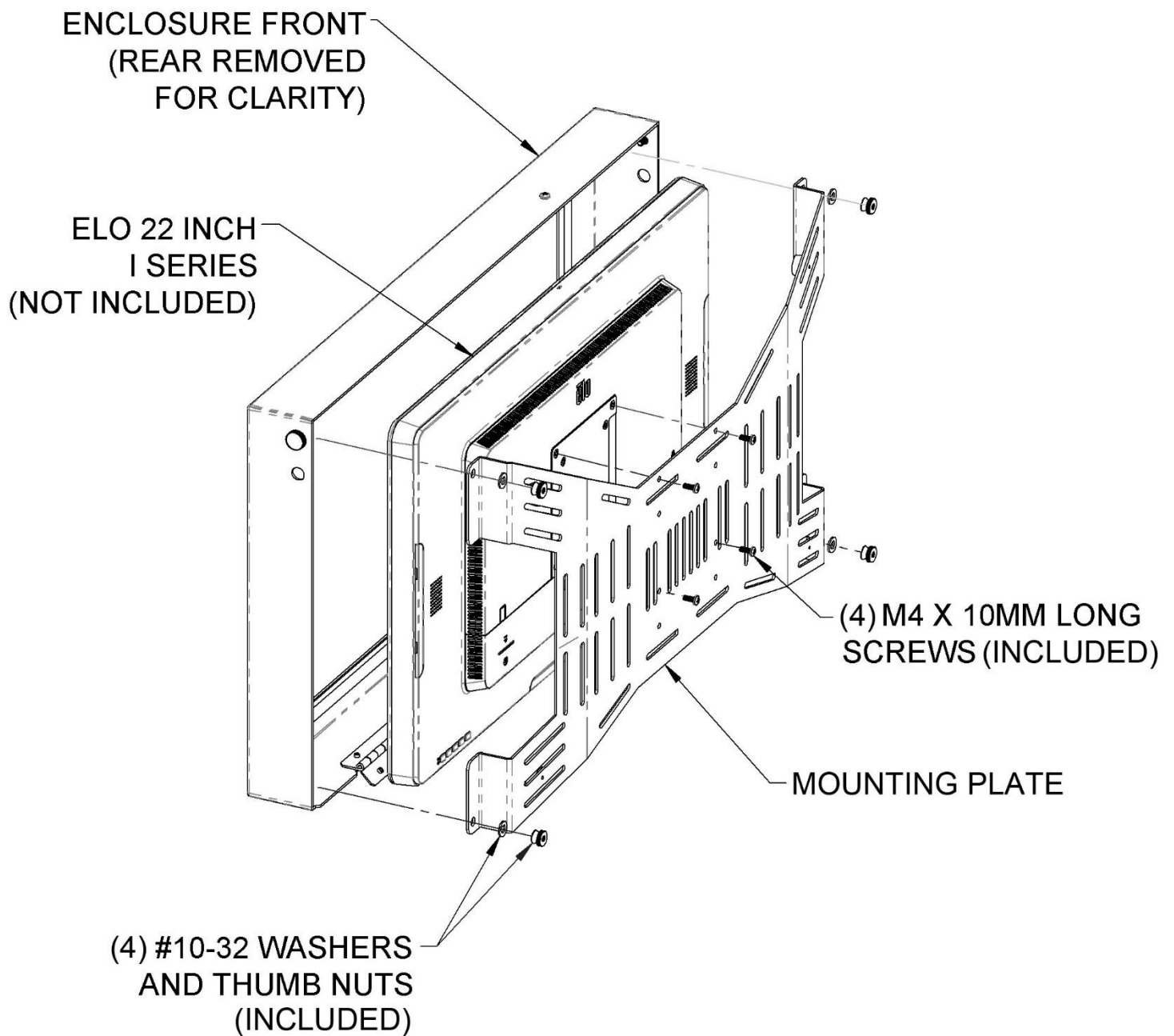
**Storage area in rear of enclosure shown in gray**



### **Enclosure can be mounted in landscape or portrait orientation**

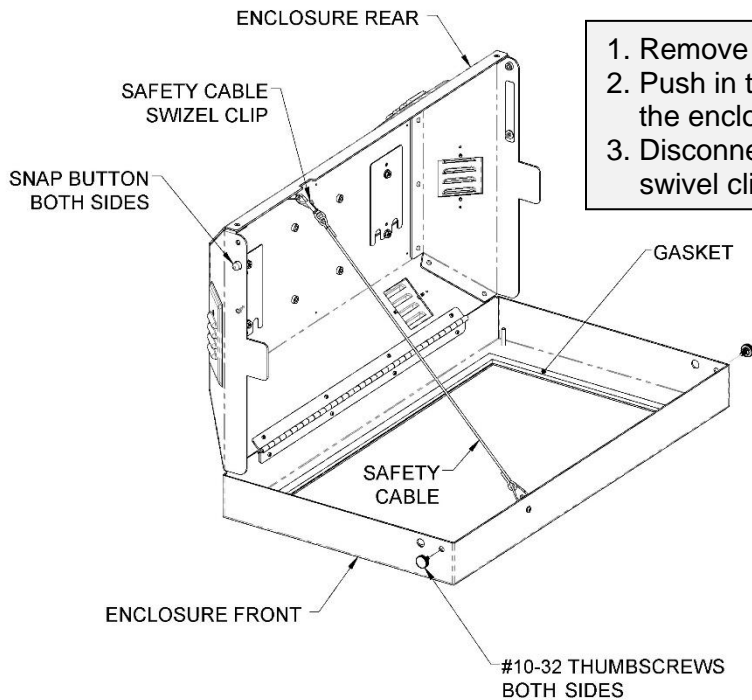


### **Vent plates can be oriented to optimize landscape or portrait mounting**

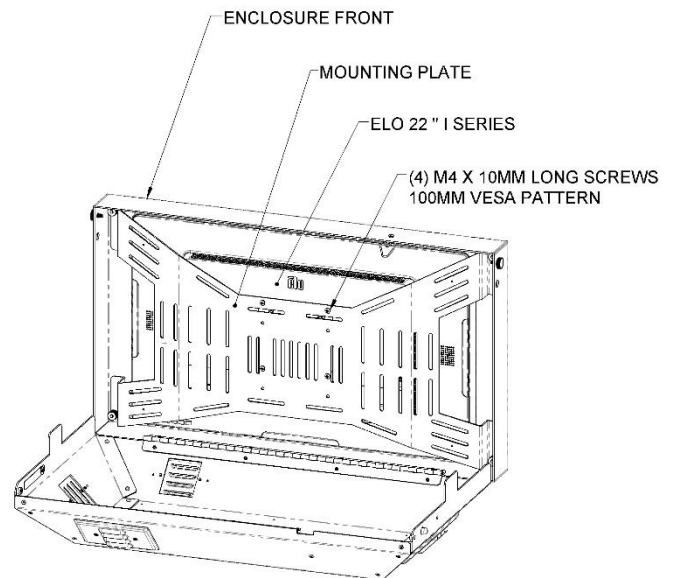
**Assembly for the ELO 22" I series**



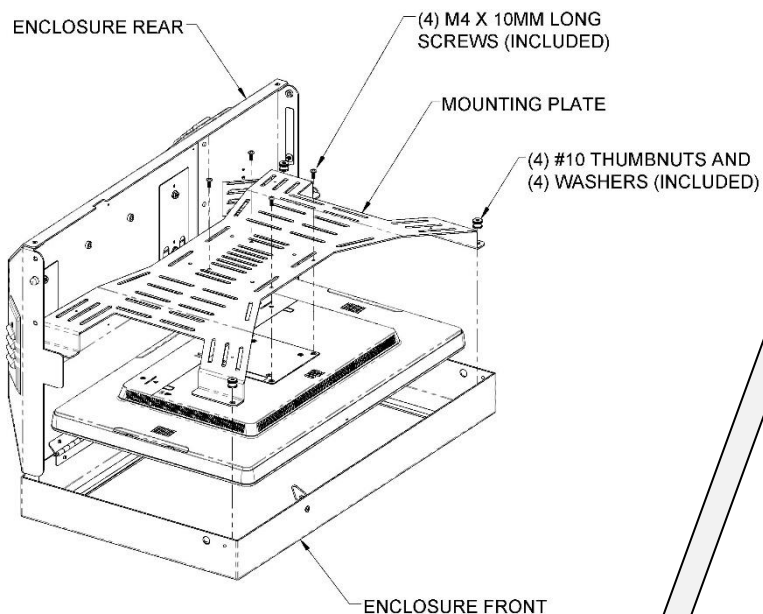
## Installation instructions for the ELO 22" I Series



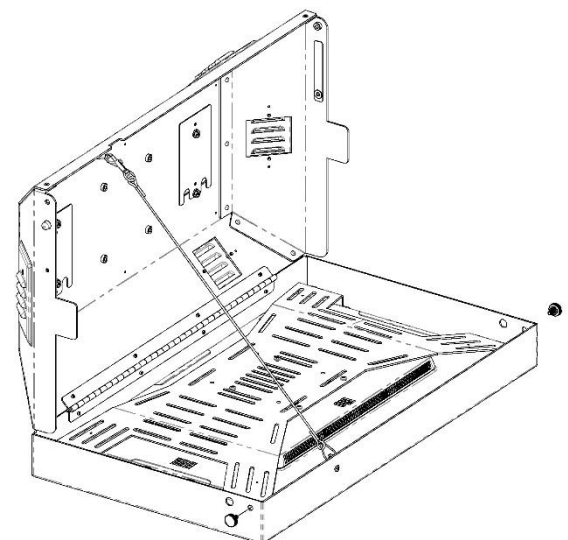
1. Remove the two #10 thumbscrews.
2. Push in the two snap buttons and open the enclosure.
3. Disconnect the safety cable using the swivel clip.



Note - Touchscreen, mounting plate and enclosure must be oriented as shown.

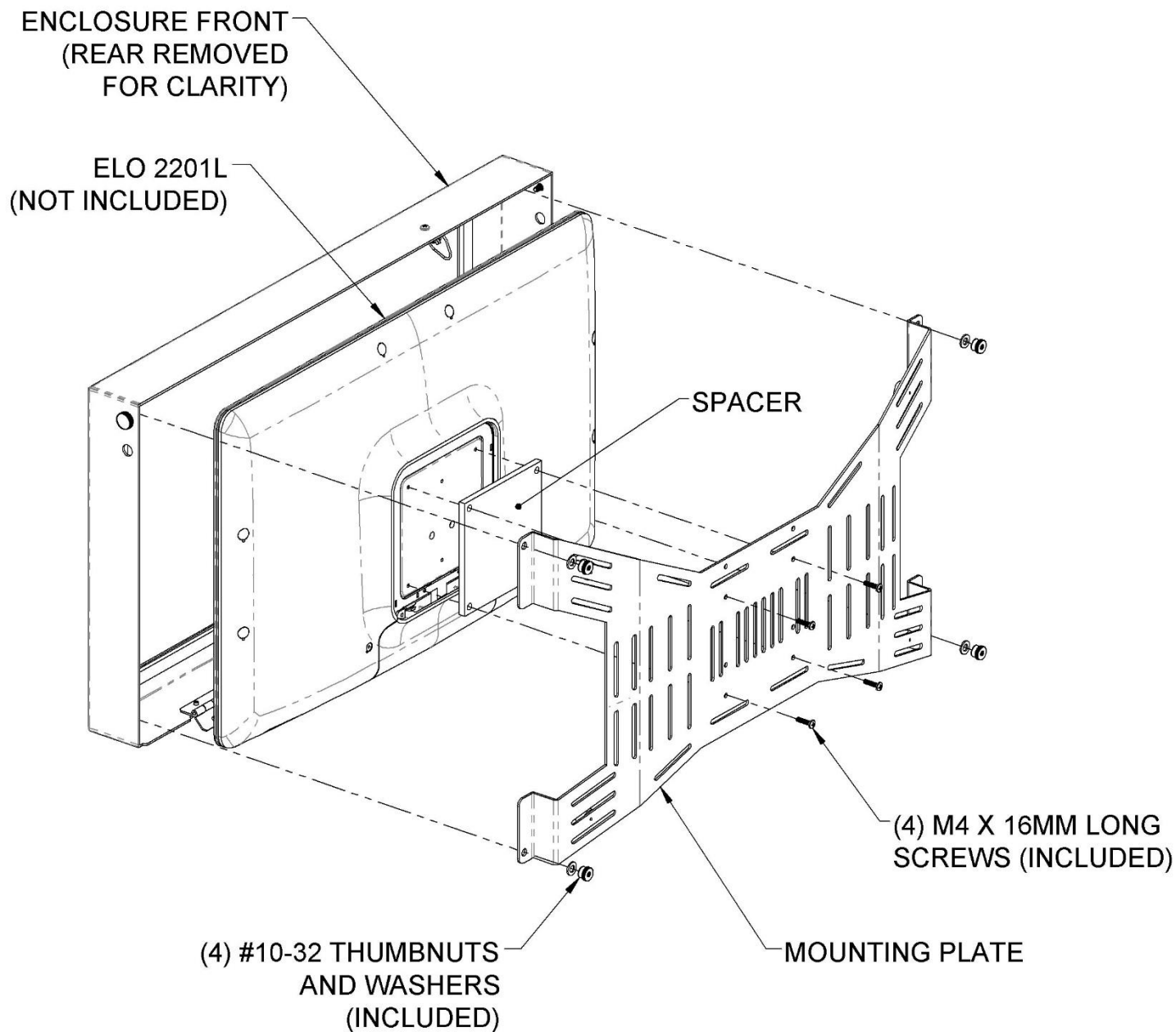


4. Place the ELO 22" I Series touchscreen into the enclosure.
5. Place the mounting plate over the touchscreen and secure the mounting plate to the 100mm VESA pattern in the touchscreen with (4) M4 X 10MM screws.
6. Secure the mounting plate to the enclosure with (4) thumbnuts and washers

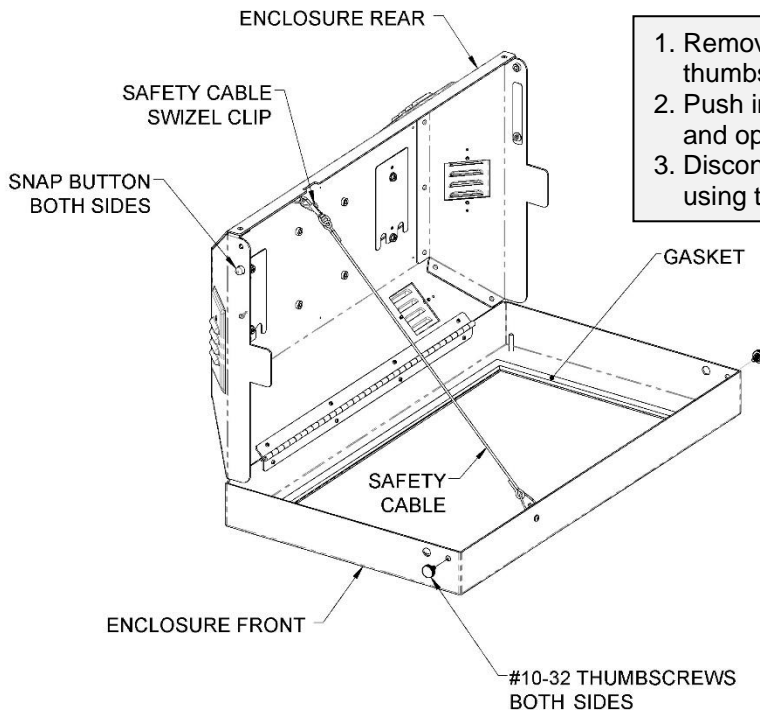


7. Re-attach safety cable.
8. Close enclosure using snap buttons.
9. Install the (2) #10 thumbscrews if required.

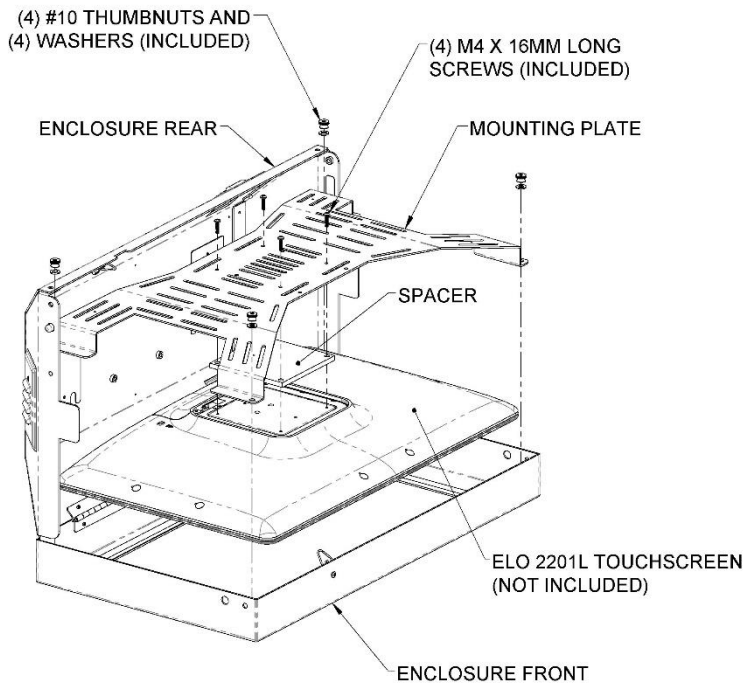
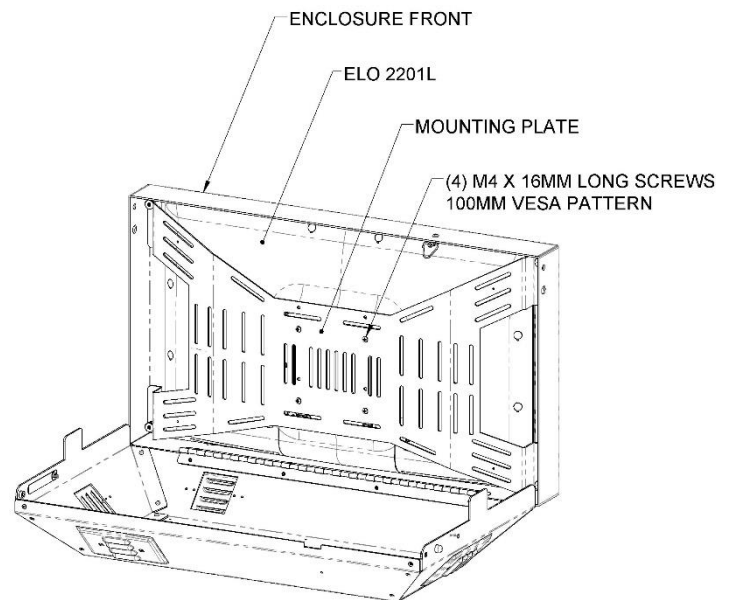
## Assembly for the ELO 2201L



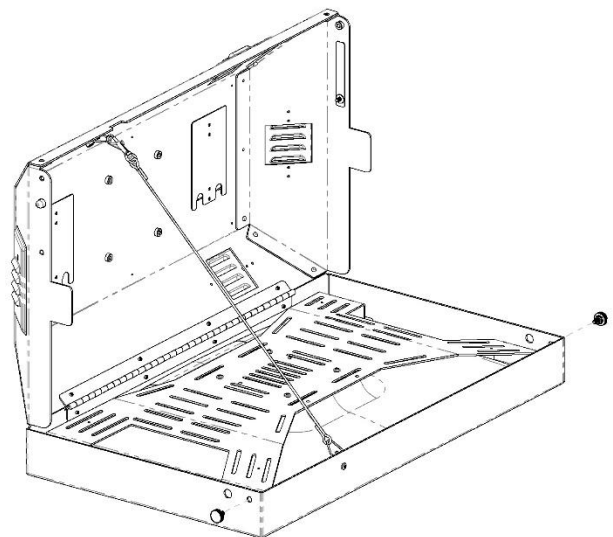
## Installation instructions for the ELO 2201L



1. Remove the two #10 thumbscrews.
2. Push in the two snap buttons and open the enclosure.
3. Disconnect the safety cable using the swivel clip.



Note – Touchscreen, mounting plate and enclosure must be oriented as shown.

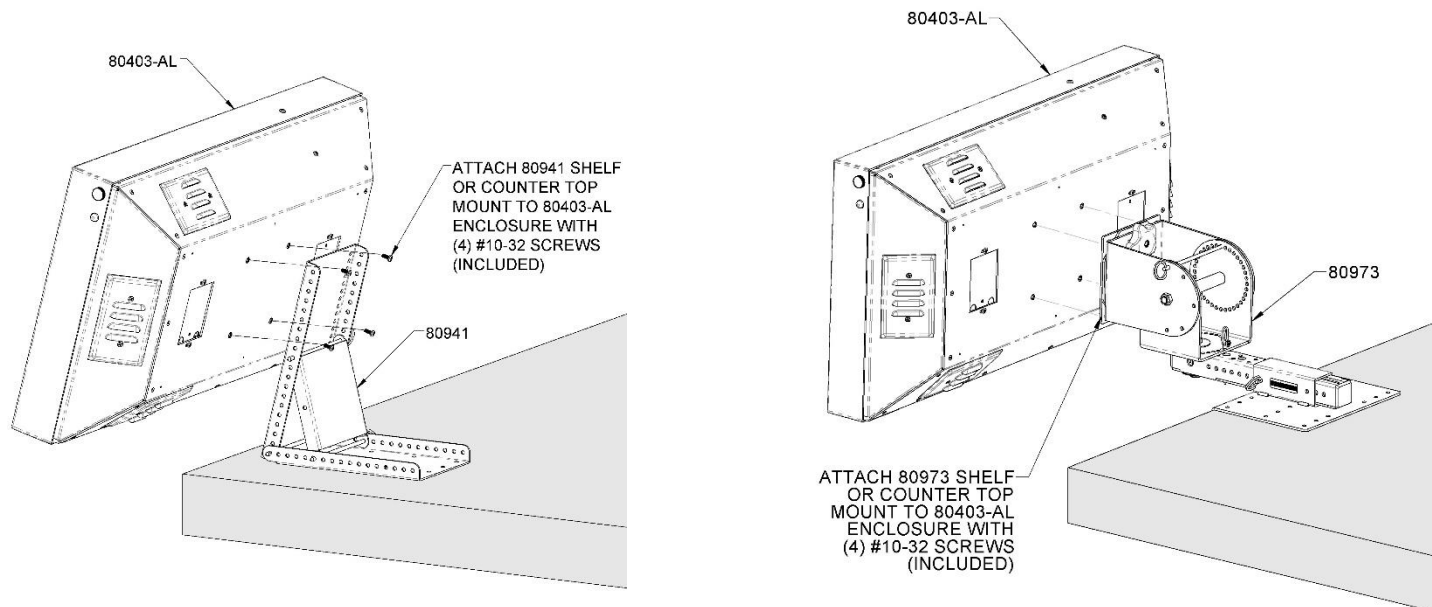


4. Place the ELO 2201L touchscreen into the enclosure.
5. Place the spacer onto the touchscreen and align with the 100mm VESA pattern.
6. Place the mounting plate over the spacer and touchscreen and secure the mounting plate and spacer to the 100mm VESA pattern in the touchscreen with (4) M4 X 16MM long screws.
7. Secure the mounting plate to the enclosure with (4) thumbnits and washers.

8. Re-attach safety cable.
9. Close enclosure using snap buttons.
10. Install the (2) #10 thumbscrews if required.



## Suggested mounting options;



This enclosure mounts to any 100mm VESA compatible pan and tilt head; because of the combined weight of the enclosure and terminal (approx. 32lbs) we recommend using one of our 35LB Mounting Systems.



**WARNING:** When using any PQS mounting product, please refer to that product's installation instructions to correctly install the mount. PQS recommends installation by a professional.

**We believe in ethical SEO relevancy; the following section was included to assist the all-knowing algorithms in locating this page; however, some humans like it too.**

- VESA wall mount, VESA wall mounting bracket, VESA wall mount bracket, Screen wall mount, screen wall mounting bracket, screen wall mount bracket, monitor wall mount, monitor wall mounting bracket.
- Monitor wall mount bracket, POS terminal wall mount, POS terminal wall mounting bracket, POS terminal wall mount bracket, Point of Sale POS terminal wall mount, Point of Sale terminal wall mounting bracket.
- Point of Sale terminal wall mount bracket, KDS wall mount, KDS wall mounting bracket, KDS wall mount bracket, Kitchen Display System wall mount, Kitchen Display System wall mounting bracket. Kitchen Display System wall mount bracket, Kitchen production System wall mount, Kitchen Monitor wall mount.
- Kitchen video wall mount. Touchscreen wall mount, All in One PC wall mount, Healthcare monitor wall mount, Industrial process monitor wall mount, Kiosk wall mount, Office monitor wall mount, manufacturing process monitor wall mount.

### Interactive Catalog of Enclosures for Touchscreen, Monitors and Thin Clients

These mounts are included in the [Enclosures for Touchscreen, Monitors and Thin Clients](#) product group pages on our website.

For more information; click on the images or descriptions to visit the individual product pages on our website. PDF Product Information Sheets are available at the Product Attachments tab on each product page.

[Practical Quality Systems Home Page](#)



[PN 80400-SS - 17-19" Universal Monitor and Thin Client Environmental Enclosure \(Stainless Steel\)](#)



[PN 80401-SS - 20-24" Universal Monitor and Thin Client Environmental Enclosure \(Stainless Steel\)](#)



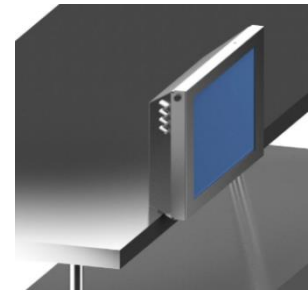
[PN 80402-SS - IBM TOSHIBA 4838 15 IN Anyplace Kiosk Enclosure \(Stainless Steel\)](#)



[PN 80403-AL - ELO 22" \(elo #E107766, ELO 2201L and ELO 22 inch I series\) Touchscreen + Thin Client Enclosure](#)



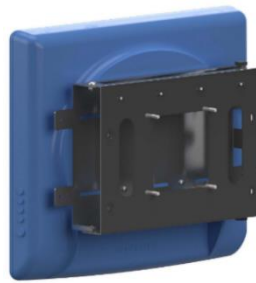
[PN 80403-SS - ELO 22" \(elo #E107766 or 2201L\) Touchscreen + Thin Client Enclosure \(stainless steel\)](#)



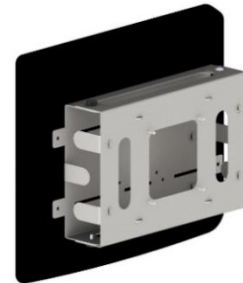
[PN 80404-AL - Elo 17" \(elo #E1715L\) Touchscreen + Thin Client Enclosure \(Chrome Painted Aluminum\)](#)



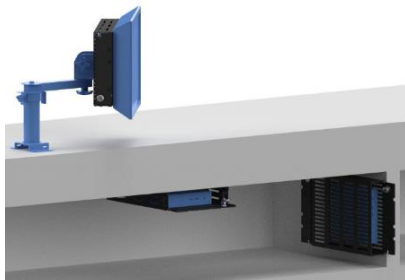
[PN 80405-AL - ELO 19 IN E1919L Touchscreen Enclosure](#)



[PN 80600-BLK - Back of Screen Storage Enclosure 100mm VESA - Black](#)



[PN 80600-CH - Back of Screen Storage Enclosure 100mm VESA - Chrome](#)



[PN 80640 - Universal Thin Client Security Enclosure](#)

### Interactive Catalog of Product Sub Groups

There are many individual products included in the various product sub groups featured on these pages.

Click on the images or descriptions to visit the individual product sub group pages on our website.

For Information about individual products; click on the "Product Attachments" tab on each of the individual product pages.

[Practical Quality Systems Home Page](#)



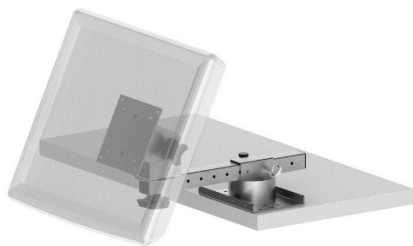
[Wall Mounts for Screens](#)



[Wall Mounts for POS Printers](#)



[Wall Mounts for Screens and POS Printers](#)



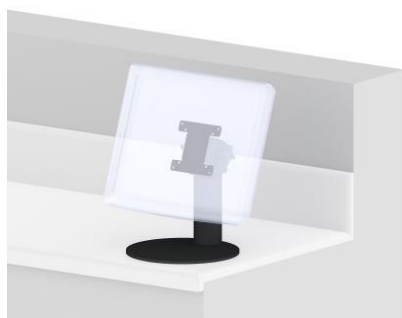
[Shelf Edge Mounts for Screens](#)



[Shelf Edge Mounts for POS Printers](#)



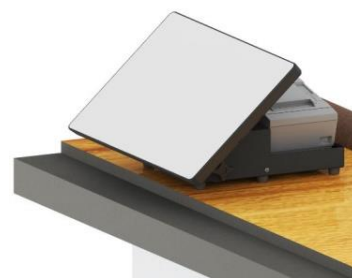
[Shelf Edge Mounts for Screens and POS Printers](#)



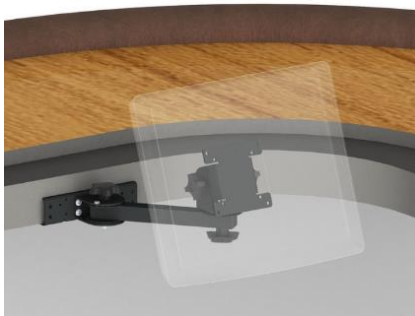
[Counter Top Mounts for Screens](#)



[Counter Top Mounts for POS Printers](#)



[Counter Top Mounts for Screens and POS Printers](#)



[Under Counter Mounts for Screens](#)



[Under Counter Mounts for POS Printers](#)



[Under Counter Mounts for Screens and POS Printers](#)

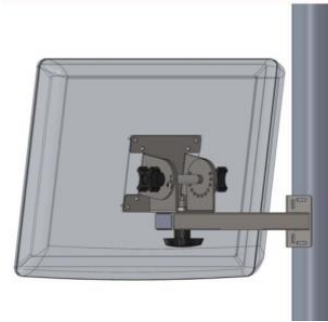
### Interactive Catalog of Product Sub Groups

There are many individual products included in the various product sub groups featured on these pages.

Click on the images or descriptions to visit the individual product sub group pages on our website.

For Information about individual products; click on the "Product Attachments" tab on each of the individual product pages.

[Practical Quality Systems Home Page](#)



[Pole Mounts for Screens](#)



[Pole Mounts for POS Printers](#)



[Ceiling Mounts for Screens](#)



[Oracle MICROS Mounting Systems](#)



[NCR Aloha KDS Mounting Solutions](#)



[QSR KDS Mounting Solutions](#)



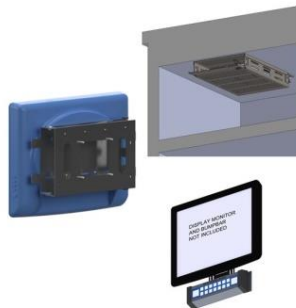
[Logic Controls Bematech KDS Mounting Solutions](#)



[Universal Kitchen Display System Mounting Packages](#)



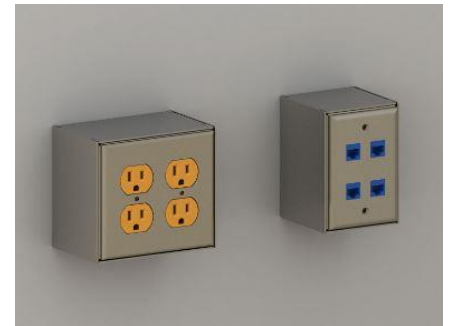
[Enclosures for Touchscreen, Monitors and Thin Clients](#)



[Back Of Screen VESA Mounts for Controllers, Thin Clients, Bump Bars, Tap+ Touch + EMV Readers](#)



[Stainless Steel Wireways](#)



[Stainless Steel Power and Data Outlet Monuments](#)

### Interactive Catalog of Product Sub Groups

There are many individual products included in the various product sub groups featured on these pages.

Click on the images or descriptions to visit the individual product sub group pages on our website.

For Information about individual products; click on the "Product Attachments" tab on each of the individual product pages.

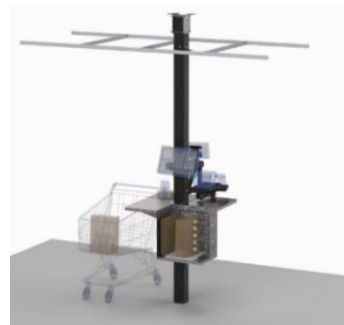
[Practical Quality Systems Home Page](#)



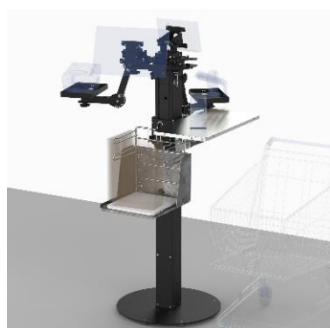
[Movable Countertop POS Stands](#)



[Direct Mount Countertop POS Stands](#)



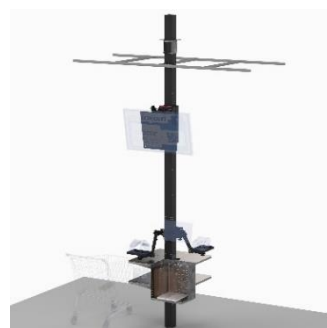
[POS Cashier Pole Stands](#)



[POS Cashier Floor Stands](#)



[POS Self-Check Out Kiosk Floor Stands](#)



[POS Self-Check Out Kiosk Pole Stands](#)



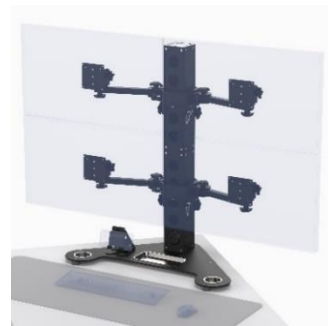
[Take Out Pickup Pole Stands](#)



[Take Out Pickup Floor Stands](#)



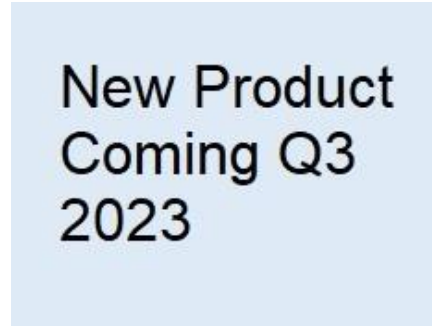
[Information Kiosk Floor Stands](#)



[Desktop Multi-Screen Pedestal Stands](#)



[4X4 Pole Clamp on Mounts](#)



[Mobile Cashier Stands](#)



**Interactive Catalog of Product Sub Groups**

There are many individual products included in the various product sub groups featured on these pages.

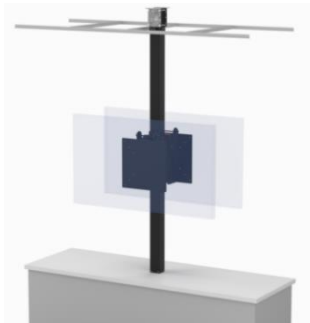
Click on the images or descriptions to visit the individual product sub group pages on our website.

For Information about individual products; click on the "Product Attachments" tab on each of the individual product pages.

[Practical Quality Systems Home Page](#)

New Product  
Coming Q3  
2023

Mobile Self-Check Out Stands



[Digital Signage Pole Stands](#)

New Product  
Coming Q3  
2023

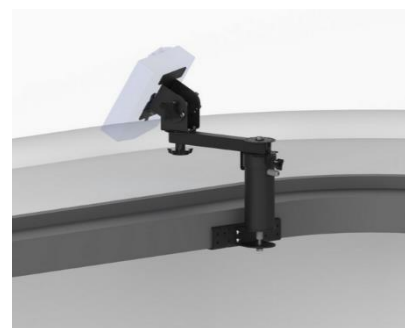
Stationary Podiums

New Product  
Coming Q3  
2023

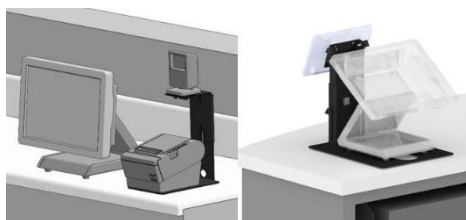
Stationary Podiums with Ceiling Feed Pole

New Product  
Coming Q3  
2023

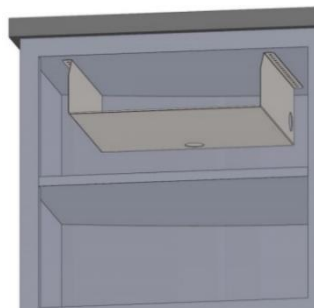
Mobile Podiums



[Ingenico Lane Reader Mounting Systems](#)



[Other Counter Top Mounts](#)



[Cash Drawer Mounting Solutions](#)