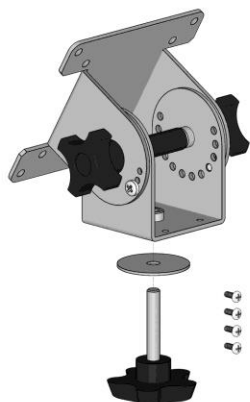
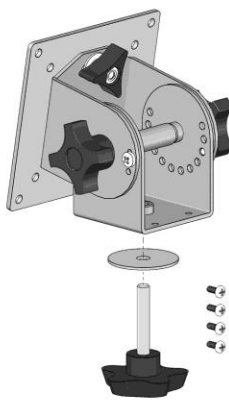


PQS

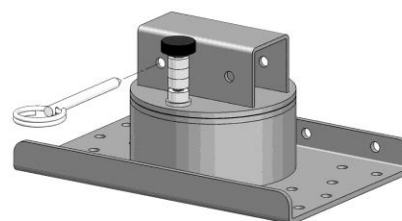
PRACTICAL QUALITY SYSTEMS
Fast Custom Manufacturing - Nationwide Installation Services



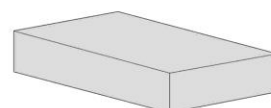
PN 67080-DIY



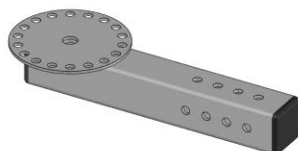
PN 67081-DIY-CH



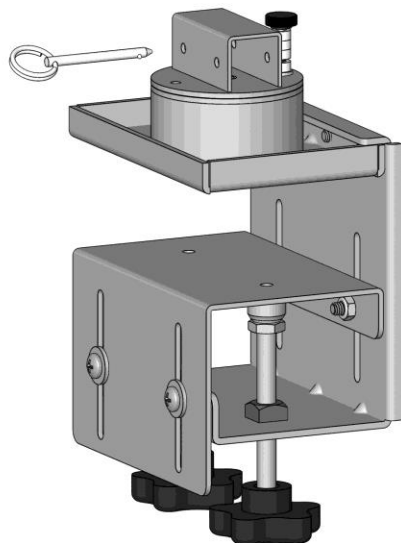
PN 67107-DIY



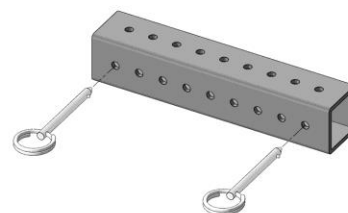
PN 67038-DIY



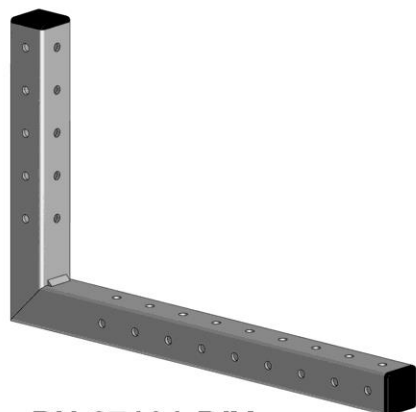
PN 67103-DIY



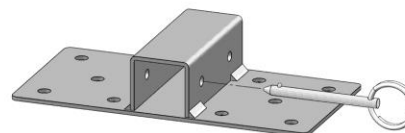
PN 67043-DIY



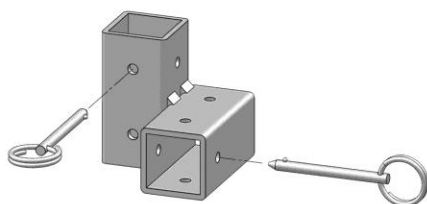
PN 67039-DIY



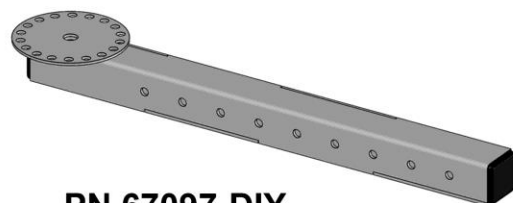
PN 67101-DIY



PN 67096-DIY



PN 67102-DIY



PN 67097-DIY

System Overview

After many years of designing and installing a wide range of screen mounting systems; we decided to create a new group of mounts that attach to walls, shelf edges, counter tops or any other flat horizontal surface that would offer the maximum in tool-less adjust-ability.

We then expanded the concept to include a heavy duty “Clamp On” solution that can be used for temporary installations or in applications where you can’t or don’t want to use fasteners to secure the mount to the surface.

Our concept was to create a set of easy-to-use modular components that could be assembled in a myriad of different ways without tools; yet hold screens securely at exactly the right position.

The versatility and modularity of these mounting systems also adds value because they can be easily reconfigured or modified if your application needs should ever change in the future.

Pre-configured or Custom?

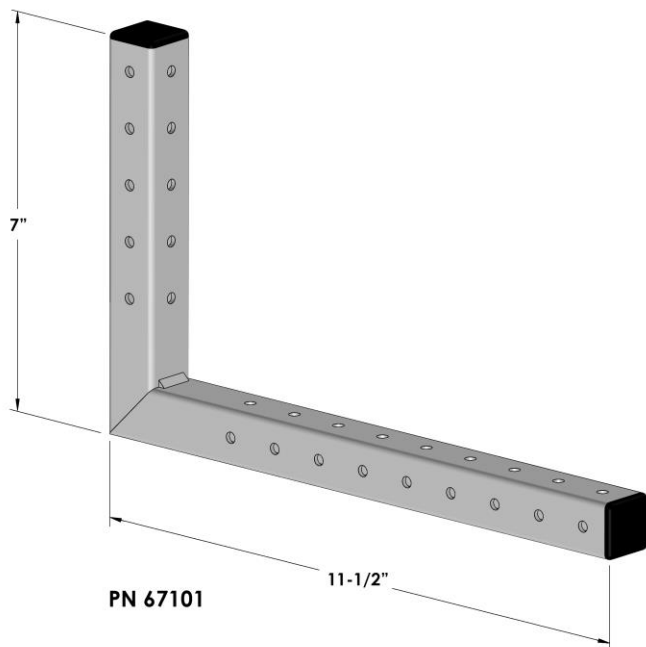
We have put together a group of preconfigured product assemblies based on these interchangeable components that will work in the most common mounting scenarios. (Refer to pages 13-19)

However; if your application is not addressed by one of our preconfigured assemblies; you can “Design It Yourself “and select just the components you need to configure your own custom solution.

Another option is to start with one of our preconfigured assemblies and then add components as needed to create the perfect mount for your special application.

List of DESIGN IT YOURSELF VESA Screen Mounting System Components

L Arm.....	PN 67101
Cross Receiver.....	PN 67102
Long Pan and Tilt Head Arm.....	PN 67097
Short Pan and Tilt Head Arm.....	PN 67103
Extension Coupler.....	PN 67039
Fixed Mounting Plate.....	PN 67096
VESA Pan and Tilt Head.....	PN 67080
Biased VESA Pan and Tilt Head.....	PN 67081
Panning Mounting Plate Assembly.....	PN 67107
Heavy Duty Desk Clamp Assembly Kit.....	PN 67043
Heavy Duty Desk Clamp One Inch Spacer Plate.....	PN 67038



L Arm PN 67101

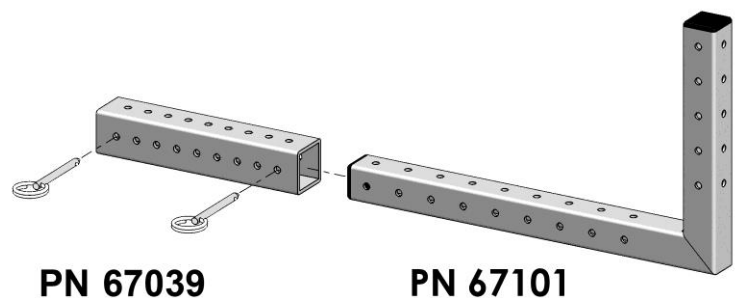
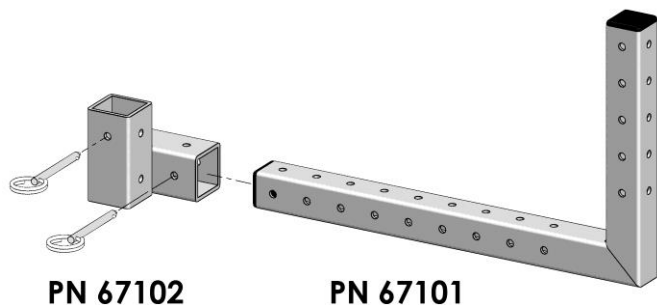
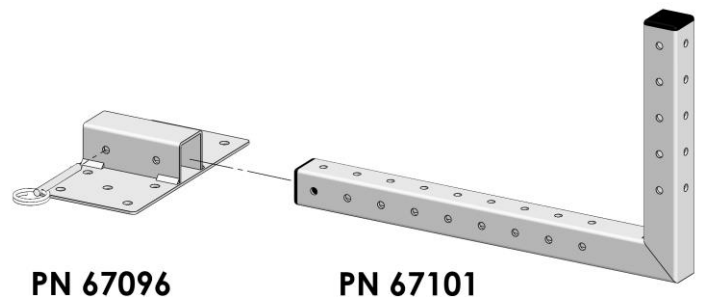
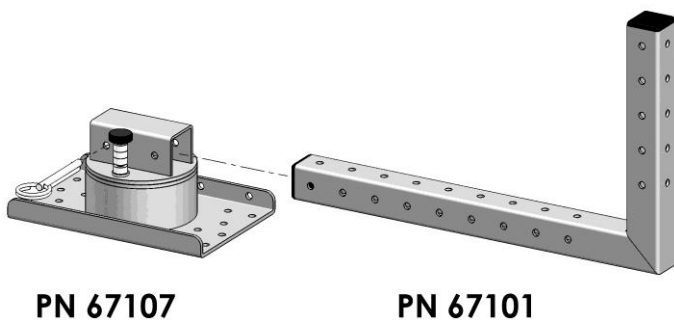
The L Arm component can be installed vertically or horizontally and is used to connect two other components together.

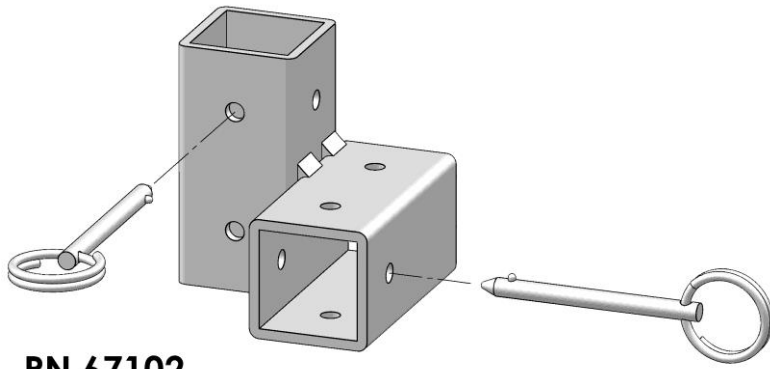
Locking pin holes are provided at one-inch increments along all faces of the arm and both ends of the arm are sealed with durable black plastic end caps.

The L Arm can be inserted with the shorter or longer sections facing which ever direction works best for your application.

This component is made of cold rolled steel and is available in two durable, powder coat finish choices: a high gloss silver "chrome" finish that emulates the look of polished stainless steel or a black, low gloss, micro wrinkle finish that resists fingerprints.

The L Arm can be inserted into the following other components:



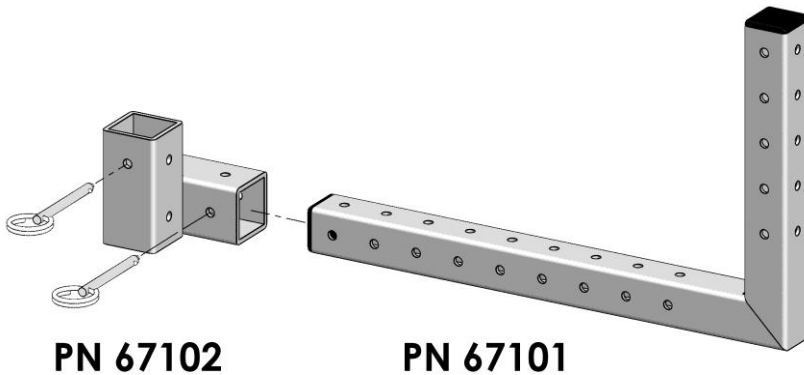
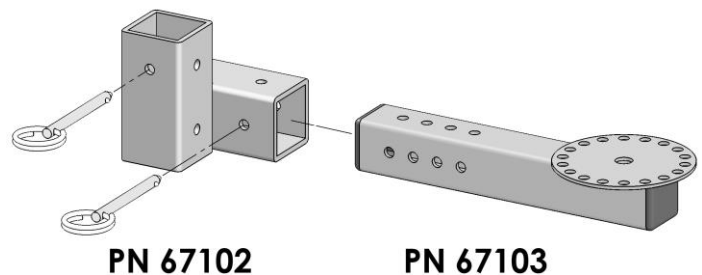
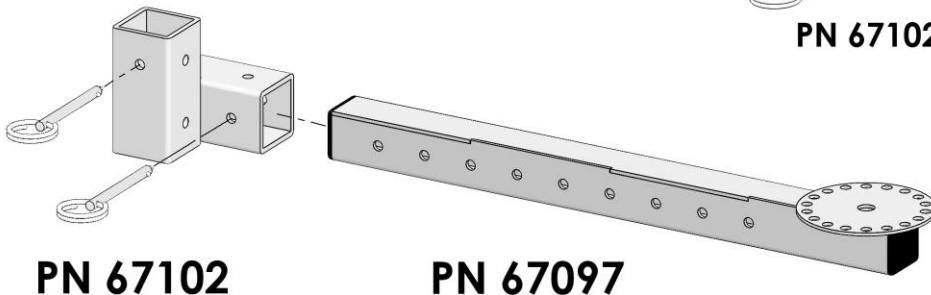
**PN 67102****Cross Receiver PN 67102**

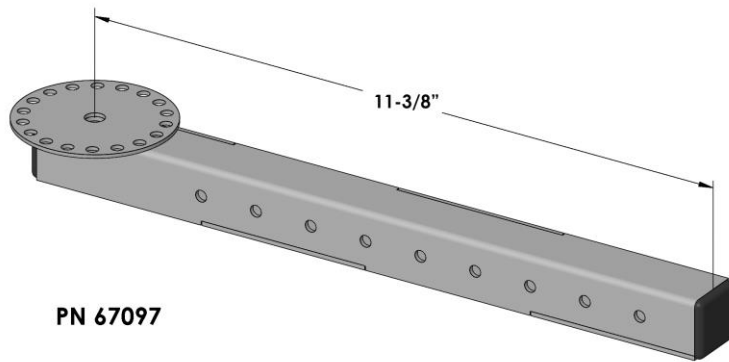
The Cross Receiver component can be installed vertically or horizontally and is used to connect any two arm components together at 90 degree angles to one another.

This assembly includes two 3/16" Lock Pins with attached split rings.

This component is made of cold rolled steel and is available in two durable, powder coat finish choices: a high gloss silver "chrome" finish that emulates the look of polished stainless steel or a black, low gloss, micro wrinkle finish that resists fingerprints. Locking pin holes are provided on all sides of the part.

The Cross Receiver allows insertion of the following other components:

**PN 67102****PN 67101****PN 67102****PN 67103****PN 67102****PN 67097**



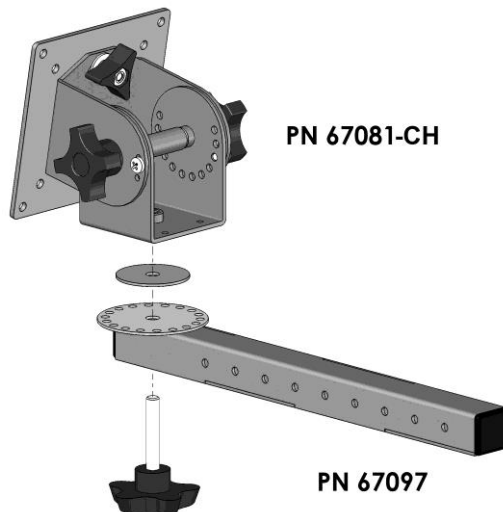
Long VESA Pan and Tilt Head Arm PN 67097

The Long Pan and Tilt Head Arm component can be used in many different ways as part of a custom configured mounting assembly.

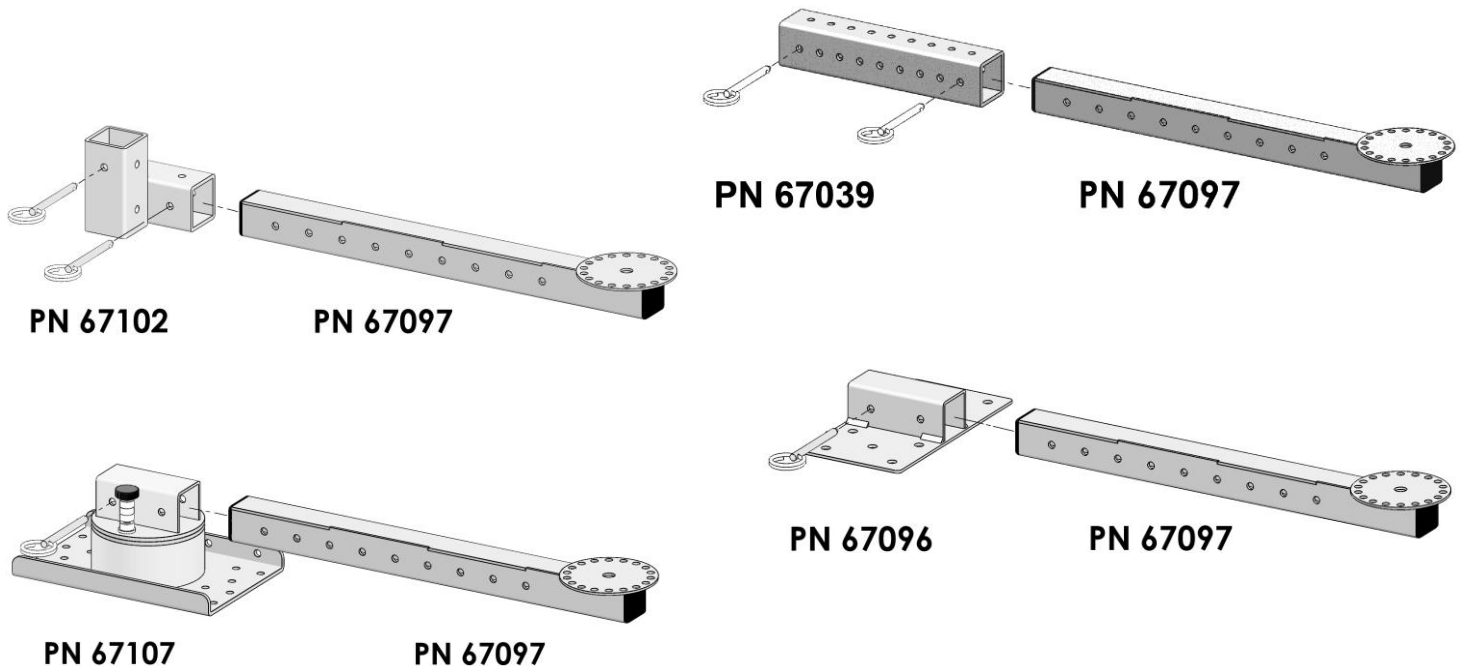
One end of these arms supports a VESA Pan and Tilt Head and features a round panning plane base plate attached to the end of the arm. The plate has a 5/16" ID center hole for insertion of the shaft of a five point hand knob to secure the pan position.

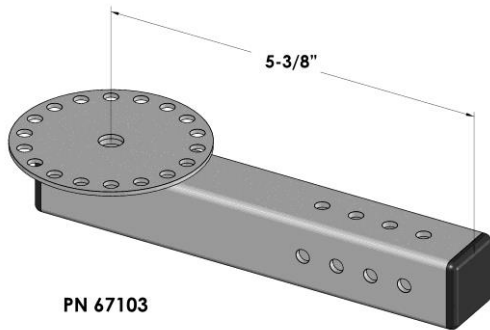
Locking pin holes are provided at one inch increments along all faces of the arm and both ends of the arm are sealed with durable black plastic end caps.

This component is made of cold rolled steel and is available in two durable, powder coat finish choices: a high gloss silver "chrome" finish that emulates the look of polished stainless steel or a black, low gloss, micro wrinkle finish that resists fingerprints.



One end of the Long VESA Pan and Tilt Head Arm can be inserted horizontally into the following other components:





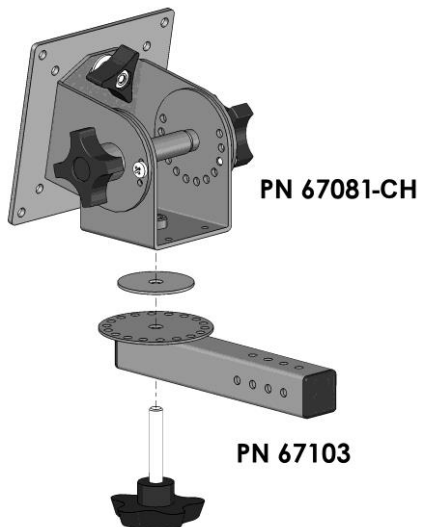
Short VESA Pan and Tilt Head Arm PN 67103

The Short VESA Pan and Tilt Head Arm component can be used in many different ways as part of a custom configured mounting assembly.

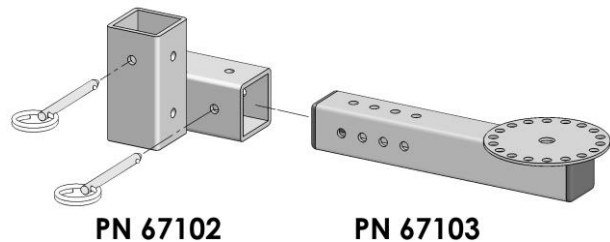
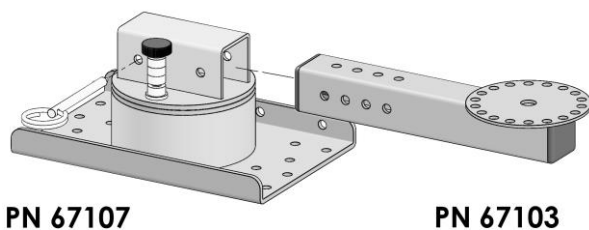
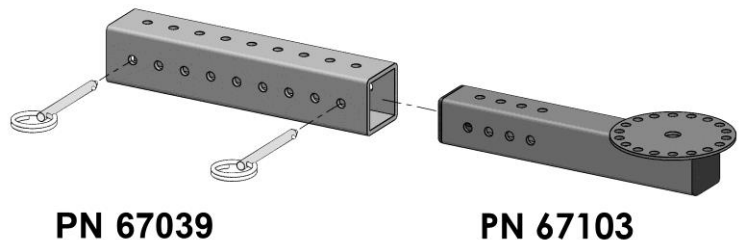
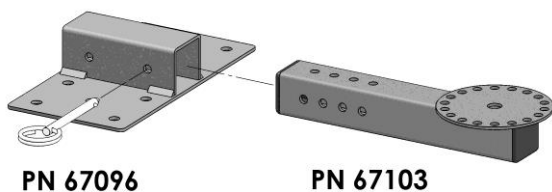
One end of these arm supports a VESA Pan and Tilt Head and features a round panning plane base plate attached to the end of the arm. The plate has a 5/16" ID center hole for insertion of the shaft of a five point hand knob to secure the pan position.

Locking pin holes are provided at one inch increments along all faces of the arm and both ends of the arm are sealed with durable black plastic end caps.

This component is made of cold rolled steel and is available in two durable, powder coat finish choices: a high gloss silver "chrome" finish that emulates the look of polished stainless steel or a black, low gloss, micro wrinkle finish that resists fingerprints.



One end of the Short VESA Pan and Tilt Head Arm can be inserted horizontally into the following other components:



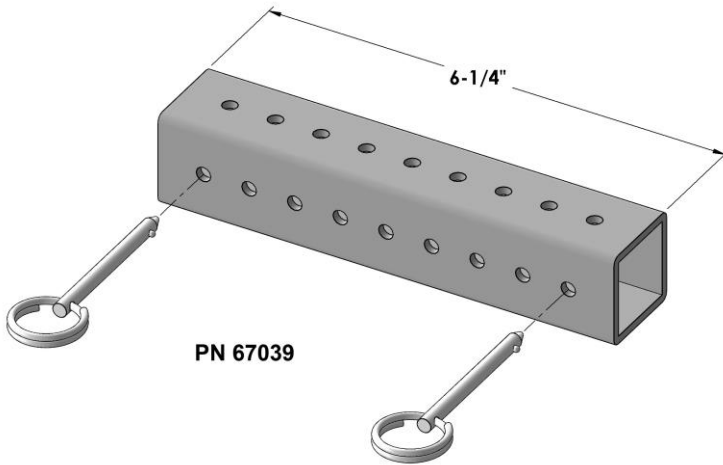
Extension Coupler PN 67039

The Extension Coupler component can be attached vertically or horizontally and is used to connect any two arm components together.

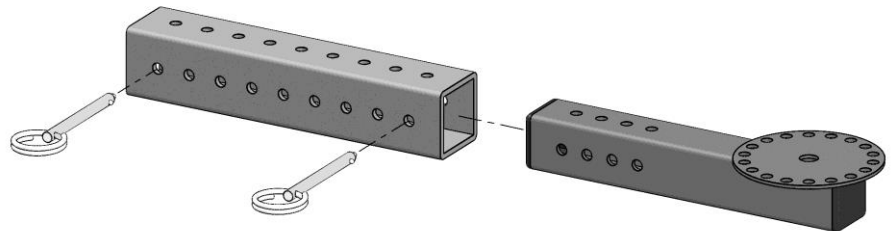
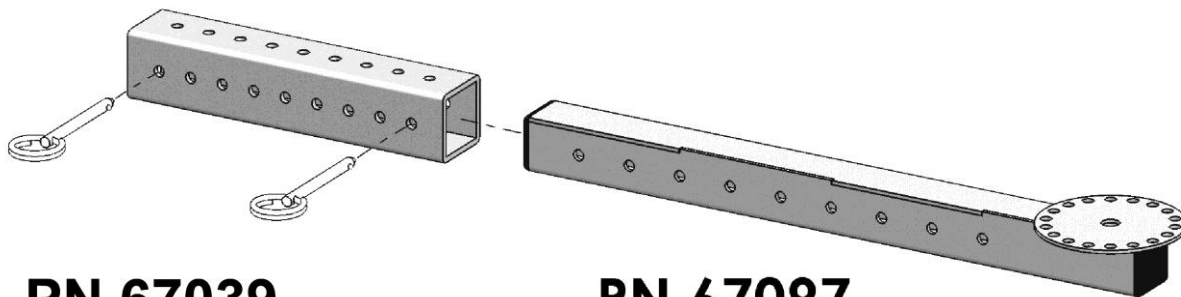
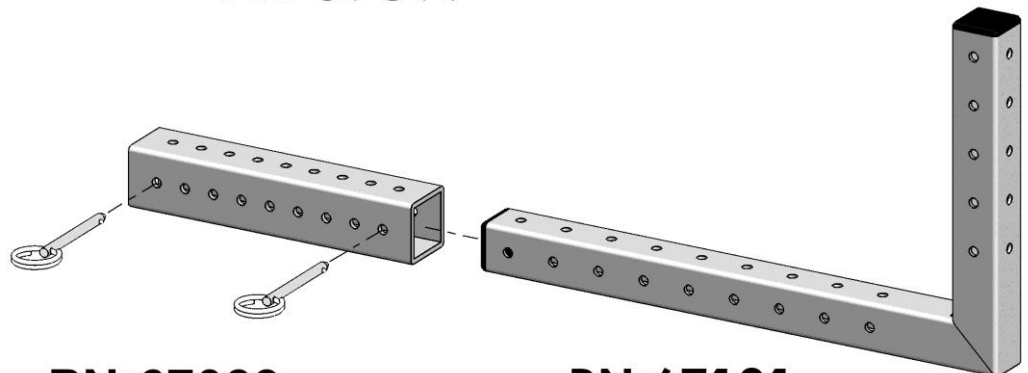
This assembly includes two 3/16" Locking Pins with attached split rings.

Locking pins are inserted through any of holes on any side of the Coupler to secure the arm length positions.

This component is made of cold rolled steel and is available in two durable, powder coat finish choices: a high gloss silver "chrome" finish that emulates the look of polished stainless steel or a black, low gloss, micro wrinkle finish that resists fingerprints.



The Extension Coupler allows insertion of the following arm components:

**PN 67039****PN 67103****PN 67039****PN 67097****PN 67039****PN 67101**

Fixed Mounting Plate PN 67096

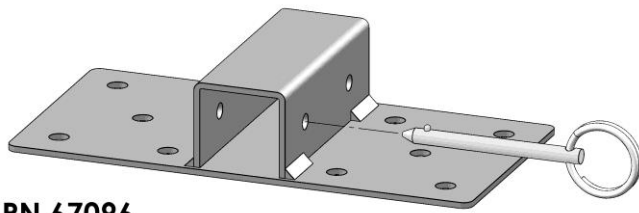
The Fixed Mounting Plate component is a secure mounting base that can be installed vertically or horizontally in either standard or inverted orientation on any flat surface.

The Fixed Mounting Plate allows one of any type of arm to be inserted, supported and secured.

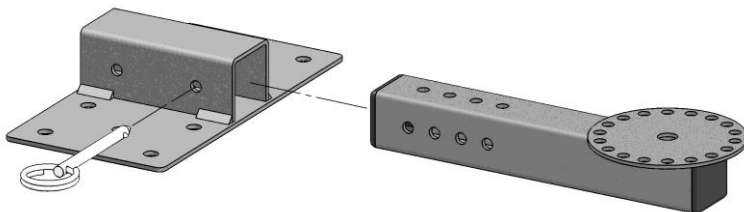
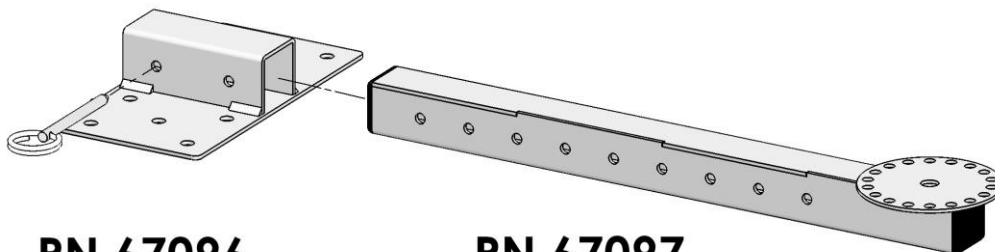
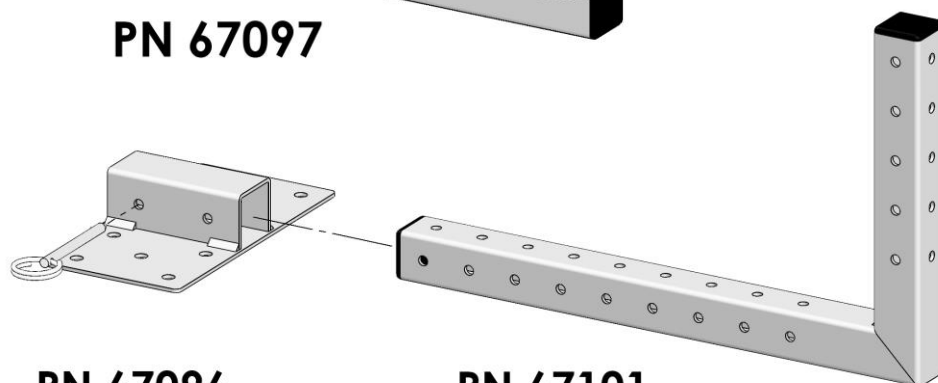
This assembly includes one 3/16" Locking Pin with attached split ring.

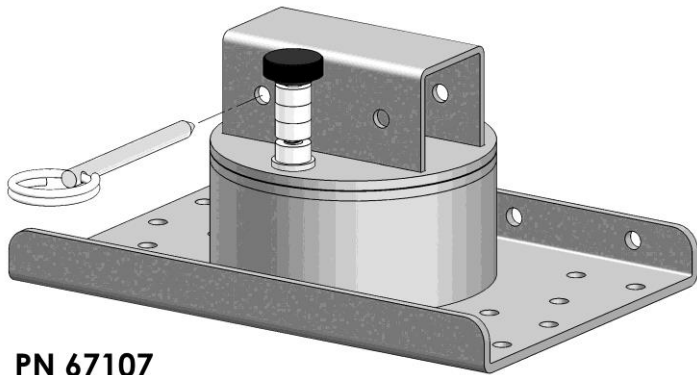
A Locking pin is inserted through holes in the channel section to secure an arm section at the desired length.

This component is made of cold rolled steel and is available in two durable, powder coat finish choices: a high gloss silver "chrome" finish that emulates the look of polished stainless steel or a black, low gloss, micro wrinkle finish that resists fingerprints.

**PN 67096**

The Fixed Mounting Plate allows insertion of any of the following arm components:

**PN 67096****PN 67103****PN 67096****PN 67097****PN 67096****PN 67101**

**PN 67107****Panning Mounting Plate Assembly PN 67107**

The Panning Mounting Plate Assembly can be installed on any flat, horizontal surface in standard or inverted orientation.

The Panning Mounting Plate allows one of any type of arm to be inserted, supported and secured.

This assembly includes one 3/16" Locking Pin with attached split ring and a Raised Head 10-32 thumbscrew.

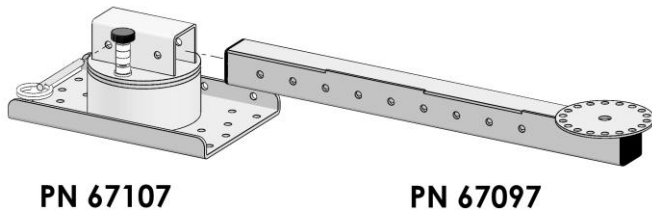
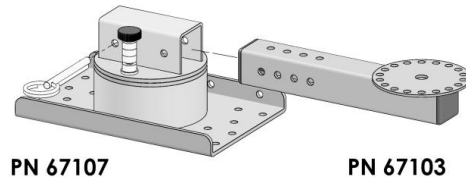
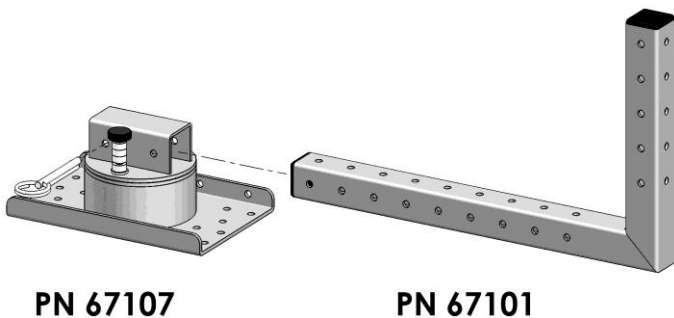
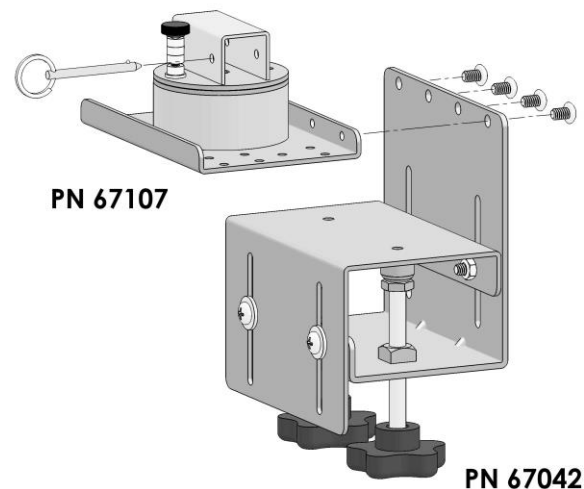
This Mounting Plate Assembly offers a wide range of side-to-side pan positions that are secured with an easy to use 10-32 thumbscrew.

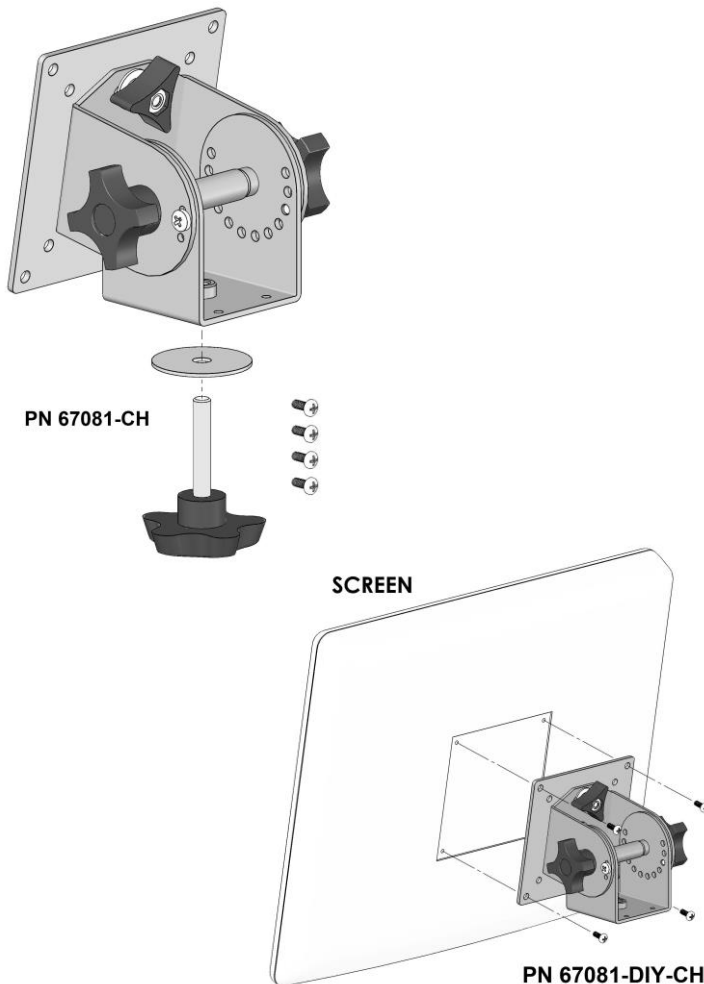
A Locking pin is inserted through holes in the channel section to secure an arm section at the desired length.

This component is made of cold rolled steel and is available in two durable, powder coat finish choices: a high gloss silver "chrome" finish that emulates the look of polished stainless steel or a black, low gloss, micro wrinkle finish that resists fingerprints.

Panning Mounting Plate can also be used with the optional Desk Clamp Assembly Kit PN 67042.

The Panning Mounting Plate Assembly allows insertion of any arm component:

**PN 67107****PN 67097****PN 67107****PN 67103****PN 67107****PN 67101****PN 67107****PN 67042**



VESA Biased Pan and Tilt Head PN 67081-CH

The VESA Biased Pan and Tilt Head supports all 75 or 100mm VESA compatible screens up to 20 lbs.

It offers three planes of position adjustment without tools via the hand knobs; the pan and tilt positions can also be locked permanently with a Phillips screw driver.

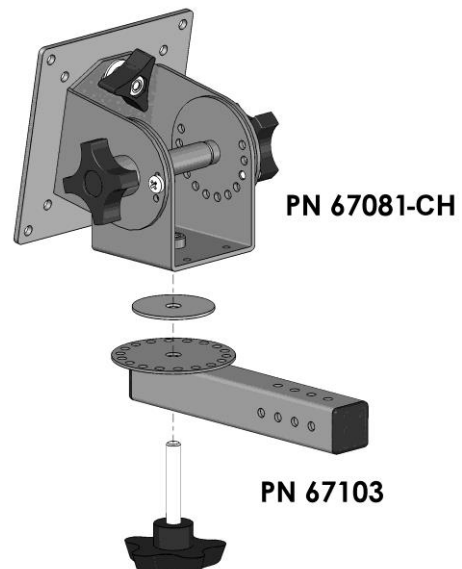
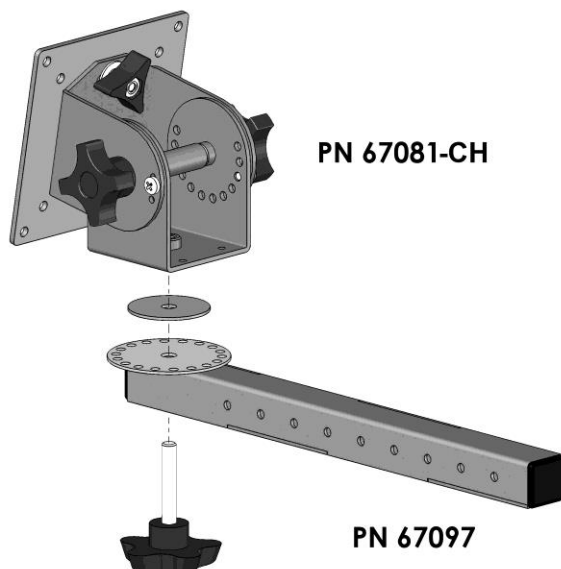
The side to side tilting or bias angle; can be adjusted to bring the screen to a level position and locked with the three point hand knob.

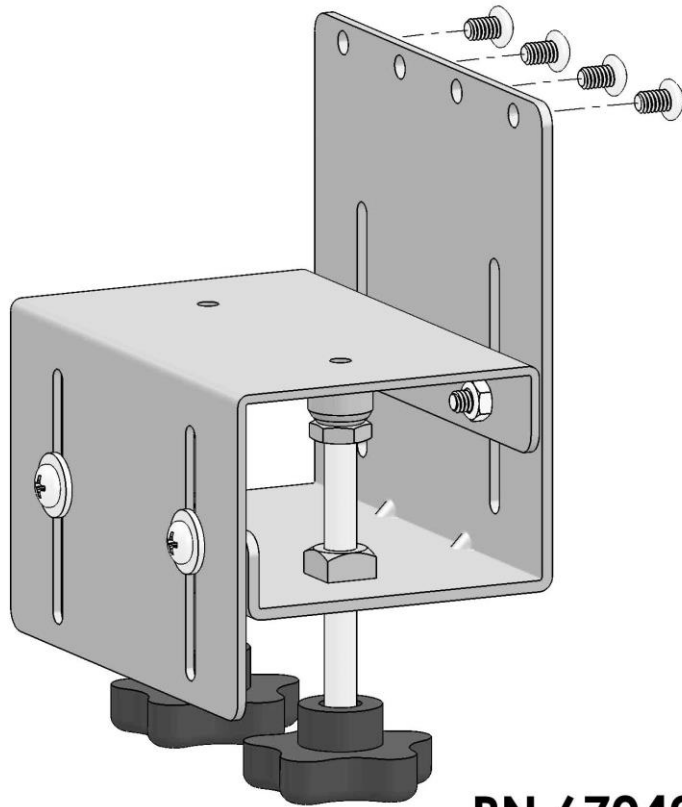
This assembly includes four M4 x 8mm long screws that are used attach most VESA compliant screens to the Pan and Tilt Head.

This assembly also includes an Anti-Slip Washer and a Five Point hand knob to attach the Pan and Tilt Head to the pan plane base plate of an arm assembly.

This component is made of cold rolled steel and is available in two durable, powder coat finish choices: a high gloss silver "chrome" finish that emulates the look of polished stainless steel or a black, low gloss, micro wrinkle finish that resists fingerprints.

The VESA Biased Pan and Tilt Head can be attached to the pan plane base plate end of either of the following arm assemblies:



**PN 67042****Heavy Duty Desk Clamp Assembly Kit PN 67042**

The Heavy Duty Desk Clamp attaches to our Panning Mounting Plate Assembly PN 67107 with four 1/4 - 20 Phillips head screws.

The gripping area of the clamp is 6" W X 4" D

This assembly includes a self-adhesive non-slip pad that is installed on the bottom of the Panning Mounting Plate Assembly PN 67107 to reduce slippage and prevent any marring of the surface.

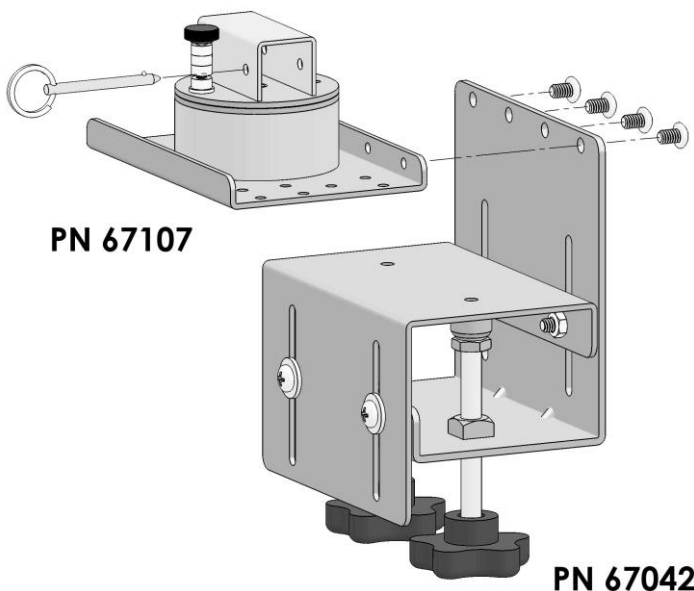
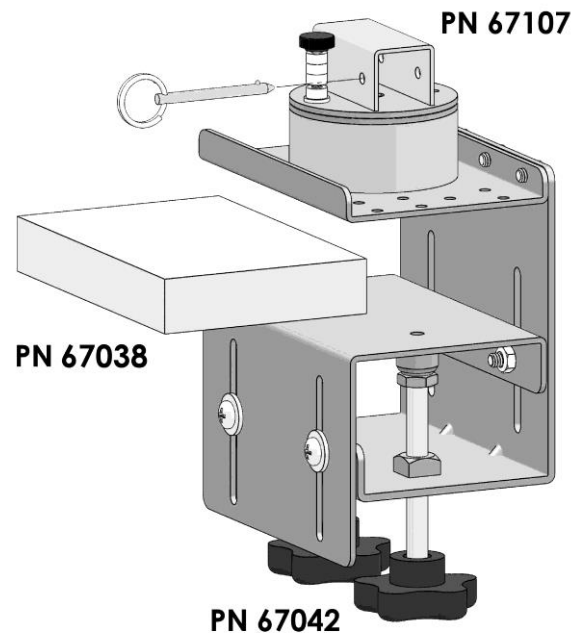
Includes four 1/4 - 20 X 3/8" L Phillips head screws.

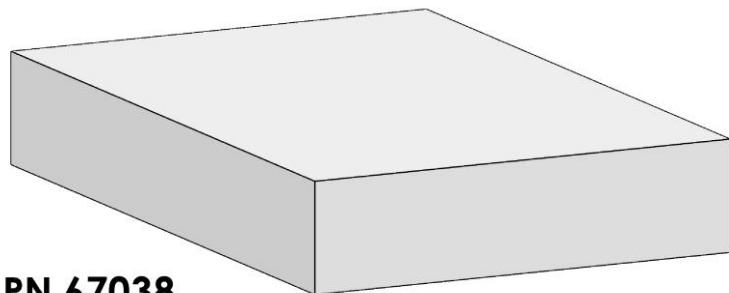
The clamp can be attached to most smooth horizontal surfaces that are from 1" to 3 - 1/2" thick.

Two, large, four point hand knobs make it easy to secure the clamp to the edge of the mounting surface.

This assembly is made of cold rolled steel and is available in two durable, powder coat finish choices: a high gloss silver "chrome" finish that emulates the look of polished stainless steel or a black, low gloss, micro wrinkle finish that resists fingerprints.

Use optional PN 67038 Heavy Duty Desk Clamp One Inch Spacer Plate If the horizontal surface that you are clamping to is not at least one inch thick.

**PN 67107****PN 67042****PN 67038****PN 67042**

**PN 67038****Heavy Duty Desk Clamp One Inch Spacer Plate
PN 67038**

Use this part if the horizontal surface that you are clamping to is not at least one inch thick.

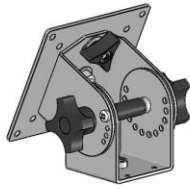
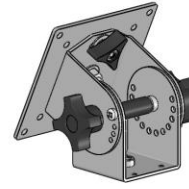
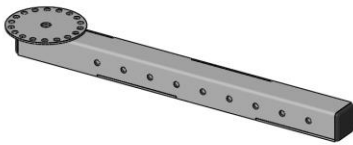
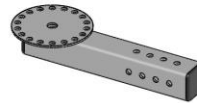
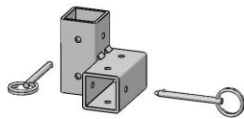
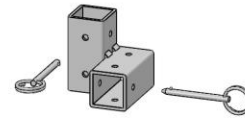
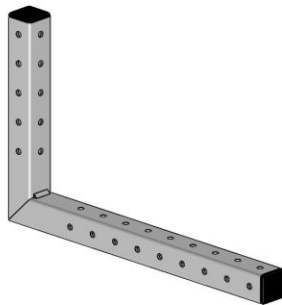
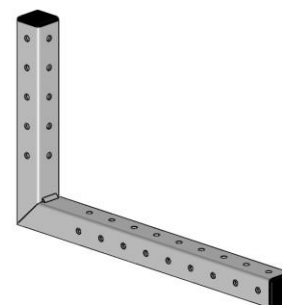
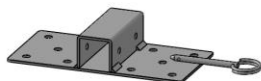
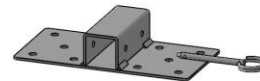
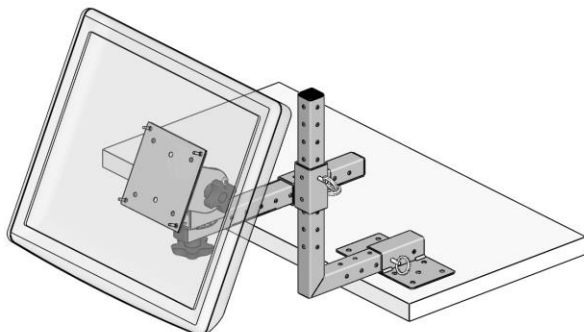
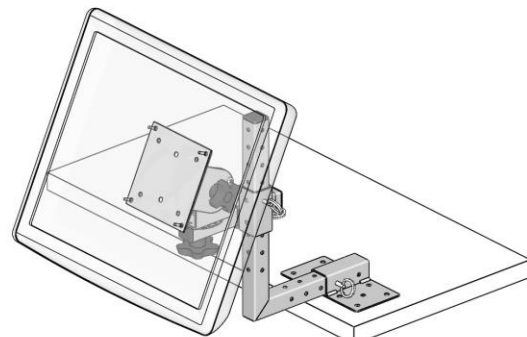
The Spacer Plate is installed between the bottom side of the mounting surface and the top of the clamping jaw of the Desk clamp assembly.

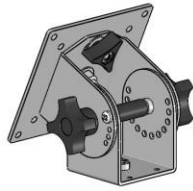
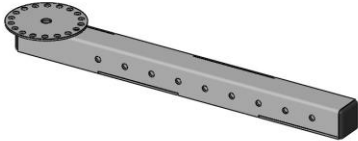
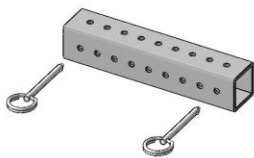
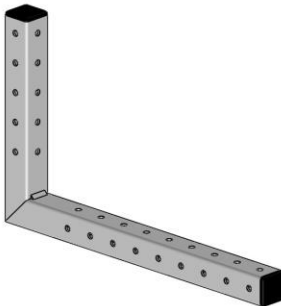
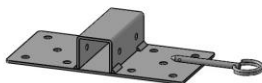
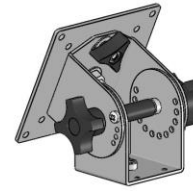
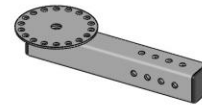
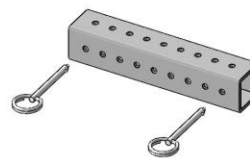
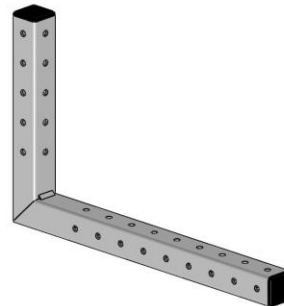
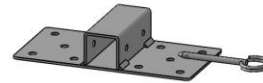
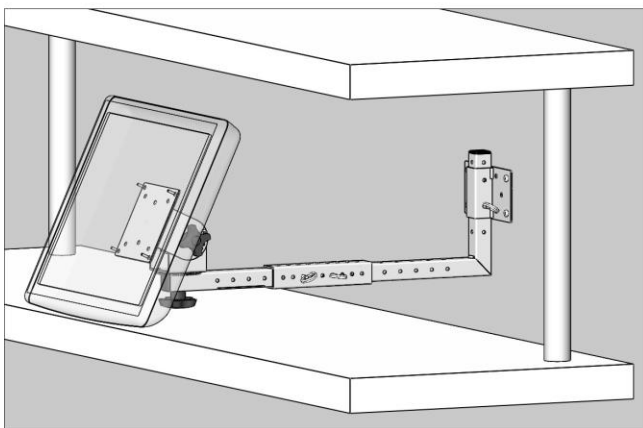
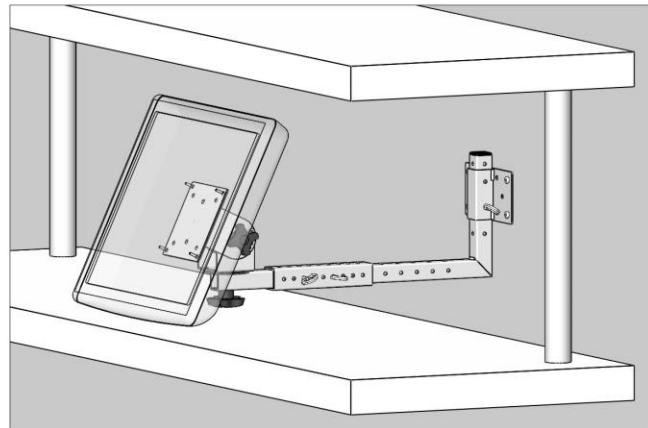
Dimensions: 1" H X 6" W X 4" D

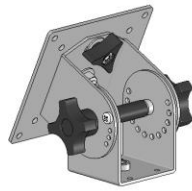
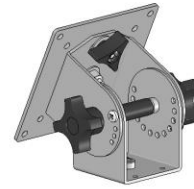
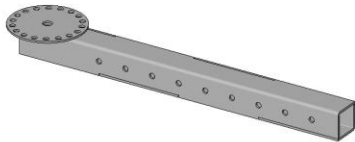
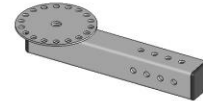
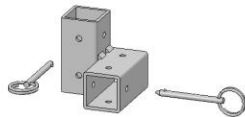
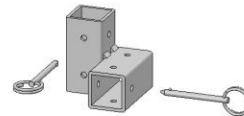
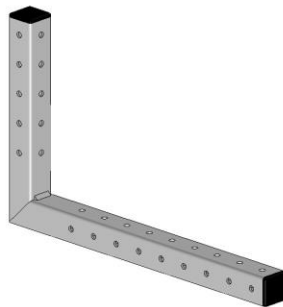
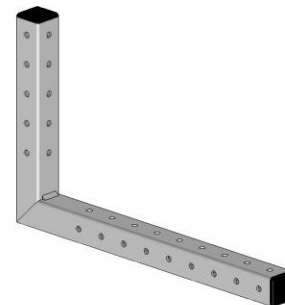
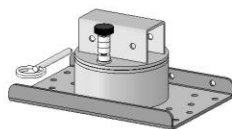
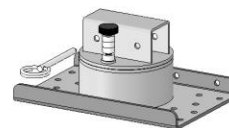
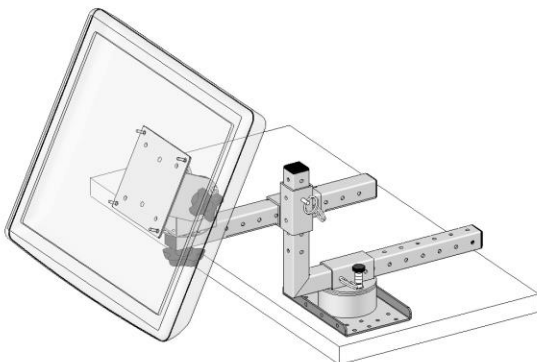
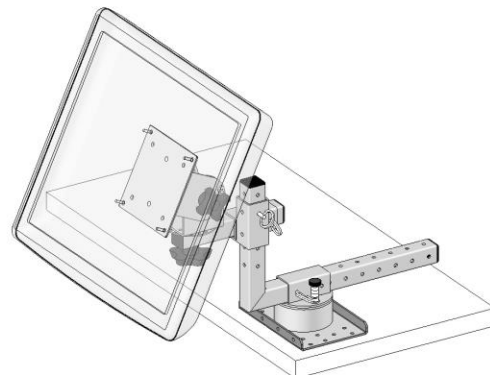
Material: Chemical Resistant Type I PVC

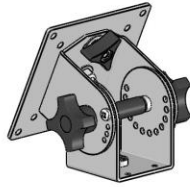
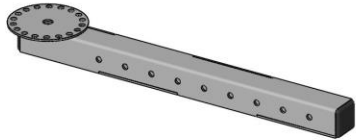
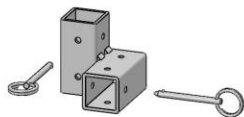
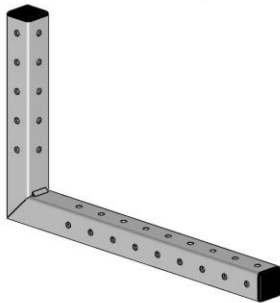
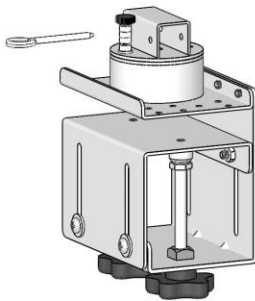
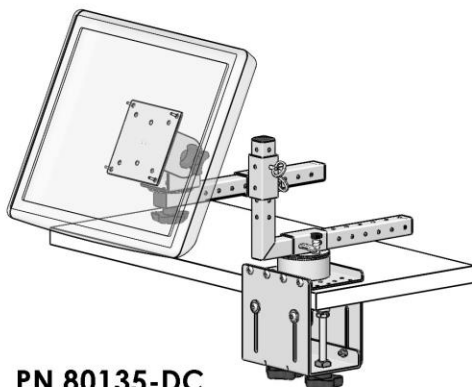
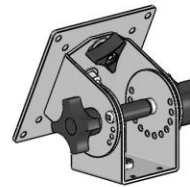
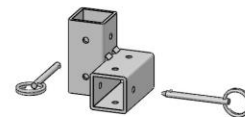
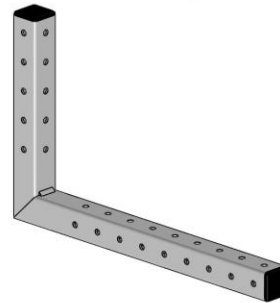
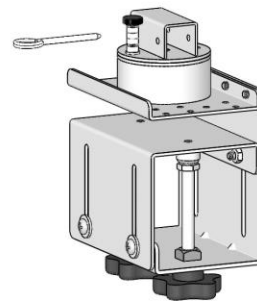
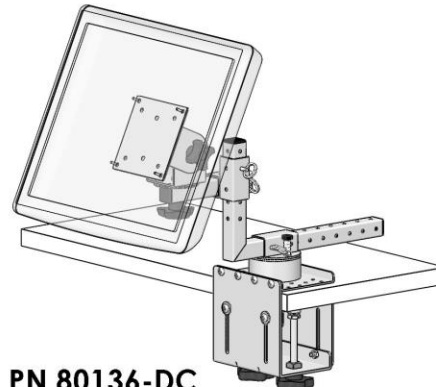
Color: Dark gray

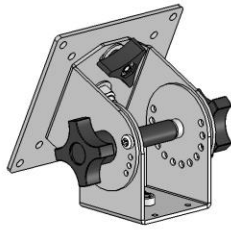
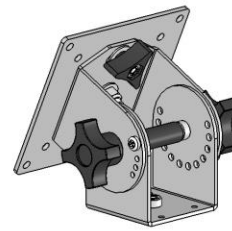
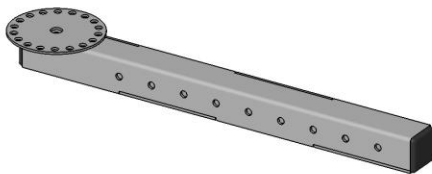
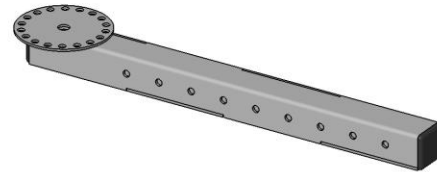
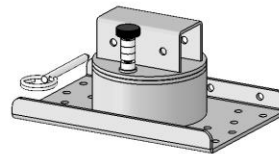
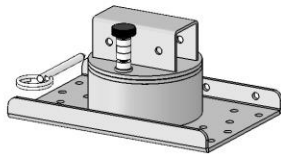
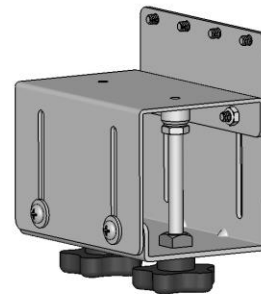
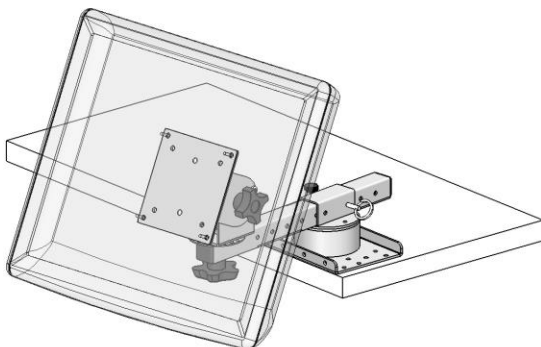
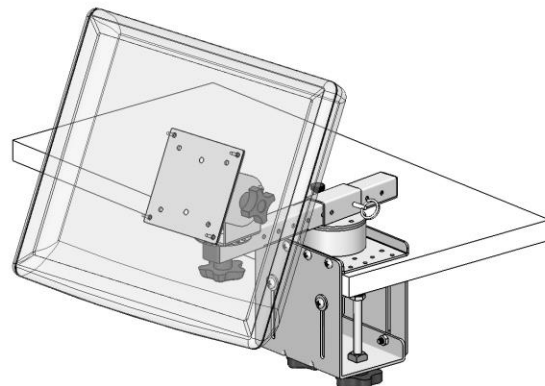
Temperature Range: 32° to 140° F, meets UL 94V0 for flame retardance.

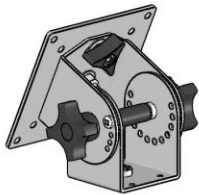
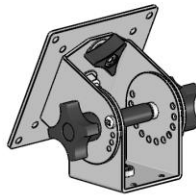
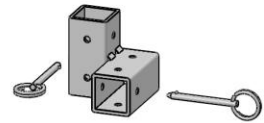
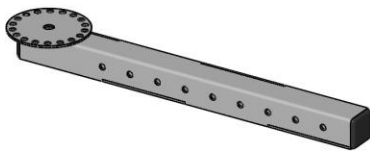
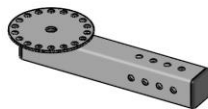
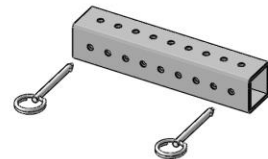
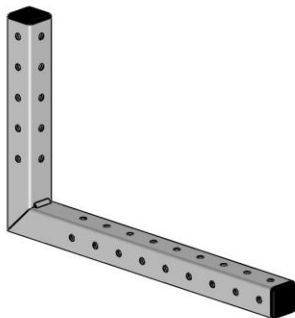
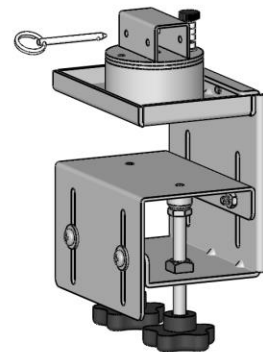
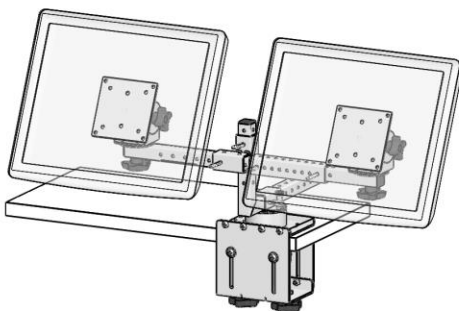
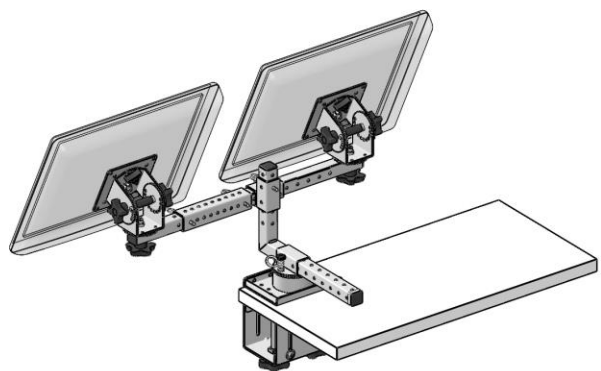
Preconfigured Product Assembly Examples:**PN 67081****PN 67081****PN 67097****PN 67103****PN 67102****PN 67102****PN 67101****PN 67101****PN 67096****PN 67096****PN 80131****PN 80132**

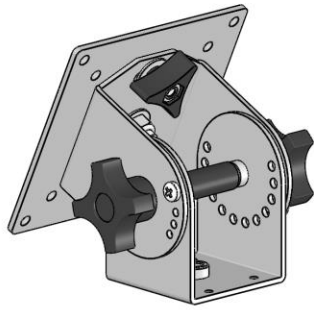
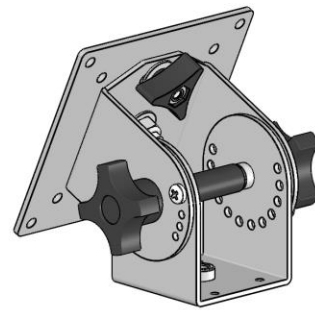
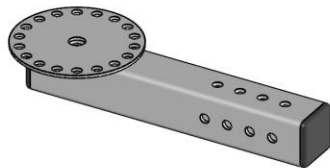
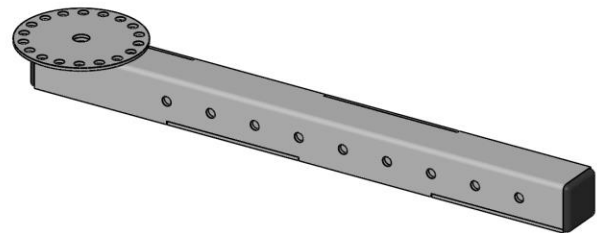
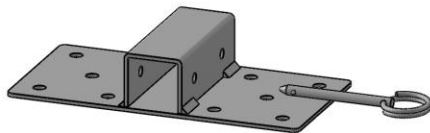
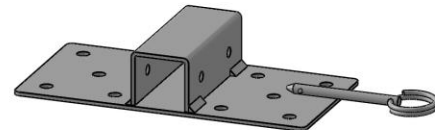
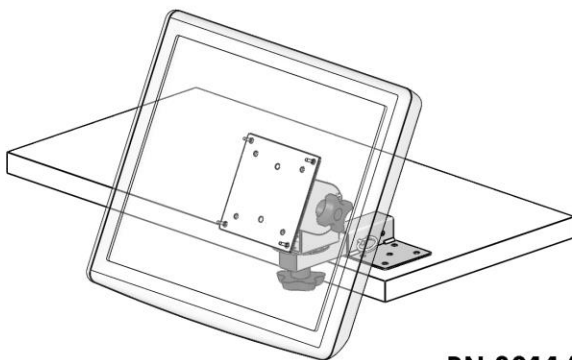
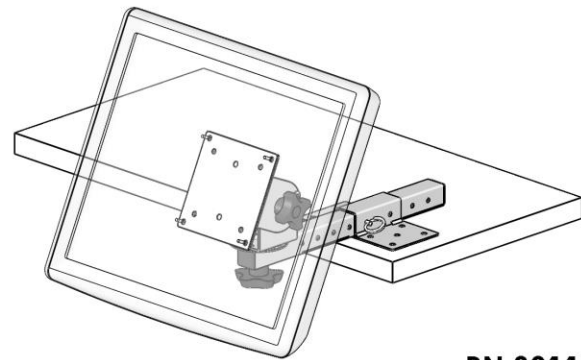
Preconfigured Product Assembly Examples:**PN 67081****PN 67097****PN 67039****PN 67101****PN 67096****PN 67081****PN 67103****PN 67039****PN 67101****PN 67096****PN 80133****PN 80134**

Preconfigured Product Assembly Examples:**PN 67081****PN 67081****PN 67097****PN 67103****PN 67102****PN 67102****PN 67101****PN 67101****PN 67107****PN 67107****PN 80135****PN 80136**

Preconfigured Product Assembly Examples:**PN 67081****PN 67097****PN 67102****PN 67101****PN 67042****PN 80135-DC****PN 67081****PN 67103****PN 67102****PN 67101****PN 67042****PN 80136-DC**

Preconfigured Product Assembly Examples:**PN 67081****PN 67081****PN 67097****PN 67097****PN 67107****PN 67107****PN 67042****PN 80103****PN 80103-DC**

Preconfigured Product Assembly Examples:**PN 67081****PN 67081****PN 67102****PN 67097****PN 67103****PN 67039****PN 67101****PN 67043****PN 80160**

Preconfigured Product Assembly Examples:**PN 67081****PN 67081****PN 67103****PN 67097****PN 67096****PN 67096****PN 80116****PN 80117**

PART NUMBERING LEGEND

PART NUMBER	SUFFIXES 1 & 2 = ADDED FEATURES	SUFFIX 3 = FINISH TYPE
80XXX	DC (Example: Desk Clamp)	BLK (Example: Black powder coat)

AVAILABLE FINISHES

BLK = Durable Black, low gloss, micro wrinkle powder coat,

CH = “Chrome” powder coat with a high gloss silver finish that emulates the look of polished stainless steel.

SS = Stainless Steel with a fine grained, brushed finish

GAL= Galvanized gray dappled finish

Custom Finishes = available by special order; contact our sales department

Interactive Catalog of Product Sub Groups

There are many individual products included in the various product sub groups featured on these pages.

Click on the images or descriptions to visit the individual product sub group pages on our website.

For Information about individual products; click on the "Product Attachments" tab on each of the individual product pages.

[Practical Quality Systems Home Page](#)



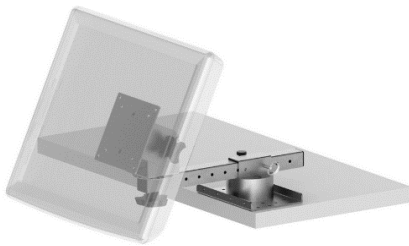
[Wall Mounts for Screens](#)



[Wall Mounts for POS Printers](#)



[Wall Mounts for Screens and POS Printers](#)



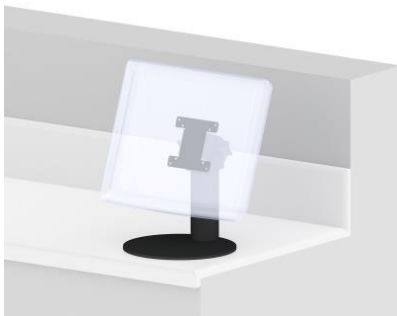
[Shelf Edge Mounts for Screens](#)



[Shelf Edge Mounts for POS Printers](#)



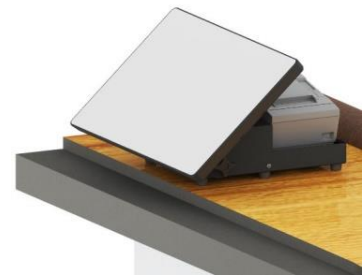
[Shelf Edge Mounts for Screens and POS Printers](#)



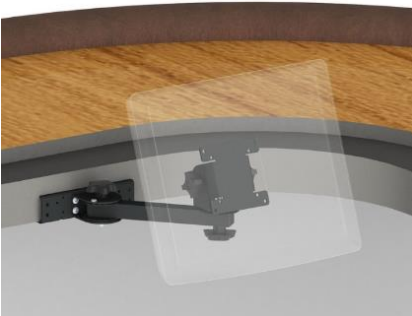
[Counter Top Mounts for Screens](#)



[Counter Top Mounts for POS Printers](#)



[Counter Top Mounts for Screens and POS Printers](#)



[Under Counter Mounts for Screens](#)



[Under Counter Mounts for POS Printers](#)



[Under Counter Mounts for Screens and POS Printers](#)

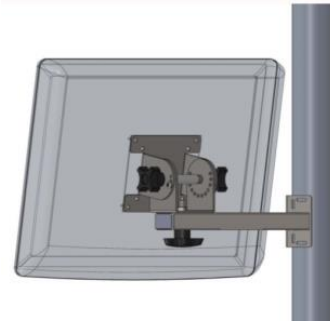
Interactive Catalog of Product Sub Groups

There are many individual products included in the various product sub groups featured on these pages.

Click on the images or descriptions to visit the individual product sub group pages on our website.

For Information about individual products; click on the "Product Attachments" tab on each of the individual product pages.

[Practical Quality Systems Home Page](#)



[Pole Mounts for Screens](#)



[Pole Mounts for POS Printers](#)



[Ceiling Mounts for Screens](#)



[Oracle MICROS Mounting Systems](#)



[NCR Aloha KDS Mounting Solutions](#)



[QSR KDS Mounting Solutions](#)



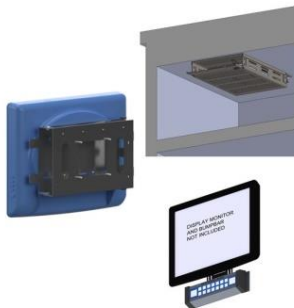
[Logic Controls Bematech KDS Mounting Solutions](#)



[Universal Kitchen Display System Mounting Packages](#)



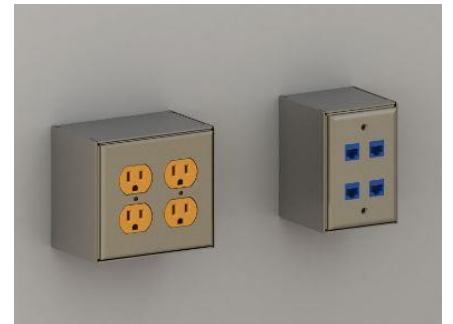
[Enclosures for Touchscreen, Monitors and Thin Clients](#)



[Back Of Screen VESA Mounts for Controllers, Thin Clients, Bump Bars, Tap+ Touch + EMV Readers](#)



[Stainless Steel Wireways](#)



[Stainless Steel Power and Data Outlet Monuments](#)

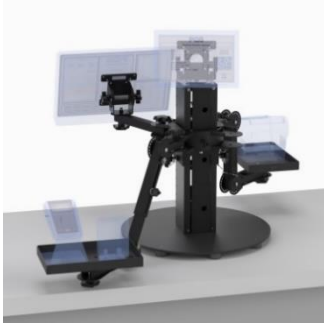
Interactive Catalog of Product Sub Groups

There are many individual products included in the various product sub groups featured on these pages.

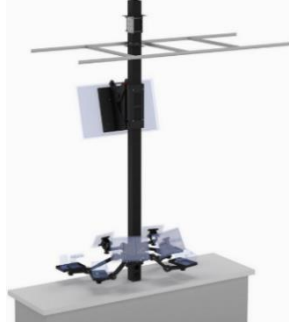
Click on the images or descriptions to visit the individual product sub group pages on our website.

For Information about individual products; click on the "Product Attachments" tab on each of the individual product pages.

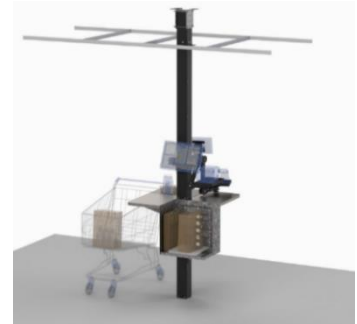
[Practical Quality Systems Home Page](#)



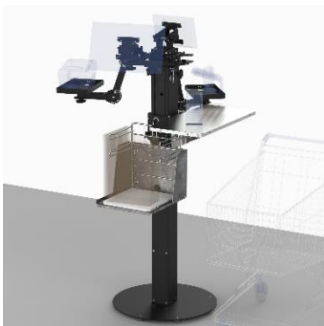
[Movable Countertop POS Stands](#)



[Direct Mount Countertop POS Stands](#)



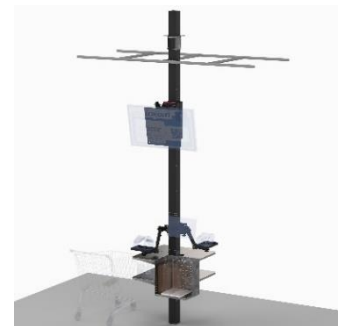
[POS Cashier Pole Stands](#)



[POS Cashier Floor Stands](#)



[POS Self-Check Out Kiosk Floor Stands](#)



[POS Self- Check Out Kiosk Pole Stands](#)



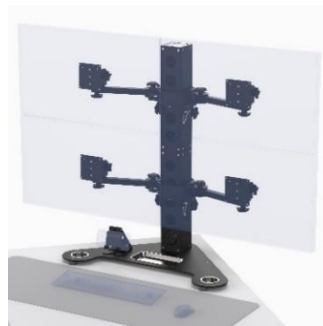
[Take Out Pickup Pole Stands](#)



[Take Out Pickup Floor Stands](#)



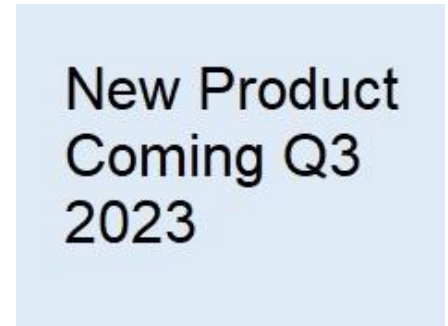
[Information Kiosk Floor Stands](#)



[Desktop Multi-Screen Pedestal Stands](#)



[4X4 Pole Clamp on Mounts](#)



[Mobile Cashier Stands](#)

Interactive Catalog of Product Sub Groups

There are many individual products included in the various product sub groups featured on these pages.

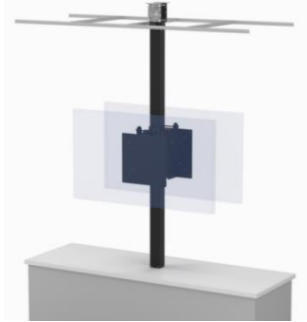
Click on the images or descriptions to visit the individual product sub group pages on our website.

For Information about individual products; click on the "Product Attachments" tab on each of the individual product pages.

[Practical Quality Systems Home Page](#)

New Product
Coming Q3
2023

Mobile Self-Check Out Stands



[Digital Signage Pole Stands](#)

New Product
Coming Q3
2023

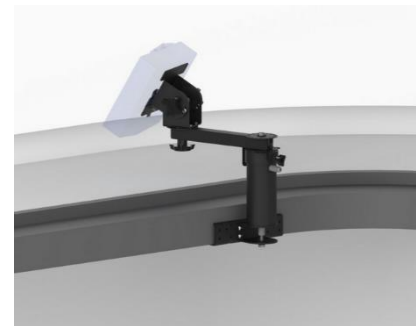
Stationary Podiums

New Product
Coming Q3
2023

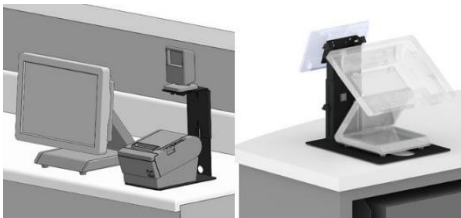
Stationary Podiums with Ceiling Feed Pole

New Product
Coming Q3
2023

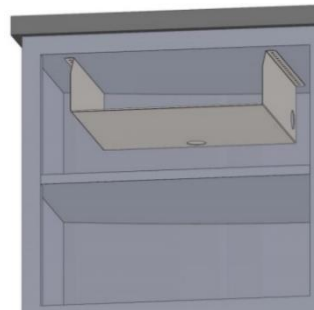
Mobile Podiums



[Ingenico Lane Reader Mounting Systems](#)



[Other Counter Top Mounts](#)



[Cash Drawer Mounting Solutions](#)